



InnoTrans 2024

24 – 27 SEPTEMBER · BERLIN

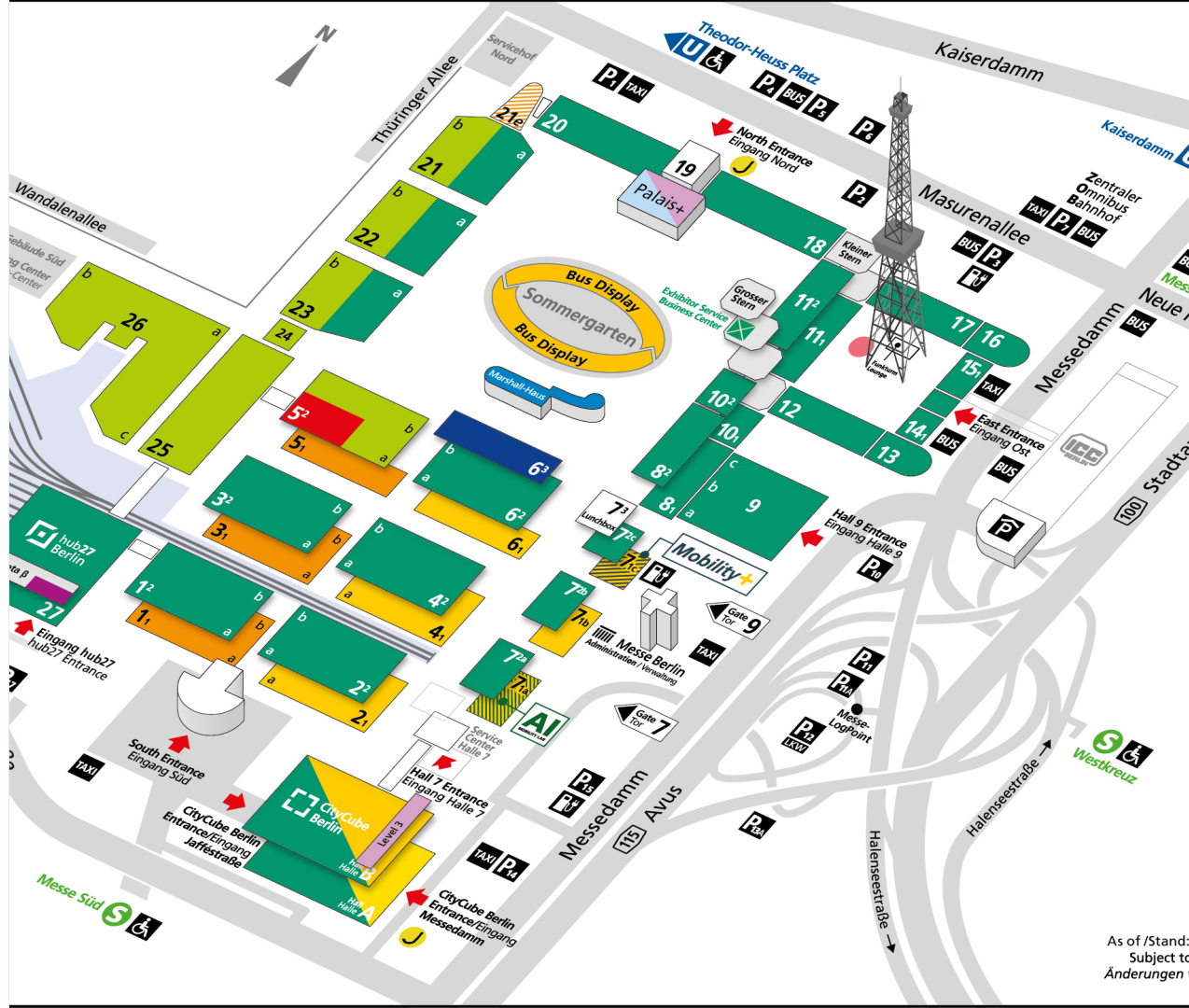
International Trade Fair for Transport Technology

ADVERTISING PORTFOLIO FOR EXHIBITORS

Various and attractive advertising options from on-site to online advertising to highlight your innovative products and your location at InnoTrans 2024 – lead the visitors to you – to the future of mobility!

BERLIN EXPOCENTER CITY PRELIMINARY HALL LAYOUT FOR 2024

- Railway Technology
- Interiors incl. Travel Catering & Comfort Services
- Railway Infrastructure
- Tunnel Construction
- Public Transport ind.
- Mobility+
- AI Mobility Lab
- Outdoor Display
Gleis- und Freigelände
- Bus Display
- InnoTrans Campus
- Opening Ceremony
Eröffnungsveranstaltung
- InnoTrans Convention
- Speakers' Corner
- Business Lounge
(Marshall-Haus)
- Press Center
Pressezentrum
- FoodCourt
- Jelbi hub shared mobility
Pickup & Drop-off for rental
two-wheeled vehicles
Mobilitätsflächen für
Miet-Zweiräder



OUR PORTFOLIO IS MULTIFACETED



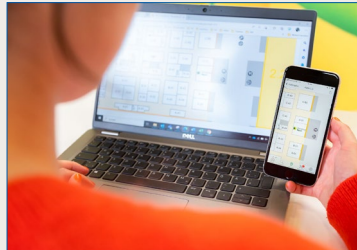
BRANDING



SPONSORING



ON-SITE ADVERTISING



ONLINE ADVERTISING



OUT-OF-HOME ADVERTISING

TABLE OF CONTENTS

ADVERTISING OPPORTUNITIES / LOCATIONS	PAGE
<u>BRANDING AND SPONSORING</u>	<u>5</u>
<u>ENTRANCE NORTH</u>	<u>9</u>
<u>ENTRANCE SOUTH SURROUNDINGS</u>	<u>19</u>
<u>ENTRANCE SOUTH</u>	<u>24</u>
<u>ENTRANCE EAST</u>	<u>41</u>
<u>MESSEDAMM HIGH TRAFFIC AREA</u>	<u>44</u>
<u>hub27</u>	<u>50</u>
<u>CityCube BERLIN</u>	<u>62</u>
<u>SPECIFIC HALL AREAS</u>	<u>84</u>
<u>ADVERTISING SPECIALS</u>	<u>114</u>
<u>OUTDOOR DISPLAY AREA</u>	<u>124</u>
<u>ONLINE ADVERTISING</u>	<u>127</u>
<u>OUT-OF-HOME ADVERTISING</u>	<u>129</u>
<u>TEAM / CONTACT</u>	<u>136</u>

BRANDING AND SPONSORING



BRANDING



Branding of 30,000 InnoTrans City Maps

- Description** 30,000 paper city maps (higher print run on demand) illustrating the Berlin ExpoCenter City and shuttle lines, the Berlin transit network map as well as a Berlin city map which will be provided at the info counters on the exhibition site and at various hotels in Berlin
- front side upper part:** half page advertisement 4c (see red mark on the left picture)
- front side lower part:** corporate logo with indication of the hall

Sizes (w x h) half page advertisement: 210.00 x 148.00 mm plus 3 mm bleed

License 26,060.00 EUR incl. printing, delivery and distribution costs

Status Currently reserved

Branding of Shuttle Busses on the Exhibition Site

Description up to 10 buses will shuttle exhibitors, visitors and media representatives on the exhibition site. All buses can be equipped with 2 magnetic advertising films on both sides

Size (w x h) driver's side: 4.17 m x 0.55 m
passenger's side: 2.71 m x 0.55 m

Hire Charge 3,205.00 EUR per bus with 2 magnetic films

Production/ Installation 630.00 EUR per bus with 2 magnetic films

Status Availability upon request

BRANDING



Bus Shuttle Brandings between Airport "BER", Hotels and the Exhibition Site – small package

Description 5 buses will shuttle exhibitors, visitors and media representatives between Airport "BER", Hotels and the Exhibition Site. The exhibitor benefits from a visible full-branding of the shuttle busses. General information about the shuttle and its sizes will be gladly provided on demand

Hire Charge e.g. 39,500.00 EUR for 5 fully branded buses

Production/Installation e.g. 50,500.00 EUR for 5 fully branded buses

Status Availability upon request

Bus Shuttle Brandings between Airport "BER" Hotels and the Exhibition Site – large package

Description 10 buses will shuttle exhibitors, visitors and media representatives between Airport "BER", Hotels and the Exhibition Site. The exhibitor benefits from a visible full-branding of the shuttle busses. General information about the shuttle and its sizes will be gladly provided on demand

Hire Charge e.g. 67,050.00 EUR for 10 fully branded buses

Production/Installation e.g. 87,950.00 EUR for 10 fully branded buses

Status Availability upon request

SPONSORING



Fabric Bags for Trade Visitors

Description sponsoring of 30,000 bags ed out to the trade visitors in the entrance and exit areas of the exhibition site

Sponsoring License 35,060.00 EUR

Supply and Production supply/ production and delivery of 30,000 bags by exhibitor

Status **Currently reserved**

Lanyards for Trade Visitors

Description sponsoring of 100,000 lanyards ed out to the trade visitors in combination with the tickets at the registration desks on the exhibition site

Sponsoring License 58,435.00 EUR

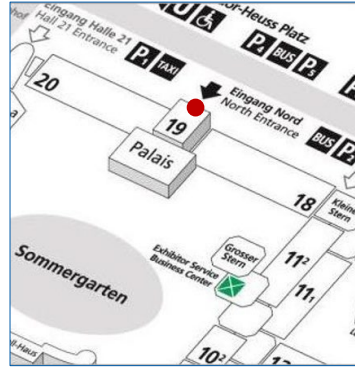
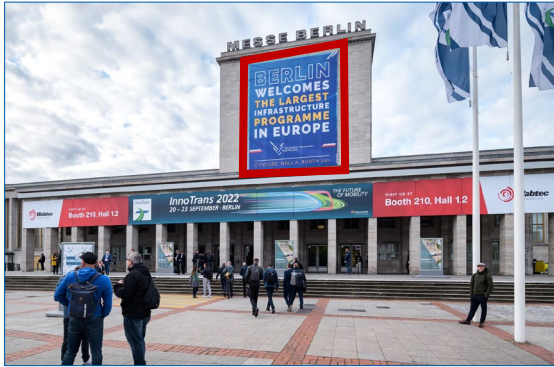
Supply and Production supply/ production and delivery of 100,000 lanyards by exhibitor

Status **Already booked**

ON-SITE ADVERTISING ENTRANCE NORTH

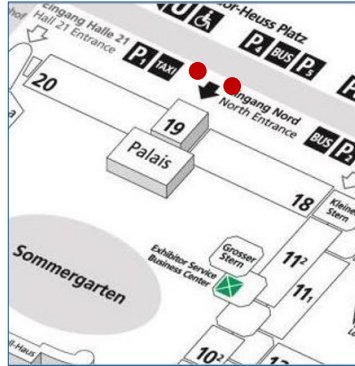


ENTRANCE NORTH – OUTDOORS



Mega-Banner at Hall 19

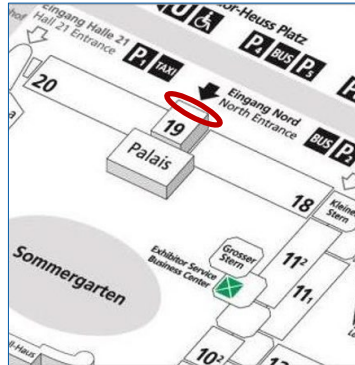
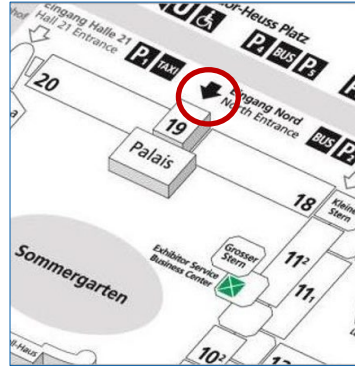
Location	directly at the facade of Hall 19 (see red mark on the left picture)
Size (w x h)	14.40 m x 17.80 m
Hire Charge	44,215.00 EUR
Production/ Installation	9,300.00 EUR
Status	Availability upon request



Bench Displays, 2-sided

Location	up to 2 bench displays at the access to Hall 19 on the left and right side (see red marks on the left map)
Size (w x h)	2.05 m x 2.05 m per side (2 sides per display)
Hire Charge	3,900.00 EUR for both displays
Production/ Installation	810.00 EUR for both displays
Status	Already booked

ENTRANCE NORTH – OUTDOORS



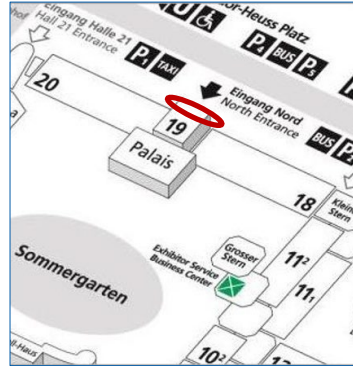
Mobile Advertising Towers at the Access, 4-sided

Location	at the access to Hall 19: exact positions by arrangement
Size (w x h)	small version: 2.302 m x 4.15 m per side (4 sides per tower) large version: 3.302 m x 6.15 m per side (4 sides per tower)
Hire Charge	small version: 11,472.00 EUR per 4-sided tower large version: 24,440.00 EUR per 4-sided tower
Production/Installation	small version: 2,970.00 EUR per 4-sided tower large version: 4,995.00 EUR per 4-sided tower
Status	Availability upon request

Entrance Signs in front of Hall 19

Location	2 entrance signs on the left and right sides above the entrance doors to Hall 19: co-branding InnoTrans and exhibitor advertising (see red marks on the left picture)
Size (w x h)	total area: 45.00 m x 2.50 m, thereof: 1 sign with 21.00 m x 2.50 m for InnoTrans advertising (middle part) 2 signs with 12.00 m x 2.50 m each for exhibitor advertising (left and right part)
Hire Charge	15,075.00 EUR for both signs
Production/Installation	3,190.00 EUR for both signs
Status	Availability upon request

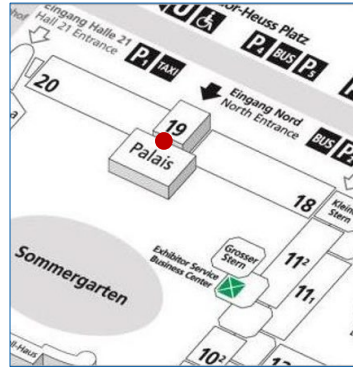
ENTRANCE NORTH – OUTDOORS



Columns Brandings in front of Hall 19, 4-sided

Location	up to 16 column brandings directly in front of the entrance doors to Hall 19 (see red mark on the left picture)
Size (w x h)	approx. 0.70 m x 4.00 m x 1.00 m per side (4 sides per column)
Hire Charge	21,820.00 EUR for all 16 brandings
Production/ Installation	37,075.00 EUR for all 16 brandings
Status	Availability upon request

ENTRANCE NORTH – OUTDOORS



Mega-Banner at Hall 19 facing the Summer Garden

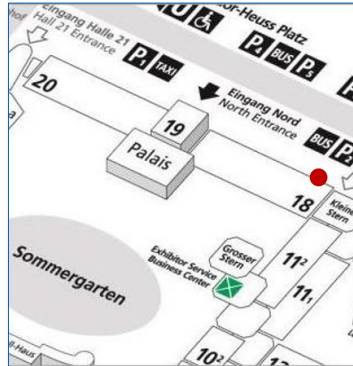
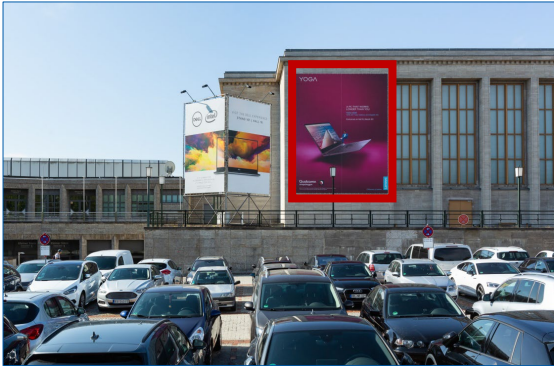
Location at the southern facade of Hall 19 facing Summer Garden

Size (w x h) 18.00 m x 12.60 m

Hire Charge 23,520.00 EUR

Production/
Installation 8,725.00 EUR

Status **Already booked**



Mega-Banner at Hall 18

Location at the facade of Hall 18
(see red mark on the left picture)

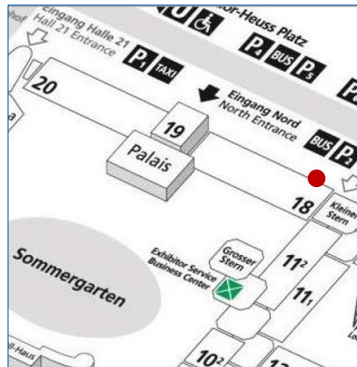
Size (w x h) 8.58 m x 11.20 m

Hire Charge 16,910.00 EUR

Production/
Installation 4,410.00 EUR

Status **Availability upon request**

ENTRANCE NORTH – OUTDOORS



Advertising Tower in front of Hall 18, 2-sided

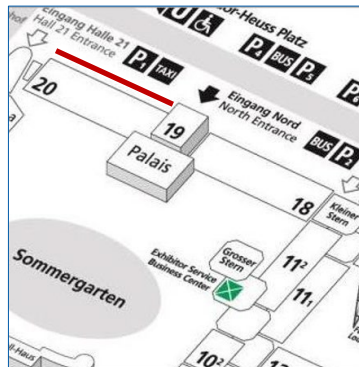
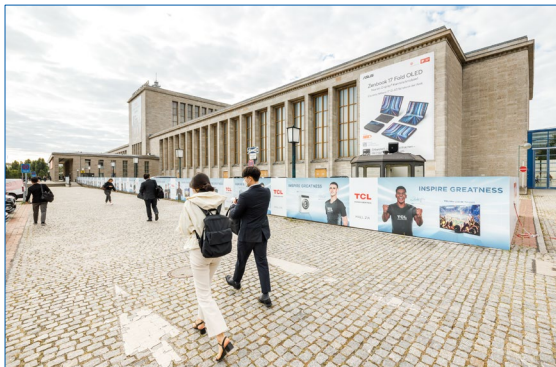
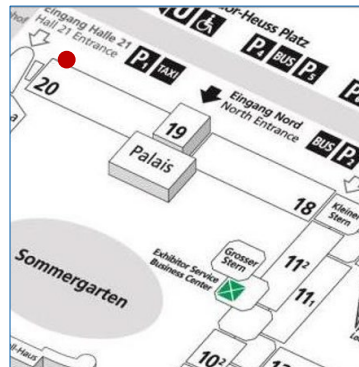
Location	in front of Hall 18 (see red mark on the left picture)
Size (w x h)	3.70 m x 5.75 m per banner (2 banners in total)
Hire Charge	6,115.00 EUR for both banners
Production/ Installation	2,200.00 EUR for both banners
Status	Availability upon request



Gallery Branding in front of Hall 18

Location	at the balustrades in front of Hall 18
Size (w x h)	max. 88.77 m x 1.50 m for 3 branding areas: branding area 1: 6.41 m x 1.50 m branding area 2: 78,13 m x 1.50 m branding area 3: 4,50 m x 1.50 m other formats on demand
Hire Charge	18,710.00 EUR for all 3 branding areas
Production/ Installation	19,630.00 EUR for all 3 branding areas
Status	Availability upon request

ENTRANCE NORTH – OUTDOORS



Mega-Banner at Hall 20

Location at the facade of Hall 20
(see red mark on the left picture)

Size (w x h) 8.58 m x 11.20 m

Hire Charge 16,910.00 EUR

Production/Installation 4,410.00 EUR

Status Availability upon request

Gallery Branding in front of Hall 20

Location at the balustrade in front of Hall 20

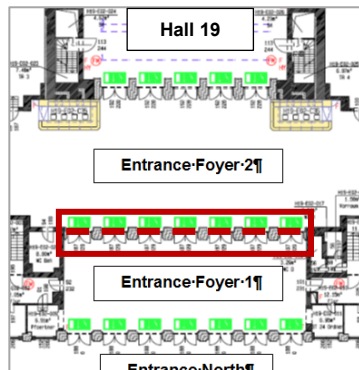
Size (w x h) max. 100.997 m x 1.50 m for 3 branding areas:
branding area 1: 11.206 m x 1.50 m
branding area 2: 83.441 m x 1.50 m
branding area 3: 6.35 m x 1.50 m
smaller formats on demand

Hire Charge 21,290.00 EUR for all 3 branding areas

Production/Installation 19,140.00 EUR for all 3 branding areas

Status Availability upon request

ENTRANCE NORTH – INDOORS



Banners in the Entrance Foyer 1

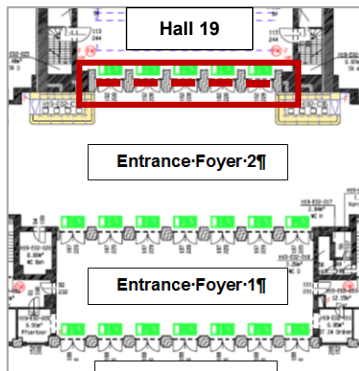
Location up to 7 banners in the Entrance Foyer 1 at the access to Hall 19 above the entrance doors to Entrance Foyer 2 (see red marks on the left map)

Size (w x h) 2.20 m x 3.40 m per banner

Hire Charge 16,500.00 EUR for 7 banners

Production/ Installation 5,425.00 EUR for 7 banners

Status Availability upon request



Banners in the Entrance Foyer 2

Location up to 5 banners in the Entrance Foyer 2 at the access to Hall 19 above the entrance doors to Hall 19 (see red marks on the left map)

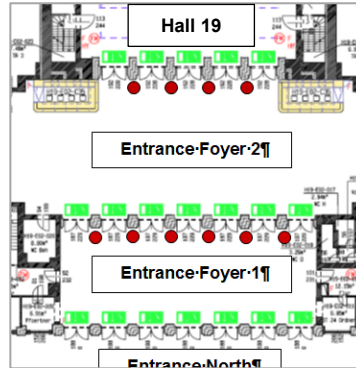
Size (w x h) 2.20 m x 2.90 m per banner

Hire Charge 10,055.00 EUR for 5 banners

Production/ Installation 3,370.00 EUR for 5 banners

Status Availability upon request

ENTRANCE NORTH – INDOORS



Column Brandings in the Entrance Foyers to Hall 19

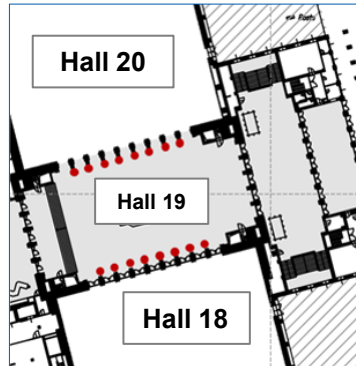
Location up to 10 column brandings between the doors
 - 6 column brandings in the Entrance Foyer 1
 - 4 column brandings in the Entrance Foyer 2
 (see red marks on the left map)

Size (w x h) 0.50 m x 2.28 m per column branding

Hire Charge 1,235.00 EUR per column branding

Production/ Installation 155.00 EUR per column branding

Status Currently reserved



Column Brandings in Hall 19

Location Up to 16 column brandings between the doors
 - 8 column brandings at the access to Hall 18
 - 8 column brandings at the access to Hall 20
 (see red marks on the left map)

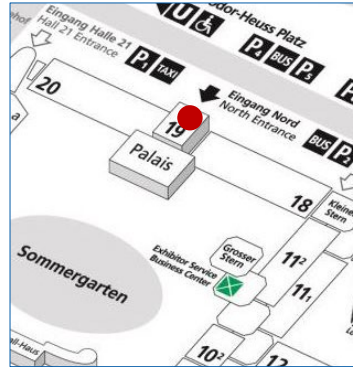
Size (w x h) 0.45 m x 2.49 m per column branding

Hire Charge 1,235.00 EUR per column branding

Production/ Installation 155.00 EUR per column branding

Status Availability upon request

ENTRANCE NORTH – INDOORS



OPTION A: Mega-Banner in Hall 19, 2-sided

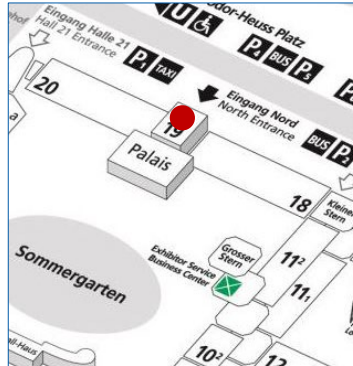
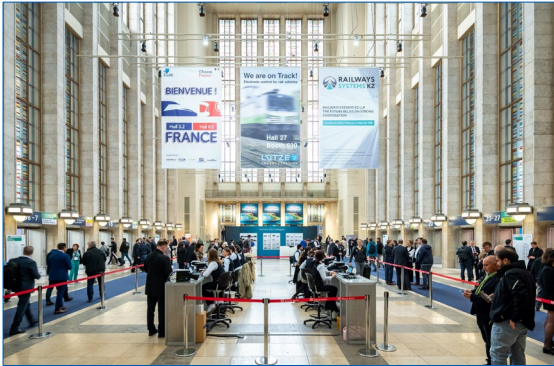
Location hanging mega-banner directly in Hall 19

Size (w x h) 16.00 x 4.70 per side (2 sides per banner)

Hire Charge 52,715.00 EUR

Production/ Installation 5,850.00 EUR

Status Not available



OPTION B: Mega-Banners in Hall 19, 2-sided

Location up to 5 hanging mega-banners directly in Hall 19

Size (w x h) 3.00 m x 5.00 m per side (2 sides per banner)

Hire Charge 10,515.00 EUR per double-sided banner

Production/ Installation 705.00 EUR per double-sided banner

Status Availability upon request. 1 Banner is already booked. 2 Banners are reserved

ON-SITE ADVERTISING ENTRANCE SOUTH SURROUNDINGS



ENTRANCE SOUTH – SURROUNDINGS



Advertising Tower at the Access to the Parking Areas, 4-sided

Location	at the access to the parking areas of Entrance South at Jafféstraße – the tower is equipped with 4 banners
Size (w x h)	east side (Entrance South) & west side (main road): 8.75 m x 8.11 m per banner north side (car park) & south side (main road): 5.75 m x 8.11 m per banner
Hire Charge	east side & west side: 14,290.00 EUR per banner north side: 9,390.00 EUR; south side: 11,740.00 EUR
Production/ Installation	east side & west side: 4,015.00 EUR per banner north side & south side: 2,665.00 EUR per banner
Status	Availability upon request. The East and South sides are already booked.

Advertising Tower at Gates 25/hub27, 2-sided

Location	at the access to Gates 25/hub27 at Jafféstraße
Size (w x h)	3.94 m x 9.25 m per side (2 sides in total)
Hire Charge	10,890.00 EUR for both sides
Production/ Installation	3,805.00 EUR for both sides.
Status	Availability upon request

ENTRANCE SOUTH – SURROUNDINGS



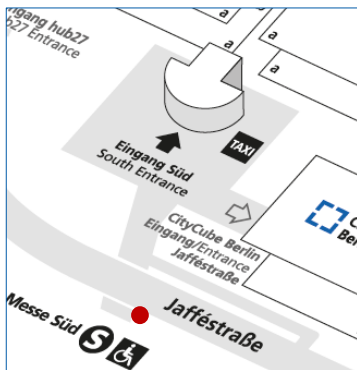
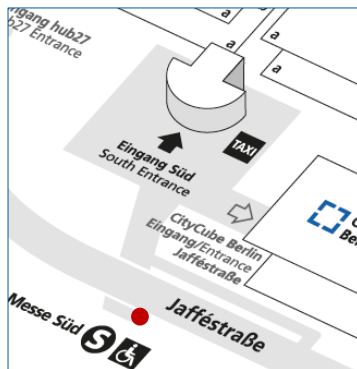
Flags between the Parking Areas and Gates 25/hub27

Location	up to 11 flags at Jaffestraße between the parking areas of Entrance South and the access to Gates 25/hub27
Size (w x h)	1.50 m x 4.00 m per flag
Hire Charge	325.00 EUR per flag
Production/Installation	145.00 EUR to 255.00 EUR depending on layout, quantity and finishing of the flags
Status	Availability upon request

Outer Bridge Branding at the Pedestrian Access

Location	outer branding at the bridge connecting the urban railway station "Messe Süd" with the pedestrian access to Entrance South
Size (w x h)	15.00 m x 1.60 m
Hire Charge	8,755.00 EUR
Production/Installation	1,330.00 EUR
Status	Availability upon request

ENTRANCE SOUTH – SURROUNDINGS



Step Graphics at the Stairs at the Pedestrian Access

Location stairs leading to the bridge connecting the urban railway station "Messe Süd" with the pedestrian access to Entrance South:
every step will be equipped with an adhesive foil

Size (w x h) 3.60 m x 0.14 m per step (4 segments with 66 steps in total)

Hire Charge 13,820.00 EUR for 66 step graphics

Production/ Installation 3,565.00 EUR for 66 steps graphics

Status Availability upon request

Light Pole Brandings at the Pedestrian Access, 1-sided

Location up to 38 brandings at the light poles on the left and right sides of the bridge connecting the urban railway station "Messe Süd" with the pedestrian access to Entrance South and up to 8 brandings on the light poles at the side access

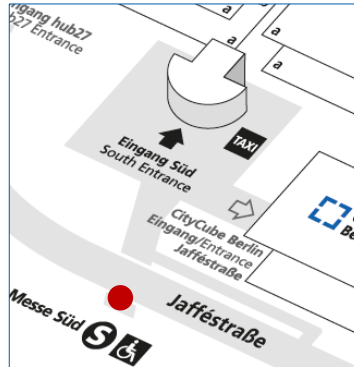
Size (w x h) e.g. 0.50 m x 1.35 m per branding, 1-sided
other sizes and special formats on demand

Hire Charge e.g. 29,415.00 EUR for 46 brandings, each 1-sided

Production/ Installation e.g. 4,840.00 EUR for 46 brandings, each 1-sided

Status Availability upon request

ENTRANCE SOUTH – SURROUNDINGS



Inner Balustrade Brandings at the Pedestrian Access

Location	up to 3 brandings at the inner balustrades that lead to the bridge connecting the urban railway station "Messe Süd" with the pedestrian access to Entrance South
Size (w x h)	3.12 m x 0.53 m per banner (3 banners in total)
Hire Charge	2,430.00 EUR for 3 banners
Production/Installation	415.00 EUR for 3 banners
Status	Currently reserved

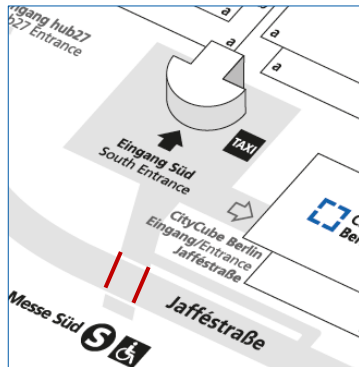
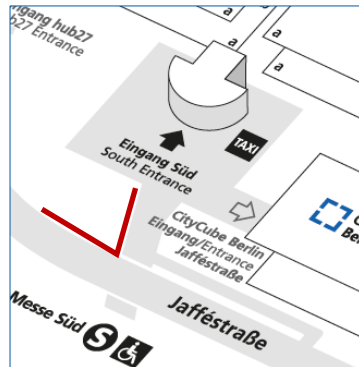
Inner Bridge Brandings at the Pedestrian Access

Location	up to 2 brandings at the inner left and right sides of the bridge connecting the urban railway station "Messe Süd" with the pedestrian access to Entrance South
Size (w x h)	24.85 m x 0.80 m per banner (2 banners in total)
Hire Charge	14,626.00 EUR for 2 banners
Production/Installation	2,380.00 EUR for 2 banners
Status	Availability upon request

ON-SITE ADVERTISING ENTRANCE SOUTH



ENTRANCE SOUTH – OUTDOORS



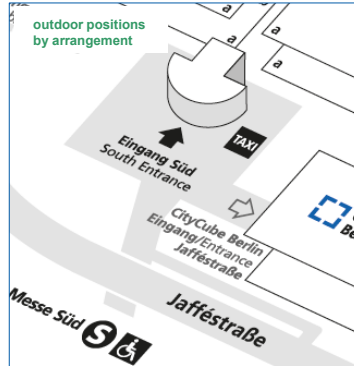
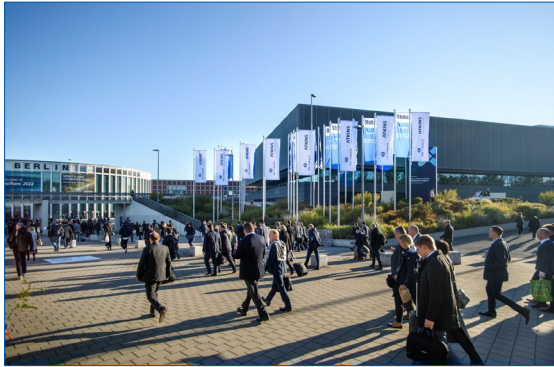
Flags along the Main Road and at the Pedestrian and Taxi Access

Location	21 [out of max. 82] flags between Jaffestraße and Entrance South as well as at the pedestrian and taxi access to Entrance South
Size (w x h)	1.50 m x 4.00 m per flag
Hire Charge	325.00 EUR per flag
Production/ Installation	145.00 EUR to 255.00 EUR per flag depending on layout, quantity and finishing of the flags
Status	Availability upon request. Many positions currently reserved

Tunnel Branding at the Pedestrian and Taxi Access, 2-sided

Location	branding of the walls along the pedestrian tunnel between the urban railway station "Messe Süd" and Entrance South
Size (w x h)	left side: 20.49 m x 2.30 m right side: 20.49 m x 2.30 m
Hire Charge	20,835.00 EUR for both sides
Production/ Installation	5,785.00 EUR for both sides
Status	Availability upon request

ENTRANCE SOUTH – OUTDOORS



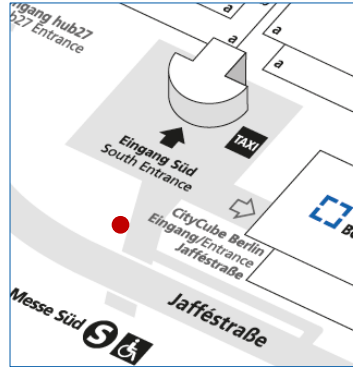
Flags the Pedestrian and Taxi Access to Entrance South

Location	up to 30 flags between the CityCube Berlin and Entrance South as well as at the pedestrian and taxi access to Entrance South (with or without banner arm)
Size (w x h)	1.50 m x 4.00 m per flag
Hire Charge	325.00 EUR per flag
Production/ Installation	145.00 EUR per flag as an outrigger-flag
Status	Availability upon request. Many positions currently reserved

Floor Graphics at the Pedestrian and Taxi Access

Location	on the pedestrian and next to the taxi access to Entrance South: exact positions by arrangement
Size (w x h)	e.g. 2.40 x 2.40 per squared floor graphic other sizes and formats on demand
Hire Charge	2,230.00 EUR per squared floor graphic
Production/ Installation	670.00 Euro per squared floor graphic
Status	Availability upon request

ENTRANCE SOUTH – OUTDOORS



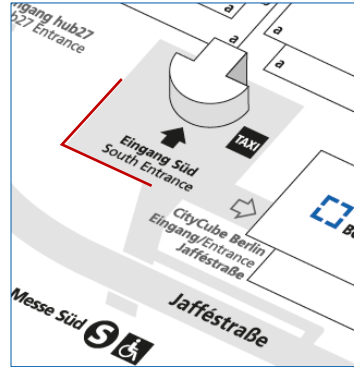
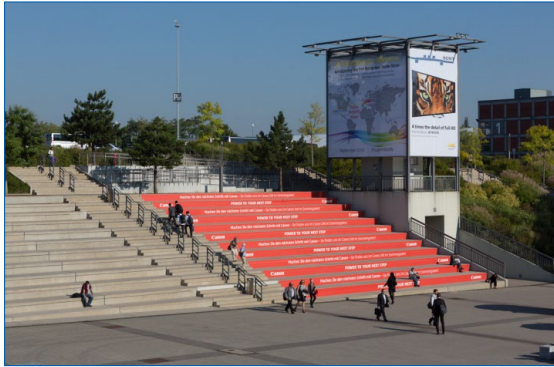
Advertising Plates at the Pedestrian and Taxi Access

Location	up to 3 banners on the advertising plates at the pedestrian and taxi access to Entrance South
Size (w x h)	3.50 m x 6.70 m per banner
Hire Charge	(1) 7,630.00 EUR for 1 banner (2) 21,730.00 EUR for 3 banners
Production/Installation	(1) 2,330.00 EUR for 1 banner (2) 5,830.00 EUR for 3 banners
Status	Availability upon request. One plate is already booked

Bridge Branding at the Pedestrian and Taxi Access

Location	2 banners at the balustrades and 1 branding of the exterior left wall of the bridge at the pedestrian and taxi access to Entrance South (see red marks on the left picture)
Size (w x h)	balustrades: 23.10 m x 0.90 m per banner wall branding: banner in trapezium shape: min. 76.00 m ²
Hire Charge	18,688.00 EUR in total
Production/Installation	6,245.00 EUR in total
Status	Availability upon request

ENTRANCE SOUTH – OUTDOORS



Stair Brandings at the Plaza

Location	5 stair segments directly at the plaza of Entrance South, each segment has 11 to 12 steps: every step will be equipped with an adhesive foil
Size (w x h)	approx. 17,83 m x 0,47 m per step graphic other sizes and formats on demand
Hire Charge	23,840.00 EUR per stair segment, i.e. for 11 to 12 step graphics
Production/ Installation	5,025.00 EUR per stair segment, i.e. for 11 to 12 step graphics
Status	Availability upon request

ENTRANCE SOUTH – OUTDOORS



Advertising Tower at the Plaza on the left side, 4-sided

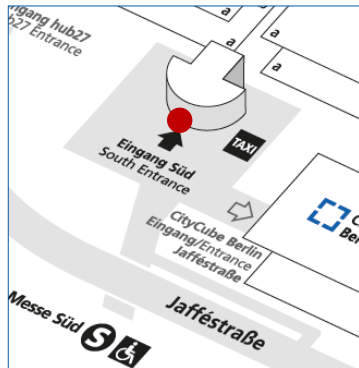
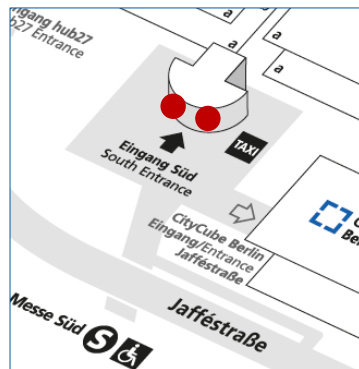
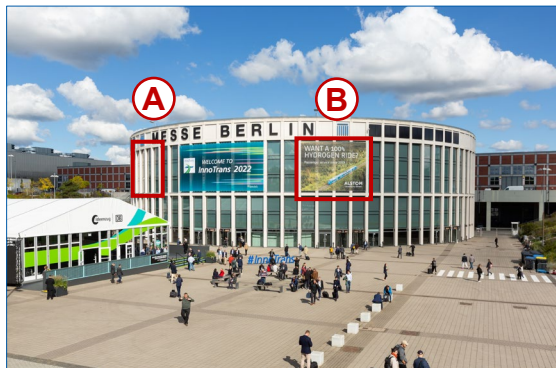
Location	on the left side of the plaza of Entrance South - the tower is equipped with 4 banners	
Size (w x h)	south side (plaza) & north side (Hall 1.2): 8.75 m x 8.11 m per banner east side (plaza) & west side (hub27): 5.75 m x 8.11 m per banner	
Hire Charge	south side (plaza): 14,288.00 EUR; west side(hub27): 6,575.00 EUR;	east side (plaza): 9,390.00 EUR north side (Hall 1.2): 7,140.00 EUR
Production/ Installation	south side & north side: 4,015.00 EUR per banner east side & west side: 2,665.00 EUR per banner	

Status Availability upon request

Mega-Banner at the Facade of Hall 2.2

Location	at the facade of Hall 2.2 towards the plaza of Entrance South
Size (w x h)	e.g. 23.50 m x 8.50 m other sizes and formats on demand
Hire Charge	e.g. 21,609.00 EUR
Production/ Installation	e.g. 14,895.00 EUR
Status	Availability upon request

ENTRANCE SOUTH – OUTDOORS



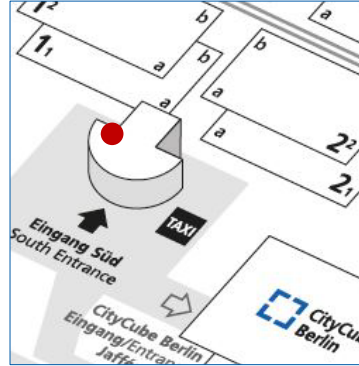
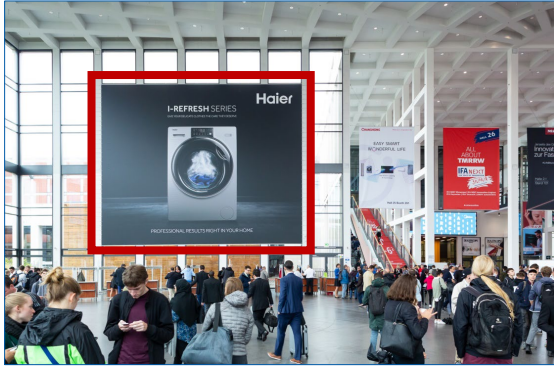
Lateral Window Brandings at the Entrance Hall

Location	up to two banners at the windows of the Entrance Hall (see red marks [A & B] on the left picture)
Size (w x h)	10.80 m x 7.95 m per banner
Hire Charge	19,775.00 EUR per banner
Production/Installation	4,860.00 EUR per banner
Status	Position A is available. Position B is already booked

Door Brandings at the Entrance Hall (outdoor and indoor)

Location	up to 20 door brandings directly above the revolving doors of the Entrance Hall: - 10 brandings can be installed above 10 revolving outer doors - 10 brandings can be installed above 10 revolving inner doors
Size (w x h)	2.35 m x 0.485 m per outer branding 1.76 m x 0.435 m per inner branding
Hire Charge	12,920.00 EUR for all 20 brandings
Production/Installation	1,585.00 EUR for all 20 brandings
Status	Currently reserved

ENTRANCE SOUTH – INDOORS



Option A: Window Branding in the Entrance Hall on the Left Side

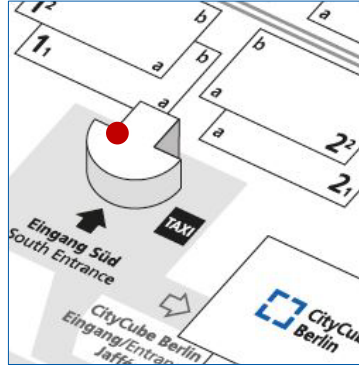
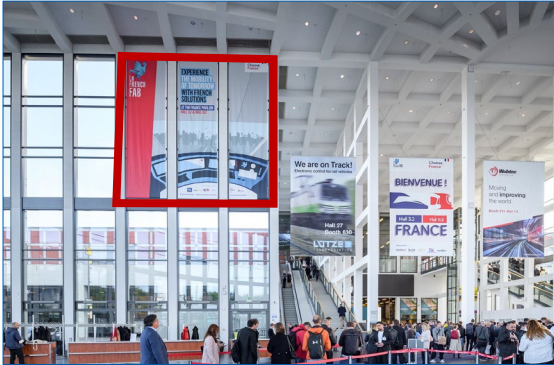
Location in the Entrance Hall on the left side
(see red mark on the left picture)

Size (w x h) 14.50 m x 11.70 m

Hire Charge 40,257.00 EUR

Production/ Installation 10,270.00 EUR

Status Currently reserved



Option B: Window Brandings in the Entrance Hall on the Left Side

Location up to 8 window banners in the Entrance Hall on the left side:
a minimum of 3 banners have to be booked
(see red mark on the left picture)

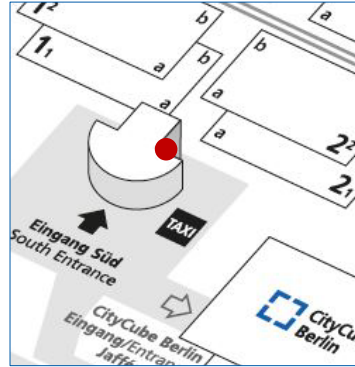
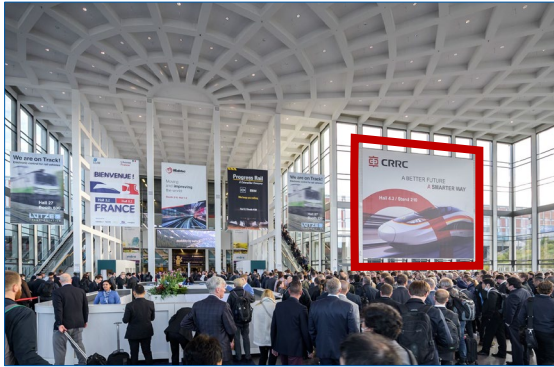
Size (w x h) 2.33 m x 8.25 m per banner

Hire Charge 13,665.00 EUR for 3 window banners

Production/ Installation 4,365.00 EUR for 3 window banners

Status Currently reserved

ENTRANCE SOUTH – INDOORS



Option A: Window Branding in the Entrance Hall on the Right Side

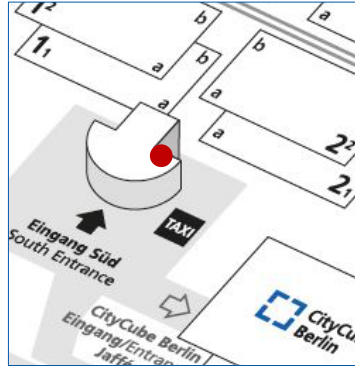
Location in the Entrance Hall on the right side
(see red mark on the left picture)

Size (w x h) 14.50 m x 11.70 m

Hire Charge 40,257.00 EUR

Production/ Installation 10,270.00 EUR

Status Availability upon request



Option B: Window Brandings in the Entrance Hall on the Right Side

Location up to 8 window banners in the Entrance Hall on the right side:
a minimum of 3 banners have to be booked
(see red mark on the left picture)

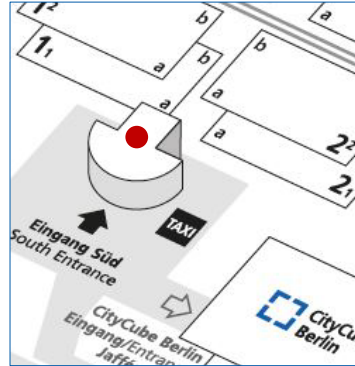
Size (w x h) 2.33 m x 8.25 m per banner

Hire Charge 13,665.00 EUR for 3 window banners

Production/ Installation 4,365.00 EUR for 3 window banners

Status Availability upon request

ENTRANCE SOUTH – INDOORS



Hanging Mega-Banners in the Entrance Hall, 2-sided

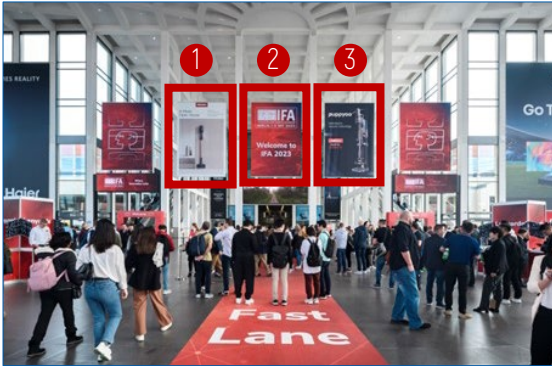
Location up to 3 hanging mega-banners in the Entrance Hall South

Size (w x h) 4.00 m x 6.00 m per side (2 sides per banner)

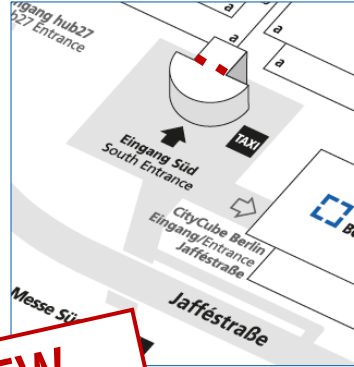
Hire Charge 6,910.00 EUR per double-sided banner

Production/ Installation 2,875.00 EUR per double-sided banner

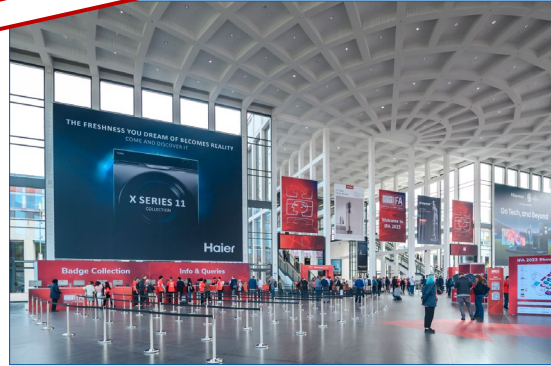
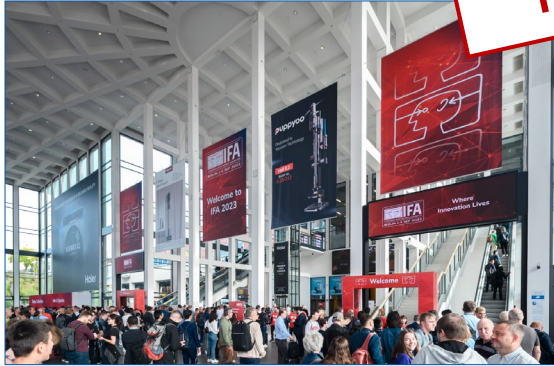
Status All banners are already booked



ENTRANCE SOUTH – INDOORS



NEW



LED Displays with Banners above the Escalators

Location 2 combi-packages are available. Each package consists of 1 hanging mega-banner in combination with a new LED display in the Entrance Hall at the outer sides left and right - directly above the escalators (see red marks on the left picture)

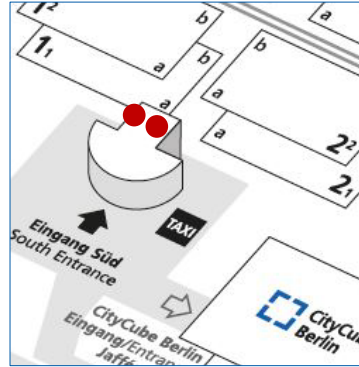
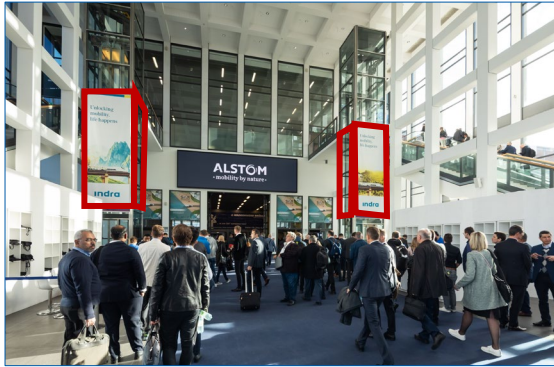
Size (w x h) hanging mega-banners: 4.00 m x 5.50 m per side (2 sides per banner)

Technical Specs LED displays, 1-sided: FULL-HD display; 2.5 mm pixel pitch; 20 Mbit; 60 fps; content 32:9
LED dimensions: 4.86 m x 1.36 m each; resolution: 3840 x 1080 pixel each

Special Combi Price 19,076.00 EUR per combi-pack including:
- 30 sec. spot within a loop with organizer content on the LED display
- hire charge, production & installation of the banner installed above

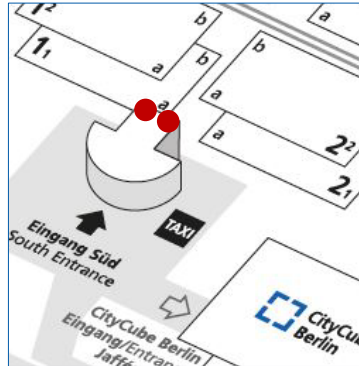
Status One combi-package is reserved. One combi-package is already booked

ENTRANCE SOUTH – INDOORS



Suspended Banners in the Entrance Hall

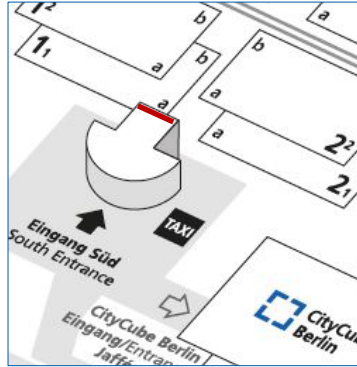
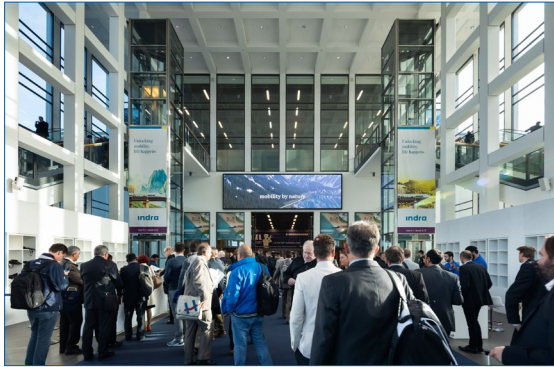
Location	up to 4 banners (2 per elevator) in the Entrance Hall in the access area to Halls 1.1 to 6.1 (see red marks on the left picture)
Size (w x h)	2.10 m x 6.00 m per banner (2 banners per elevator)
Hire Charge	6,760.00 EUR per elevator (2 banners)
Production/ Installation	1,950.00 EUR per elevator (2 banners)
Status	Currently reserved



Window Brandings in the Entrance Hall

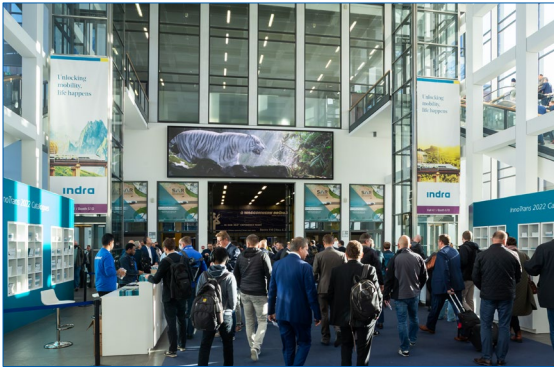
Location	up to 8 window brandings with adhesive foil in the Entrance Hall at the access to Halls 1.1 to 6.1 (see red marks on the left picture)
Size (w x h)	2.34 m x 2.35 m per window cling (8 brandings in total)
Hire Charge	8,460.00 EUR for 4 front sides 4,295.00 EUR for 4 back sides (11,485.00 EUR for all 8 brandings)
Production/ Installation	2,630.00 EUR for 4 front side brandings 2,630.00 EUR for 4 back side brandings (4,065.00 EUR for all 8 brandings)
Status	Currently reserved

ENTRANCE SOUTH – INDOORS

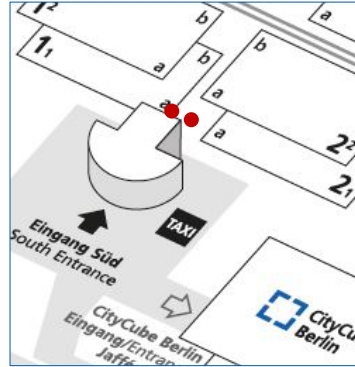
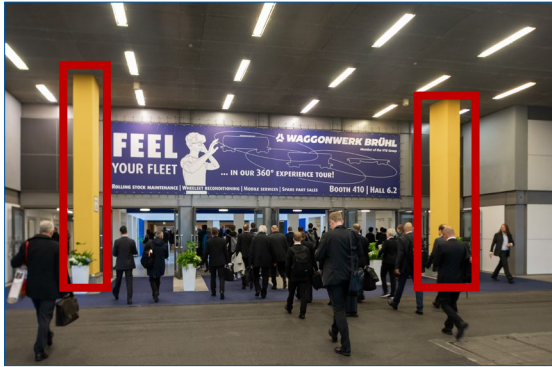


Exclusive LED Mega-Display in the Entrance Hall

Location	LED Mega-Display in the Entrance Hall at the access to Halls 1-6
Technical Specs	FULL-HD display; 2.50 mm pixel pitch; 20 Mbit; 60 fps; content 32:9 LED dimensions: 10.08 m x 2.88 m resolution: 3840 x 1080 Pixel
Hire Charge	38,220.00 EUR for an exclusive 30 sec. spot within a loop with organizer content
Status	Currently reserved



ENTRANCE SOUTH – INDOORS



Pillar Brandings leading to the Middle Foyers of Halls 1.1/2.1, 4-sided

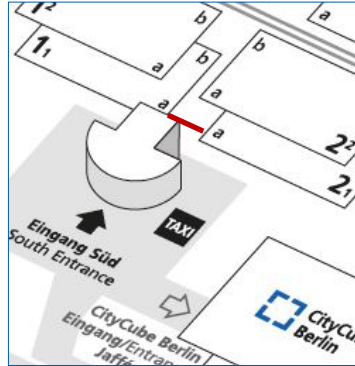
Location branding of the pillars in front of the entrance doors to the middle foyers of Halls 1.1/2.1 (see red marks on the left picture)

Size (w x h) front and back sides: 0.86 m x 6.00 m each
lateral sides: 1.32 m x 6.00 m each
(4 sides per pillar)

Hire Charge 7,825.00 EUR for both 4-sided pillar brandings

Production/ Installation on demand
(depending on technical implementation)

Status Availability upon request



Entrance Banner to the Middle Foyers of Halls 1.1/2.1

Location above the entrance doors to the middle foyers of Halls 1.1/2.1

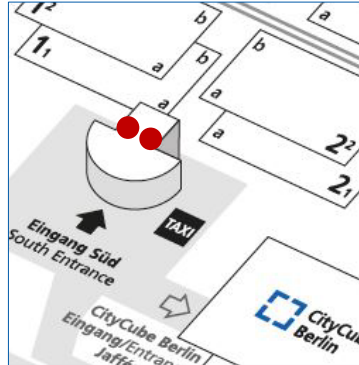
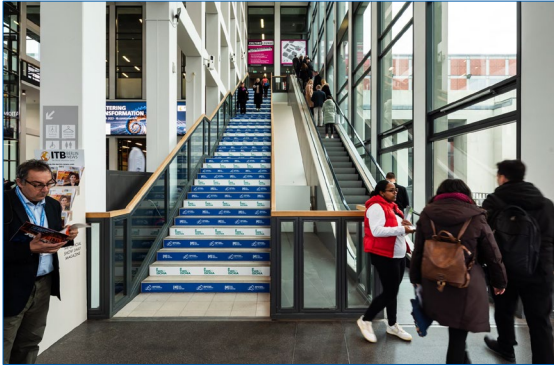
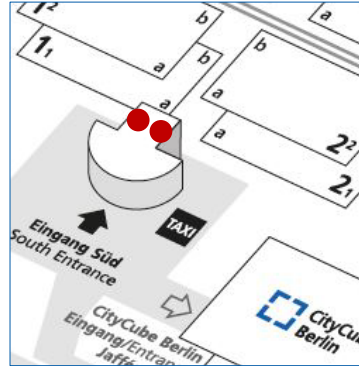
Size (w x h) 11.50 m x 2.50 m

Hire Charge 7,399.00 EUR

Production/ Installation 2,175.00 EUR

Status Currently reserved

ENTRANCE SOUTH – INDOORS



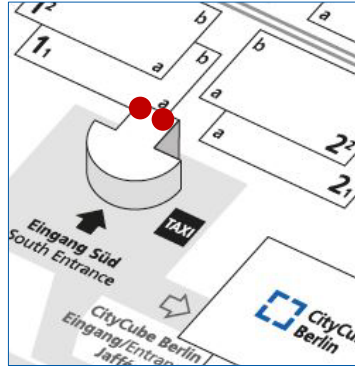
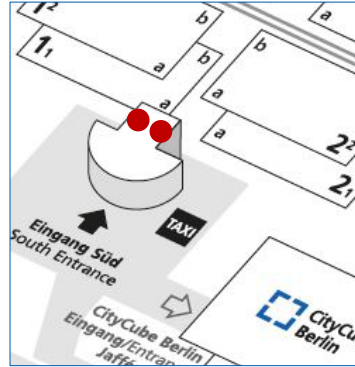
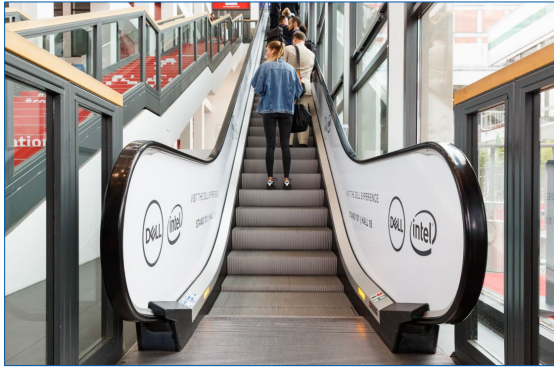
Balustrade Brandings at the Stairs in the Entrance Hall, 2-sided

Location	brandings of the balustrades at the 2 stairs in the Entrance Hall on the left and right side leading to Halls 1.2-6.2 with adhesive foil (see red marks on the left picture)
Size	the stencils will be provided on demand
Hire Charge	13,420.00 EUR for both stairs, i.e. for 4 balustrade brandings
Production/ Installation	on demand (depending on technical implementation)
Status	Availability upon request

Step Graphics at the Stairs in the Entrance Hall

Location	2 stairs in the Entrance Hall on the left and right side leading to Halls 1.2-6.2: every step will be equipped with an adhesive foil
Size (w x h)	1.83 m x 0.135 m per step graphic (60 step graphics per stair)
Hire Charge	19,185.00 EUR for both stairs, i.e. for 120 step graphics in total
Production/ Installation	2,880.00 EUR for both stairs, i.e. for 120 step graphics in total
Status	Availability upon request

ENTRANCE SOUTH – INDOORS



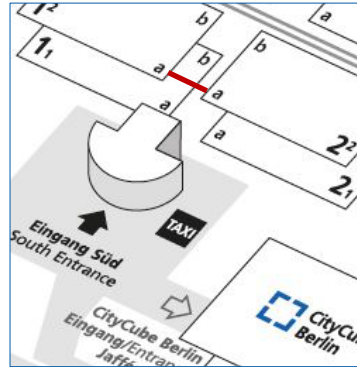
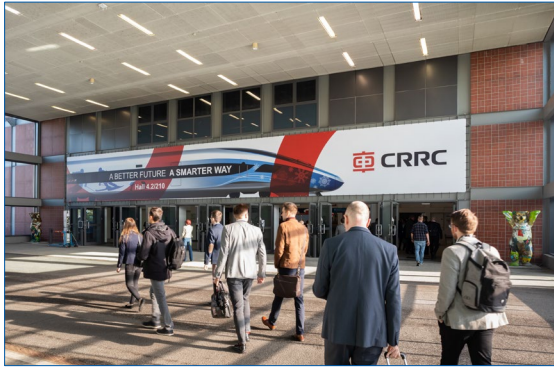
Balustrade Graphics at the Escalators in the Entrance Hall, 2-sided

Location	brandings of the balustrades at the 2 escalators in the Entrance Hall on the left and right side leading to Halls 1.2-6.2 with adhesive foil
Size	approx. 128.00 m ² for all 4 balustrade graphics (2 sides per balustrade graphic)
Hire Charge	20,996.00 EUR for both escalators, i.e. for 4 balustrade graphics in total
Production/ Installation	10,775.00 EUR for both escalators, i.e. for 4 balustrade graphic in total (each 2-sided)
Status	Availability upon request

Window Brandings in the Entrance Hall on the Upper Level

Location	up to 8 window brandings with adhesive foil at the access area to Halls 1.2 to 6.2 coming from the Entrance Hall via the escalators and stairs on the left and right side; 8 brandings can be fixed on 4 windows on the front and back sides.
Size	2.34 m x 2.35 m per window cling (8 brandings in total)
Hire Charge	8,460.00 EUR for 4 front sides 4,295.00 EUR for 4 back sides (11,485.00 EUR for all 8 brandings)
Production/ Installation	2,630.00 EUR for 4 front side brandings 2,630.00 EUR for 4 back side brandings (4,065.00 EUR for all 8 brandings)
Status	Currently reserved

ENTRANCE SOUTH – INDOORS



Option A: Entrance Banner to the Middle Foyers of Halls 1.2/2.2 – large Version

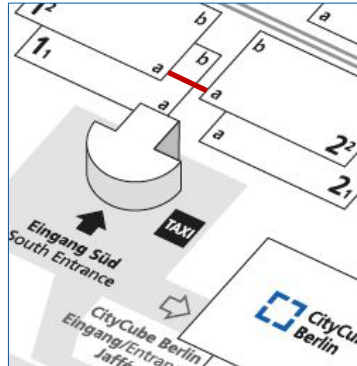
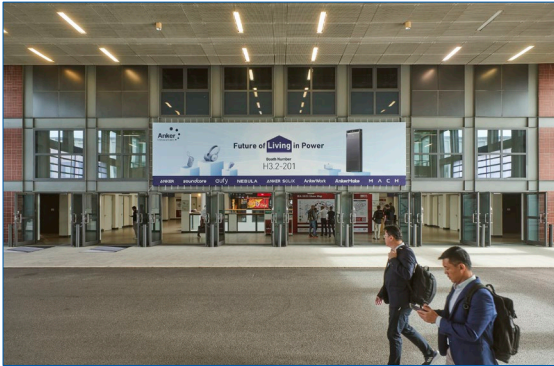
Location above the entrance doors to the middle foyers of Halls 1.2/2.2

Size 24.00 m x 3.00 m

Hire Charge 17,535.00 EUR

**Production/
Installation** 4,090.00 EUR

Status **Already booked**



Option B: 1 Entrance Banner to the Middle Foyers of Halls 1.2/2.2 – small Version

Location above the entrance doors to the middle foyers of Halls 1.2/2.2

Size 12.00 m x 3.00 m

Hire Charge 8,770.00 EUR

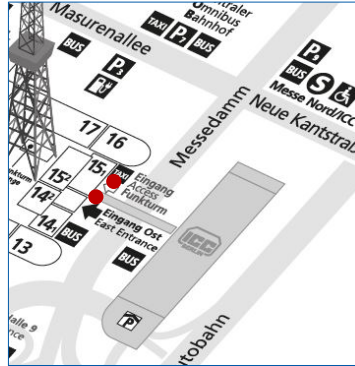
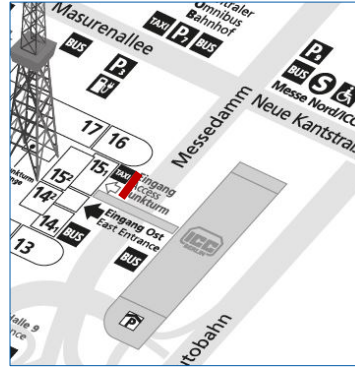
**Production/
Installation** 2,650.00 EUR

Status **Not available**

ENTRANCE EAST OUTDOOR & INDOOR ADVERTISING



ENTRANCE EAST – OUTDOORS



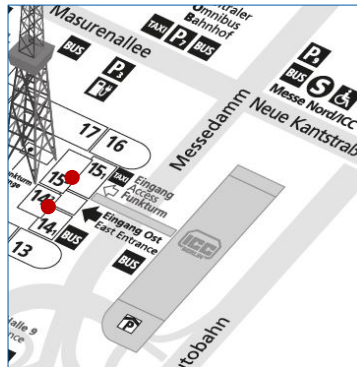
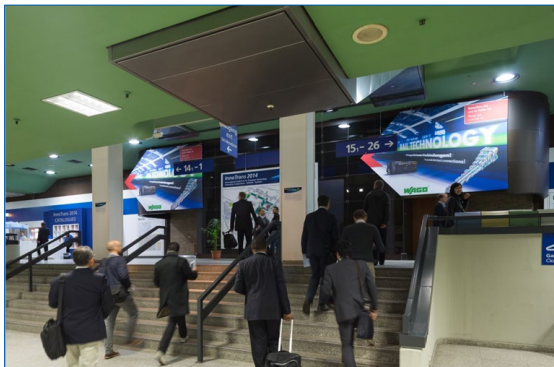
Flags at the Access

Location	up to 10 flags at the pedestrian and taxi access to Entrance East
Size (w x h)	1.50 m x 4.00 m per flag
Hire Charge	325.00 EUR per flag
Production/ Installation	145.00 EUR to 255.00 EUR per flag depending on layout, quantity and finishing of the flags
Status	Availability upon request

Entrance Signs at the Access

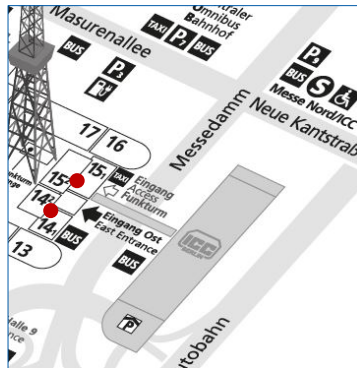
Location	up to 2 signs at the access to Entrance East one sign pointing north and one sign pointing south
Size (w x h)	3.10 m x 1.50 m per sign
Hire Charge	7,555.00 EUR for both signs
Production/ Installation	1,450.00 EUR for both signs
Status	Availability upon request

ENTRANCE EAST – INDOORS



Direction Banners in the Entrance Hall

Location	up to 2 banners in the Entrance Hall East in the form of arrows or squares leading north or south
Size (w x h)	e.g. approx. 4.69 m x 3.20 m per banner other shapes and sizes possible
Hire Charge	e.g. 7,720.00 EUR for both banners
Production/ Installation	e.g. 2,165.00 EUR for both banners
Status	Availability upon request



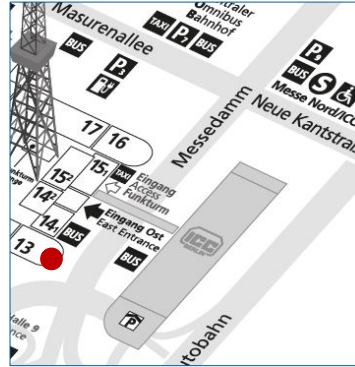
Banner Showcases, illuminated

Location	up to 2 showcases at Entrance East: - passage Entrance East/Hall 14.1: 2 showcases - passage Entrance East/Hall 15.1: 2 showcases
Size (w x h)	1.18 m x 1.75 m per banner
Hire Charge	740.00 EUR per banner
Production/ Installation	315.00 EUR per banner
Status	Availability upon request

ON-SITE ADVERTISING MESSEDAMM HIGH TRAFFIC AREA

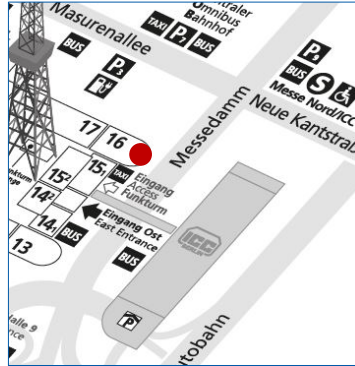


HIGH TRAFFIC – OUTDOORS



Rotunda Hall 13

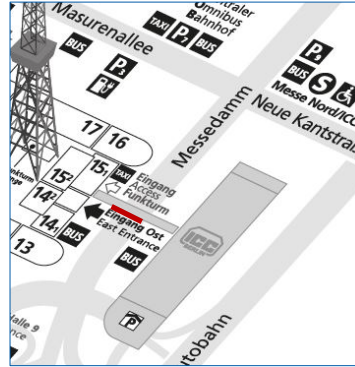
Location	Rotunda Hall 13 facing main road Messedamm: ascend and descent to highway
Size (w x h)	3.04 m x 3.00 m per component 17 components in total, i.e. 51.68 m x 3.00 m in total
Hire Charge	30,240.00 EUR for all 17 components
Production/ Installation	6,420.00 EUR for all 17 components
Status	Availability upon request



Rotunda Hall 16

Location	Rotunda Hall 16 facing the crossroads between the main roads Messedamm, Masurenallee and Neue Kanstraße
Size (w x h)	3.04 m x 3.00 m per component 18 components in total, i.e. 54.72 m x 3.00 m in total
Hire Charge	32,020.00 EUR for all 18 components
Production/ Installation	6,795.00 EUR for all 18 components
Status	Availability upon request

HIGH TRAFFIC – OUTDOORS



Mega-Banner at the ICC Bridge South

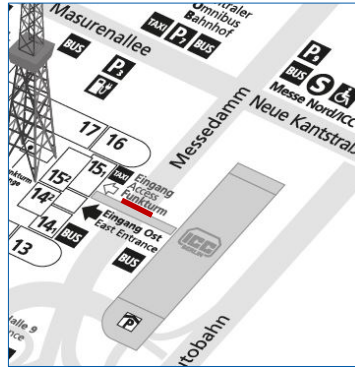
Location at the ICC Bridge South directly above the main road Messedamm: connection between the ICC Berlin and the Berlin exhibition site

Size (w x h) 40.00 m x 4.24 m

Hire Charge 26,607.00 EUR

Production/Installation 4,565.00 EUR

Status Availability upon request



Mega-Banner at the ICC Bridge North

Location at the ICC Bridge North directly above the main road Messedamm: connection between the ICC Berlin and the Berlin exhibition site

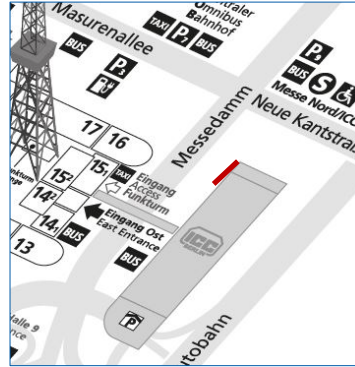
Size (w x h) 40.00 m x 4.24 m

Hire Charge 26,607.00 EUR

Production/Installation 4,565.00 EUR

Status Availability upon request

HIGH TRAFFIC – OUTDOORS



Banner at the ICC West facing Messedamm

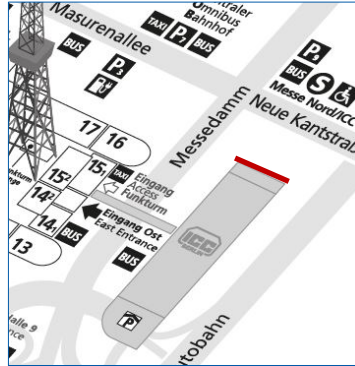
Location at the ICC West facing Messedamm

Size (w x h) 23.80 m x 2.75 m

Hire Charge 9,250.00 EUR

Production/Installation 3,240.00 EUR

Status Availability upon request



Banner at the ICC Main Front North facing Neue Kantstraße

Location at the ICC Main Front North facing Neue Kantstraße

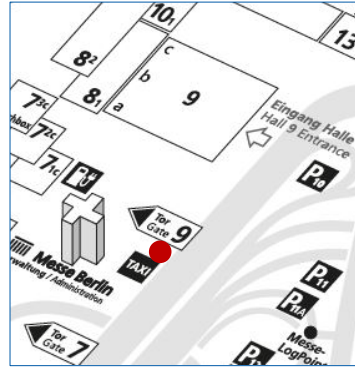
Size (w x h) 47.80 m x 2.75 m

Hire Charge 19,452.00 EUR

Production/Installation 4,580.00 EUR

Status Availability upon request

HIGH TRAFFIC – OUTDOORS



Mega-Banner plus 2 lateral Banners next to the HQ

Location at the Headquarters of Messe Berlin facing Messedamm next to the access to Gate 9 and the taxi stop

Size (w x h) 1 front side banner: 9.20 m x 5.95 m
2 side banners: 2.90 m x 5.90 m each

Hire Charge 15,238.00 EUR for all 3 banners

Production/Installation 7,010.00 EUR for all 3 banners

Status [Availability upon request](#)



Flags next to the HQ of Messe Berlin

Location up to 3 flags at the Headquarters of Messe Berlin facing Messedamm next to the access to Gate 9 and the taxi stop

Size (w x h) 1.50 m x 4.00 m per flag

Hire Charge 325.00 EUR for per flag

Production/Installation 145.00 EUR to 255.00 EUR per flag
depending on layout, quantity and finishing of the flags

Status [Availability upon request](#)

HIGH TRAFFIC – OUTDOORS



Mega-Banners at Facades of Hall 9

Location	at the facades of Hall 9a and Hall 9b on the left and right facing Messedamm
Size (w x h)	visible size: 16.20 m x 8.55 m (production size: 16.40 m x 8.75 m)
Hire Charge	22,779.00 EUR per banner
Production/Installation	5,025.00 EUR per banner
Status	Availability upon request



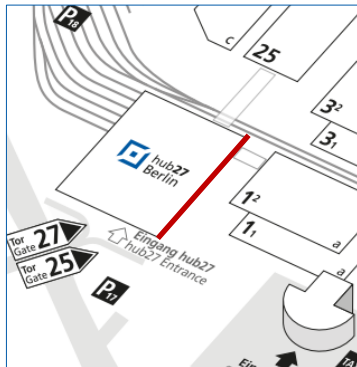
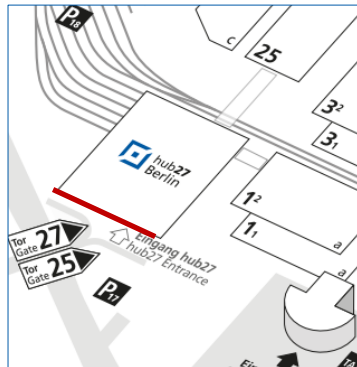
Entrance Banner with backlighting on Hall 9

Location	directly above the entrance doors to Hall 9 facing Messedamm
Size (w x h)	9.60 m x 2.30 m
Hire Charge	7,340.00 EUR
Production/Installation	1,300.00 EUR
Status	Availability upon request

ON-SITE ADVERTISING hub27



hub27 – OUTDOORS



Mega-Banners on the Facade of hub27, South Side

Location banners on the southern facade of hub27 facing Jaffestraße (see red marks on the left picture)

Size (w x h) position 1: 8.60 m x 5.75 m
position 2: 17.35 x 15.00 m
other sizes, positions and formats on demand

Hire Charge position 1: 12,140.00 EUR
position 2: 54,075.00 EUR

Production/Installation position 1: 4,700.00 EUR
position 2: 12,910.00 EUR

Status Availability upon request

Mega-Banners on the Facade of hub27, East Side

Location banners on the eastern facade of hub27 facing Entrance South and Hall 1 (see red marks on the left picture)

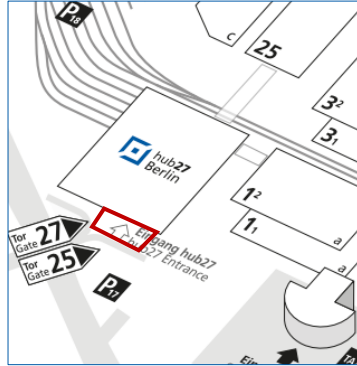
Size (w x h) position 1: 19.60 m x 5.75 m; position 2: 7.30 m x 14.95 m
position 3: 7.05 m x 14.95 m
other sizes, positions and formats on demand

Hire Charge position 1: 24,710.00 EUR; position 2: 23,929.00 EUR
position 3: 23,110.00 EUR

Production/Installation position 1: 5,630.00 EUR; position 2: 5,490.00 EUR
position 3: 5,370.00 EUR

Status Availability upon request.

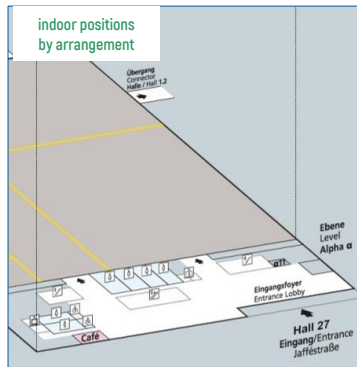
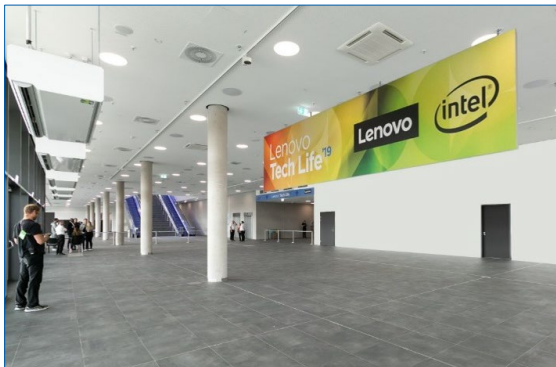
hub27 – OUTDOORS



Pillar Brandings at the Entrance to hub27, 4-sided

Location	up to 4 pillar brandings side by side at the entrance to hub27, each 4-sided
Size (w x h)	complete version: 0.55 m x 4.10 m per side (see red marks on the left picture) short version: 0.55 m x 2.80 m per side (see blue marks on the left picture)
Hire Charge	complete version: 2,015.00 EUR per 4-sided pillar branding short version: 1,375.00 EUR per 4-sided pillar branding
Production/ Installation	complete version: 1,475.00 EUR per 4-sided pillar branding short version: 1,375.00 EUR per 4-sided pillar branding
Status	Availability upon request

hub27 – INDOORS



Hanging Banner Frames in the Entrance Foyer, 2-sided

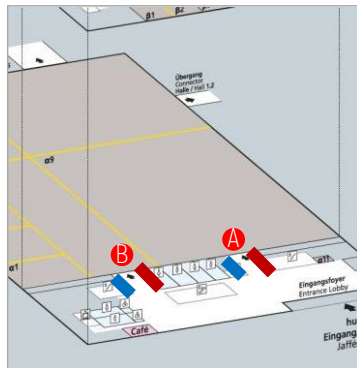
Location hanging banner frames in the Entrance Lobby – e.g. in front of the entrance/exit other positions and formats on demand

Size (w x h) e.g. 9.45 m x 2.00 m per side

Hire Charge e.g. 17,830.00 EUR per double-sided banner frame

Production/ Installation e.g. 2,520.00 EUR per double-sided banner frame

Status Availability upon request



Entrance Banner Frames to the Event Hall

Location banner frames on the walls next to the 2 entrances to the Event Hall: 2 entrances with 2 banner frames each (see A and B marks on the left map)

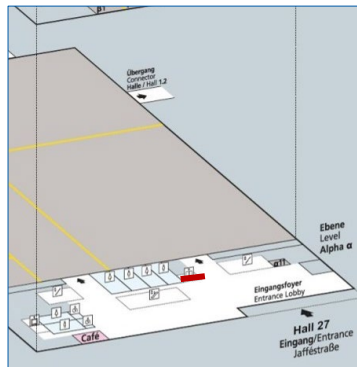
Size (w x h) left banner frames: 5.00 m x 3.10 m (see blue marks on the left map)
right banner frames: 6.50 m x 3.10 m (see red marks on the left map)

Hire Charge left banner frames: 5,660.00 EUR each
right banner frames: 9,200.00 EUR each

Production/ Installation left banner frames: 1,450.00 EUR each
right banner frames: 1,970.00 EUR each

Status Availability upon request

hub27 – INDOORS



Banner Frame above the Elevator in the Entrance Foyer

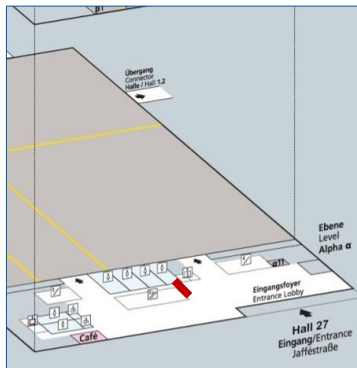
Location banner frame above the elevator and next to the entrance to the Event Hall in the Entrance Lobby
other sizes and formats on demand

Size (w x h) e.g. 9.40 m x 1.90 m per banner frame

Hire Charge e.g. 9,725.00 EUR per banner frame

Production/ Installation e.g. 2,055.00 EUR per banner frame

Status Availability upon request



Hanging Banner Frame in front of the stairs to the Beta Level, 2-sided

Location hanging banner frame in the Entrance Lobby in front of the escalators and stairs
other sizes and formats on demand

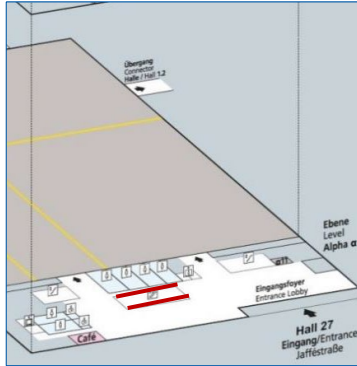
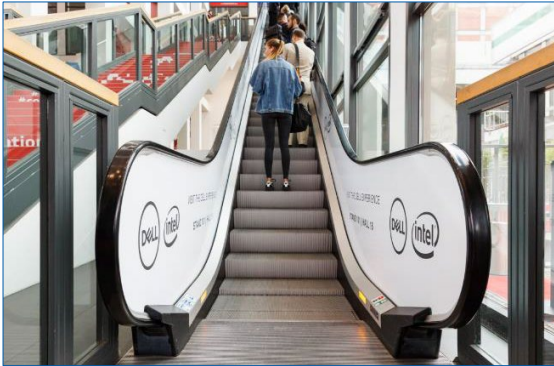
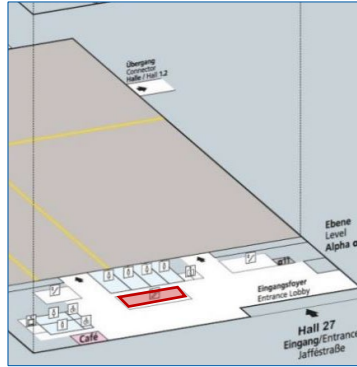
Size (w x h) 7.00 m x 0.992 m per side

Hire Charge 7,156.00 EUR per double-sided banner frame

Production/ Installation 1,750.00 EUR per double-sided banner frame

Status Availability upon request

hub27 – INDOORS



Stair Graphics on the Steps to the Beta Level

Location stairs leading from the Entrance Lobby up to Level Beta:
every step will be equipped with an adhesive foil

Size (w x h) 2.88 m x 0.145 m per step graphic
(37 steps in total)

Hire Charge 8,560.00 EUR for 37 steps

Production/ Installation 1,345.00 EUR for 37 steps

Status Availability upon request

Balustrade Graphics at the Escalators to the Beta Level

Location up to 2 escalators leading from the Entrance Lobby up to Level Beta:
balustrades will be branded with adhesive foil – stencils will be provided on demand
(exemplary picture from another location)

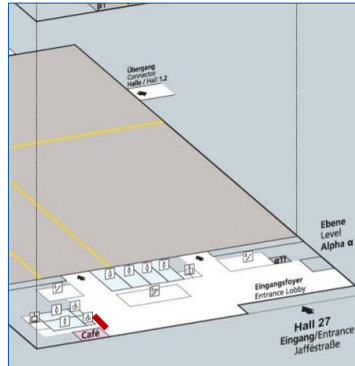
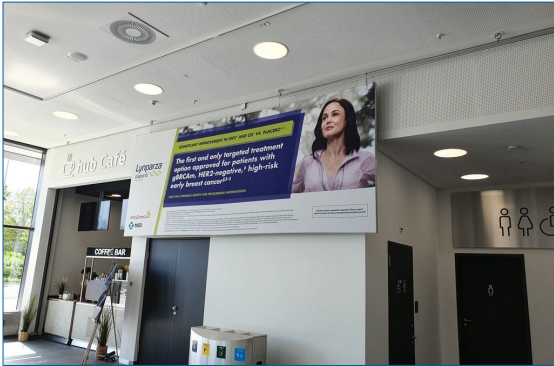
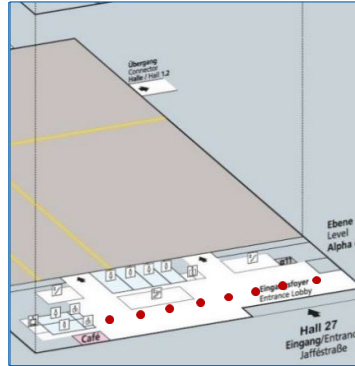
Size (w x h) approx. 50 m² per escalator, i.e. for 2 balustrades

Hire Charge 9,500.00 EUR per escalator, i.e. for 2 balustrades

Production/ Installation 4,470.00 EUR per escalator, i.e. for 2 balustrades

Status Availability upon request

hub27 – INDOORS



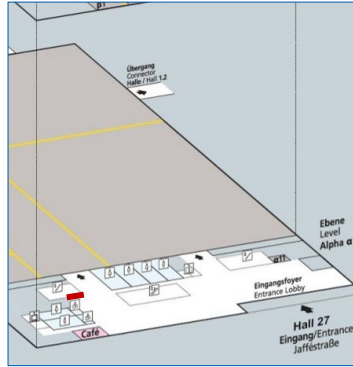
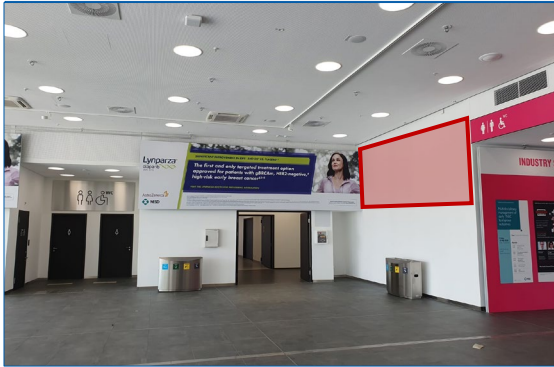
Pillar Brandings, 4-sided

Location	up to 8 pillar brandings side by side directly in the Entrance Lobby, each 4-sided
Size (w x h)	0,60 m x 4,10 m per side (4 sides per pillar) other sizes and formats on demand
Hire Charge	2,015.00 EUR per 4-sided pillar branding
Production/ Installation	1,475.00 EUR per 4-sided pillar branding
Status	Availability upon request

Banner Frame next to the hub-Café

Location	in the Entrance Lobby of hub27 next to the hub-Café
Size (w x h)	4,75 m x 1,90 m
Hire Charge	3,750.00 EUR
Production/ Installation	1,210.00 EUR
Status	Availability upon request

hub27 – INDOORS



Banner Frame besides the Hall Entrance

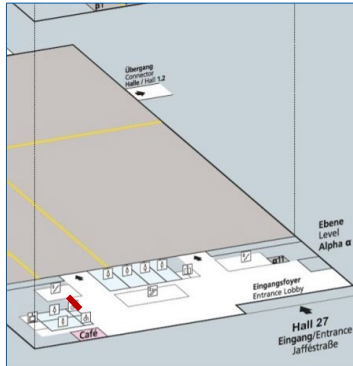
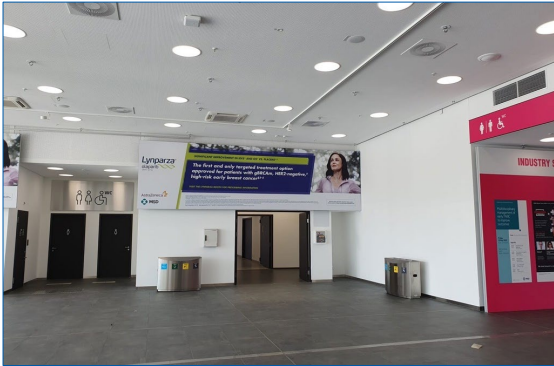
Location in the Entrance Lobby of hub27 besides the entrance to the Event Hall
(see red mark on the left picture)

Size (w x h) 5.20 m x 1.90 m

Hire Charge 4,100.00 EUR

**Production/
Installation** 1,210.00 EUR

Status Availability upon request



Banner Frame next to the Hall Entrance

Location in the Entrance Lobby of hub27 next to the entrance to the Event Hall

Size (w x h) 6.70 m x 1.90 m

Hire Charge 5,285.00 EUR

**Production/
Installation** 1,560.00 EUR

Status Availability upon request

hub27 – INDOORS



Passageway Banners between hub27 and Hall 25, 2-sided

Location up to 3 passageway banners between hub27 and Hall 25
(see red mark on the left map)

Size (w x h) e.g. 10.60 m x 2.00 m per side [2 sides per banner]
other sizes and formats on demand

Hire Charge e.g. 17,590.00 EUR per 2-sided banner

Production/ Installation e.g. 2,290.00 EUR per 2-sided banner

Status Availability upon request



Lateral Passageway Banners between hub27 and Hall 25

Location up to 2 lateral passageway banners between hub27 and Hall 25
(see red marks on the left map)

Size (w x h) 5.05 m x 3.50 m per banner

Hire Charge 7,335.00 EUR per banner

Production/ Installation 825.00 EUR per banner

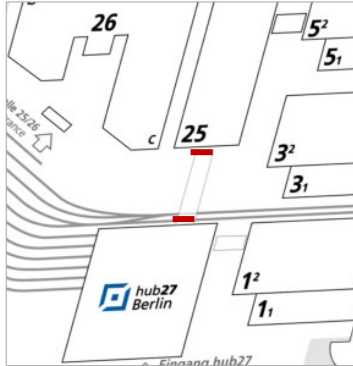
Status Availability upon request

hub27 – INDOORS



Option A: Entrance Banners to hub27 and Hall 25

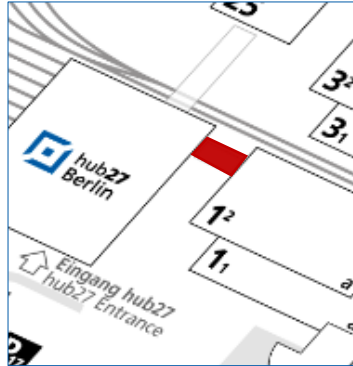
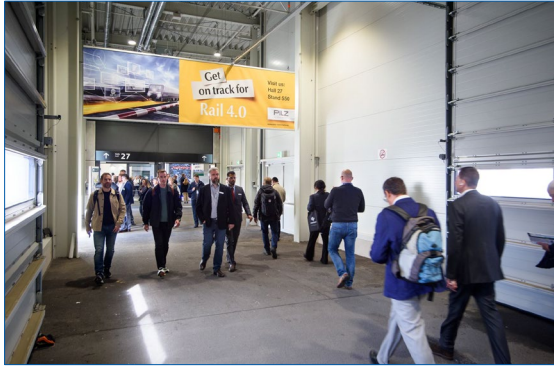
Location	2 entrance banners in the passageway between hub 27 and Hall 25, each 1-sided (see red marks on the left map)
Size (w x h)	10.60 m x 2.00 m per banner
Hire Charge	8,790.00 EUR per banner
Production/ Installation	1,515.00 EUR per banner
Status	Availability upon request



Option B: 2 Entrance Banners to hub27 and Hall 25

Location	2 entrance banners in the passageway between hub 27 and Hall 25, each 1-sided (see red marks on the left map)
Size (w x h)	6.05 m x 1.45 m per banner
Hire Charge	3,640.00 EUR per banner
Production/ Installation	920.00 EUR per banner
Status	Availability upon request

hub27 – INDOORS



Passageway Banners between hub27 and Hall 1.2, 2-sided

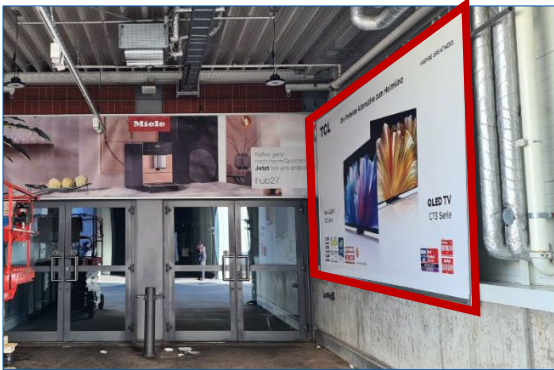
Location up to 3 passageway banners between hub27 and Hall 1.2
(see red mark on the left map and exemplary picture)

Size (w x h) e.g. 5.00 m x 1.50 m per side (2 sides per banner)
other sizes and formats on demand

Hire Charge e.g. 6,225.00 EUR per double-sided banner

Production/ Installation e.g. 1,020.00 EUR per double-sided banner

Status Availability upon request. One position is currently reserved



Lateral Passageway Banners between hub27 and Hall 1.2

Location up to 8 lateral passageway banners between hub27 and Hall 1.2
(see red marks on the left map and picture)

Size (w x h) e.g. 5.00 m x 2.50 m
other sizes and formats on demand

Hire Charge e.g. 5,190.00 EUR per banner

Production/ Installation e.g. 735.00 EUR per banner

Status Availability upon request

hub27 – INDOORS



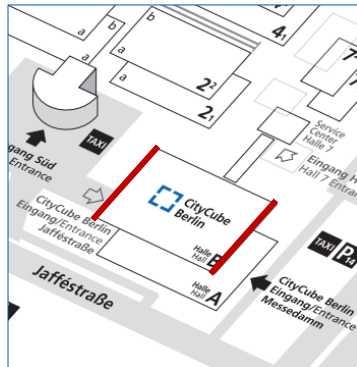
Entrance Banners between hub27 and Hall 1.2, 1-sided

Location	2 entrance banners at the entrances to hub27 and Hall 1.2, each 1-sided (see red marks on the left map)
Size (w x h)	Entrance banner Hall 1.2: 6.00 m x 1.10 m Entrance banner hub27: 6.50 m x 1.50m
Hire Charge	Entrance banner Hall 1.2: 2,740.00 EUR Entrance banner hub27: 4,046.00 EUR
Production/ Installation	Entrance banner Hall 1.2: 920.00 EUR Entrance banner hub27: 735.00 EUR
Status	Availability upon request

ON-SITE ADVERTISING CityCube Berlin



CityCube Berlin OUTDOORS



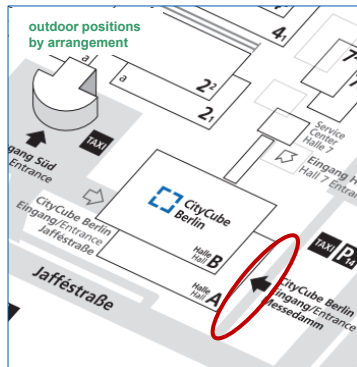
Mega-Banners above both Entrances of CityCube Berlin

Location	up to 2 mega-banners (consisting of 3 segments each) at the facades of the CityCube Berlin at the Entrance Messedamm and at the Entrance Jaffestraße
Size (w x h)	3 banner segments per facade/mega-banner in total: 29.20 m to 31.25 m x 11.65 m per banner segment; 1,730.25 m ² in total
Hire Charge	105,385.00 EUR for 1 mega-banner (consisting of 3 segments)
Production/ Installation	311,490.00 EUR for 1 mega-banner (consisting of 3 segments)
Status	Availability upon request

Flags at the Access to "Entrance Messedamm"

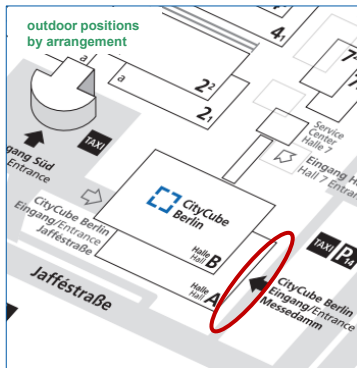
Location	up to 30 flags in front of the CityCube Berlin at the access to Entrance Messedamm (with or without banner arm)
Size (w x h)	1.50 m x 4.00 m per flag
Hire Charge	325.00 EUR per flag
Production/ Installation	145.00 EUR per flag as an outrigger-flag
Status	Availability upon request

CityCube Berlin OUTDOORS – ENTRANCE MESSEDDAMM



Bench Displays at the Access to Entrance Messedamm, 2-sided

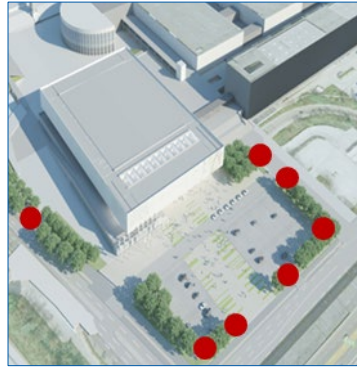
Location	at the access to Entrance Messedamm: exact positions by arrangement
Size (w x h)	2.05 m x 2.05 m per side [2 sides per display]
Hire Charge	1,950.00 EUR per 2-sided display
Production/ Installation	405.00 EUR per 2-sided display
Status	Already booked



Mobile Advertising Towers at the Access to Entrance Messedamm, 4-sided

Location	e.g. in front of the CityCube Berlin at the access to Entrance Messedamm: exact positions by arrangement
Size (w x h)	small version: 2.302 m x 4.15 m per side [4 sides per tower] large version: 3.302 m x 6.15 m per side [4 sides per tower]
Hire Charge	small version: 11,472.00 EUR per 4-sided tower large version: 24,440.00 EUR per 4-sided tower
Production/ Installation	small version: 2,970.00 EUR per 4-sided tower large version: 4,995.00 EUR per 4-sided tower
Status	Availability upon request

CityCube Berlin OUTDOORS – ENTRANCE MESSEDDAMM



Outdoor Frames, each 2-sided

Location at several locations in front of the CityCube Berlin at the access to Entrance Messedamm (see red marks on the left map)

Size (w x h) 2.00 m x 1.30 m per side (2 sides per display)
(see red mark on the left picture)

Hire Charge 1,480.00 EUR per 2-sided display

Production/ Installation 195.00 EUR per 2-sided display

Status Availability upon request



Floor Graphics at the Access to Entrance Messedamm

Location adhesive foils at diverse locations in front of the CityCube Berlin at the access to Entrance Messedamm: exact positions by arrangement

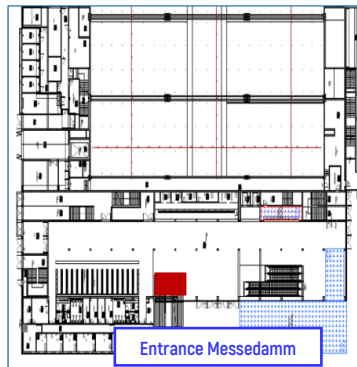
Size (w x h) e.g. 2.40 m x 2.40 m per squared floor graphic
other sizes and formats on demand

Hire Charge e.g. 2,102.00 EUR per squared floor graphic

Production/ Installation e.g. 670.00 EUR per squared floor graphic

Status Availability upon request

CityCube Berlin INDOORS – ENTRANCE MESSEDDAMM



Option A: Step Graphics at the Stairs in the Entrance Lobby - Full Version

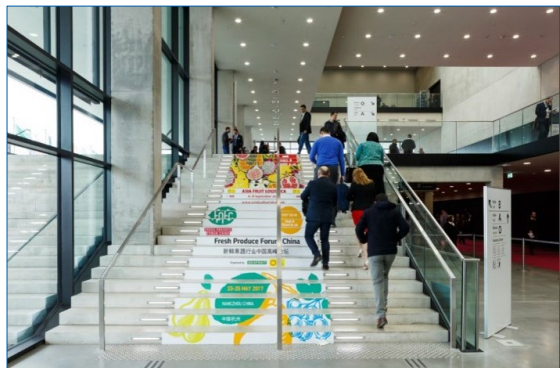
Location stairs in the Entrance Lobby leading to the upper level:
every step will be equipped with an adhesive foil on the full area (lamps excluded)

Size (w x h) steps 1-7 and 10-22: 5.15 m x 0.15 m each step
Steps 8, 9 and 23: 4.37 m x 0.15 m each step (23 steps in total)

Hire Charge 11,760.00 EUR for all 23 step graphics

Production/ Installation 1,060.00 EUR for all 23 step graphics

Status Availability upon request



Option B: Step Graphics at the Stairs in the Entrance Lobby - Narrow Version

Location stairs in the Entrance Lobby leading to the upper level:
every step will be equipped with an adhesive foil on the central area

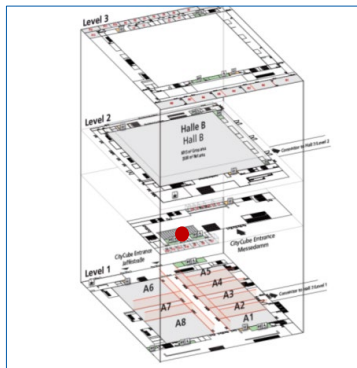
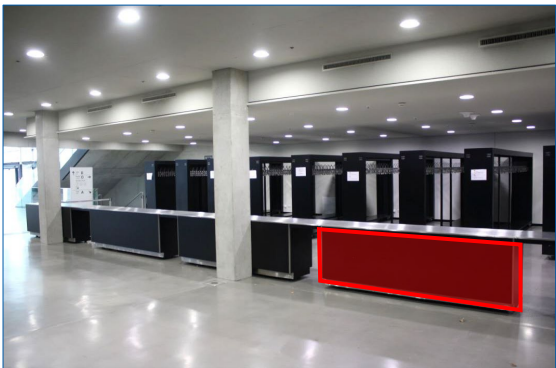
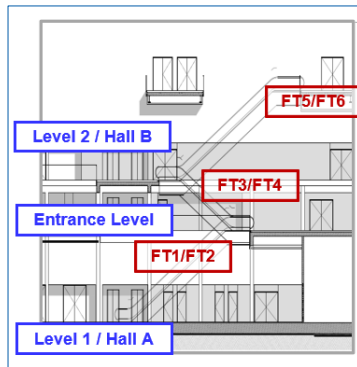
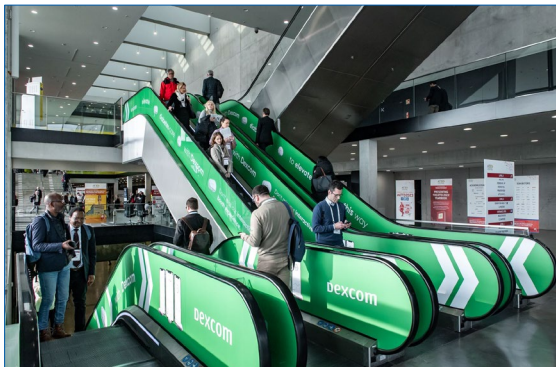
Size (w x h) 2.18 m x 0.145 m per step graphic (23 steps in total)

Hire Charge 6,350.00 EUR for all 23 step graphics

Production/ Installation 620.00 EUR for all 23 step graphics

Status Availability upon request

CityCube Berlin INDOORS – ENTRANCE MESSEDAMM



Balustrade Brandings at Escalators

Location	escalators in the Entrance Lobby leading to Levels 1, 2 and 3 only visible parts of the balustrades will be branded with adhesive foil -
Size (w x h)	(1) 2 escalators FT1/FT2: approx. 32.00 m ² each balustrade (see plan on the left) (2) 2 escalators FT3/FT4: approx. 21.20 m ² each balustrade (see plan on the left) (3) 2 escalators FT5/FT6: approx. 30.20 m ² each balustrade (see plan on the left)
Hire Charge	(1) 20,996.00 EUR for both escalators, each with 2 balustrades (2) 13,908.00 EUR for both escalators, each with 2 balustrades (3) 20,590.00 EUR for both escalators, each with 2 balustrades
Production/ Installation	(1) 9,545.00 EUR for both escalators, each with 2 balustrades (2) 6,320.00 EUR for both escalators, each with 2 balustrades (3) 8,490.00 EUR for both escalators, each with 2 balustrades
Status	Availability upon request

Cloakroom Counter Branding

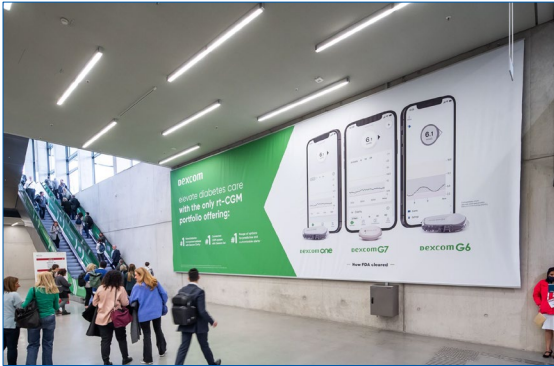
Location	branding with adhesive foil of up to 8 cloakroom counters in the Entrance Lobby
Size (w x h)	approx. 2.526 m x 0.75 m per counter
Hire Charge	660.00 EUR per counter
Production/ Installation	85.00 EUR per counter
Status	Availability upon request

CityCube Berlin INDOORS – LEVEL 1



Entrance Banners to Hall A

Location	up to 2 banners in the East Lobby Level 1 directly above the entrance doors to Hall A
Size (w x h)	9.00 m x 1.65 m per banner
Hire Charge	8,455.00 EUR for both banners
Production/ Installation	2,445.00 EUR for both banners
Status	Availability upon request



Foyer Banner at Position 1

Location	in the East Lobby Level 1 opposite to the entrance doors to Hall A directly at the escalators
Size (w x h)	12.00 m x 4.39 m
Hire Charge	9,817.00 EUR
Production/ Installation	3,050.00 EUR
Status	Availability upon request

CityCube Berlin INDOORS – LEVEL 1



Foyer Banner at Position 2

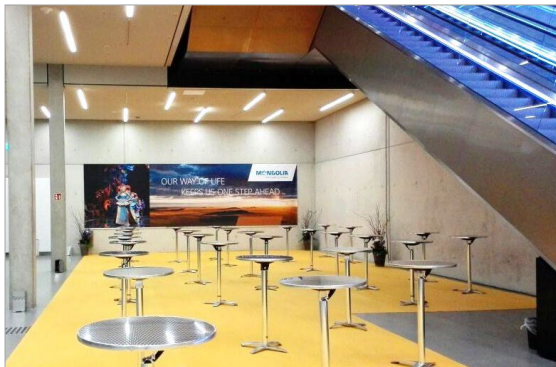
Location in the East Lobby Level 1 opposite to Hall A

Size (w x h) 8.50 m x 3.00 m

Hire Charge 4,074.00 EUR

**Production/
Installation** 2,080.00 EUR

Status Availability upon request



Foyer Banner at Position 3

Location in the East Lobby Level 1 next to Hall A

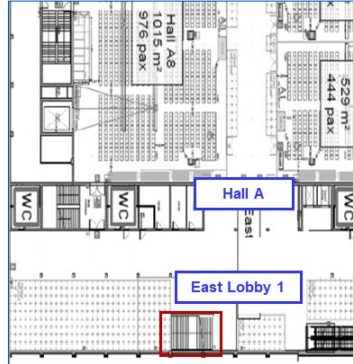
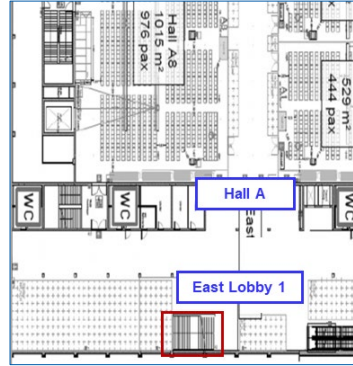
Size (w x h) 8.50 m x 2.50 m

Hire Charge 3,394.00 EUR

**Production/
Installation** 1,990.00 EUR

Status Availability upon request

CityCube Berlin INDOORS – LEVEL 1



Option A: Step Graphics at the Stairs Lobby 1/Entrance Level - Full Version

Location staircase leading from the East Lobby Level 1 to the Entrance Level:
every step will be equipped with an adhesive foil on the full area (lamps excluded)

Size (w x h) 4.37 x 0.15 per step graphic (42 steps in total, 21 steps per staircase)

Hire Charge 7,805.00 EUR for 21 step graphics

Production/ Installation 970.00 EUR for 21 step graphics

Status Availability upon request

Option B: Step Graphics at the Stairs Lobby 1/Entrance Level - Narrow Version

Location staircase leading from the East Lobby Level 1 to the Entrance Level:
every step will be equipped with an adhesive foil on the central area

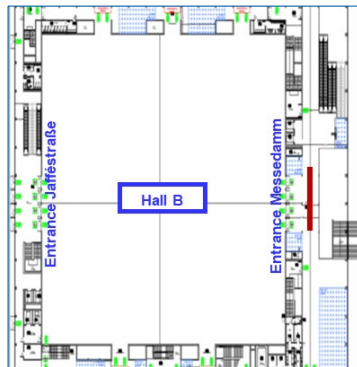
Size (w x h) 1.80 m x 0.145 m per step graphic (42 steps in total, 21 steps per staircase)

Hire Charge 4,770.00 EUR for 21 step graphics

Production/ Installation 570.00 EUR for 21 step graphics

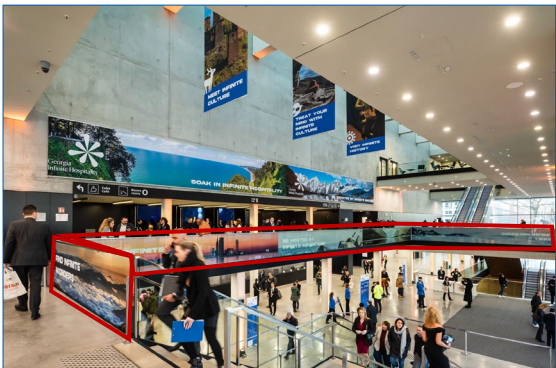
Status Availability upon request

CityCube Berlin INDOORS – LEVEL 2



Entrance Banner to Hall B

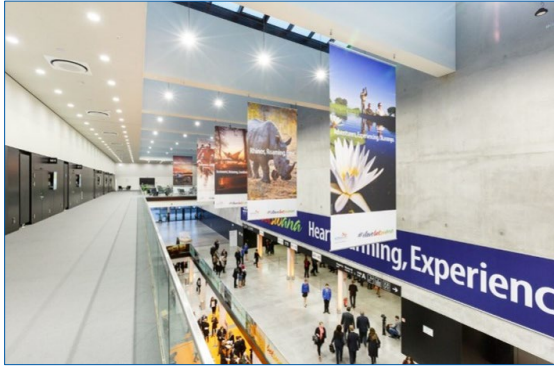
Location	in the East Lobby Level 2 directly above the main entrance doors to Hall B
Size (w x h)	e.g. 29.00 m x 2.40 m other sizes and special formats on demand
Hire Charge	22,236.00 EUR per banner
Production/ Installation	4,510.00 EUR per banner
Status	Availability upon request



Balustrade Brandings Level 2

Location	foil brandings on the glass balustrades in the East Lobby Level 2 in front of Hall B (see red marks and numbers on the left map)
Size (w x h)	(1) 9.40 m x 1.07 m per side (2 sides per balustrade) (2) 24.55 m x 1.07 m per side (2 sides per balustrade) (3) 4.97 m x 1.07 m per side (2 sides per balustrade)
Hire Charge	(1) 6,430.00 EUR; (2) 16,065.00 EUR; (3) 3,215.00 EUR
Production/ Installation	(1) 720.00 EUR; (2) 1,875.00 EUR; (3) 380.00 EUR
Status	Availability upon request

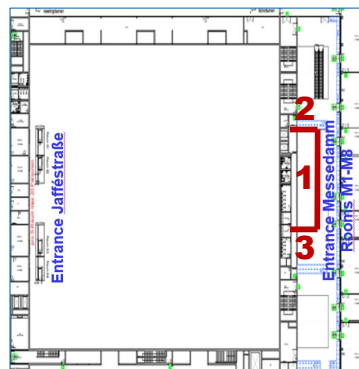
CityCube Berlin INDOORS – LEVEL 2



Hanging Banners between Levels 2 and 3, 2-sided

Location	up to 4 suspended banners at diverse locations between Levels 2 and 3
Size (w x h)	e.g. 3.00 m x 6.00 m per side (2 sides per banner) other sizes and special formats on demand
Hire Charge	9,455.00 EUR per double-sided banner
Production/ Installation	2,730.00 EUR per double-sided banner
Status	Availability upon request

CityCube Berlin INDOORS – LEVEL 3



Balustrade Brandings Level 3

Location foil brandings on the glass balustrades in the East Lobby Level 3 (see red marks and numbers on the left map)

Size (w x h) (1) 30.60 m x 1.07 m per side (2 sides per balustrade)
(2) & (3) each 11.00 m x 1.07 m per side (2 sides per balustrade)

Hire Charge (1) 12,594.00 EUR
(2) & (3) 4,954.00 EUR each

Production/ Installation (1) 2,020.00 EUR
(2) & (3) 795.00 EUR each

Status Availability upon request



Balustrade Brandings Level 3 of 2 Lateral Parts

Location foil brandings on the glass balustrades of the 2 lateral parts in the East Lobby Level 3 (see red marks and numbers on the left map)

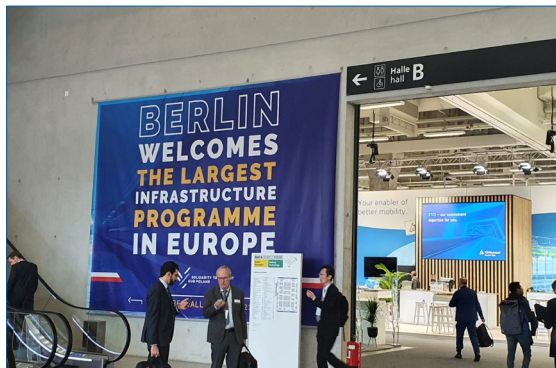
Size (w x h) (1.1-1.2) each 11.80 m x 1.07 m per side (2 sides per balustrade)
(2.1-2.3) each 11.07 m x 1.07 m per side (2 sides per balustrade)
(3) 7.80 m x 1.07 m per side (2 sides per balustrade) (escalator)

Hire Charge (1.1-1.2) 5,405.00 EUR each; (2.1-2.3) 4,954.00 EUR each
(3) 3,515.00 EUR

Production/ Installation (1.1-1.2) 870.00 EUR each; (2.1-2.3) 795.00 EUR each
(3) 565.00 EUR

Status Availability upon request

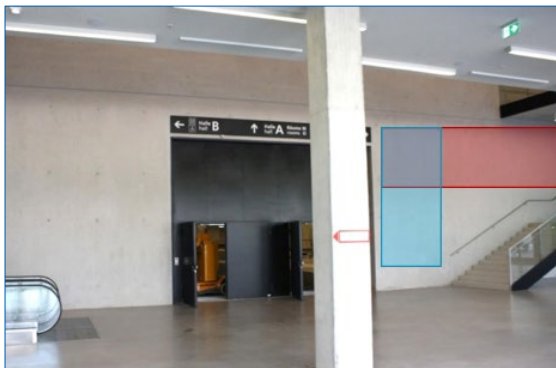
CityCube Berlin INDOORS – ENTRANCE JAFFÉSTRASSE LEVEL 1



Entrance Banner to Hall A on the left

Location	in the West Lobby Level 1 directly next to the entrance doors to Hall A
Size (w x h)	(1) 5.80 m x 4.35 m (see picture on the left) (2) 4.20 m x 3.00 m other sizes and formats on demand
Hire Charge	(1) 8,075.00 EUR (2) 4,035.00 EUR
Production/ Installation	(1) 2,115.00 EUR (2) 1,770.00 EUR

Status Availability upon request

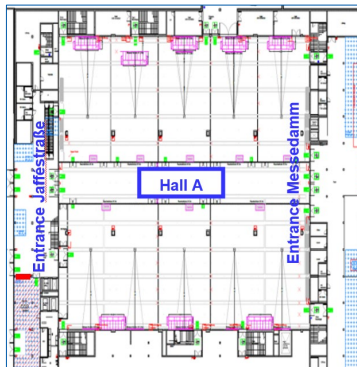
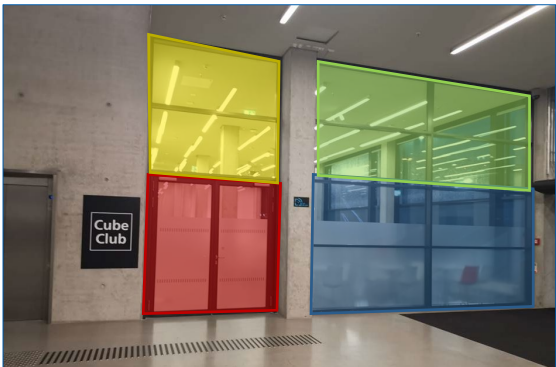
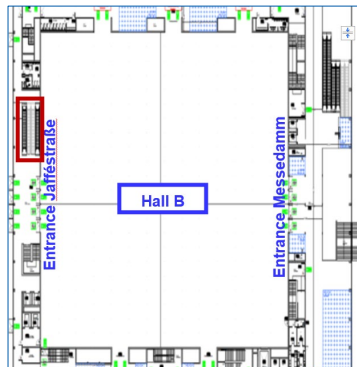
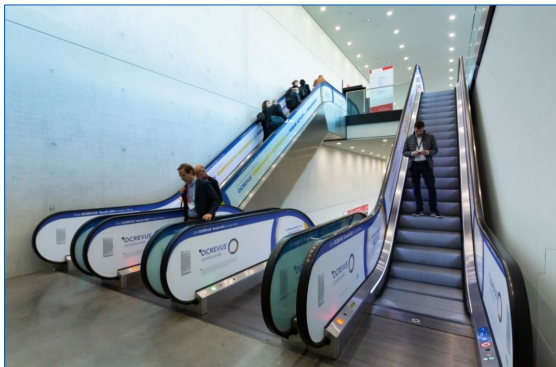


Entrance Banner to Hall A on the right

Location	in the West Lobby Level 1 directly next to the entrance doors to Hall A
Size (w x h)	(1) approx. 8.00 m x 2.00 m (see red mark on the left picture) (2) approx. 3.00 m x 5.00 m (see blue mark on the left picture) other sizes and formats on demand
Hire Charge	(1) 5,120.00 EUR (2) 4,800.00 EUR
Production/ Installation	(1) 2,090.00 EUR (2) 1,335.00 EUR

Status Availability upon request

CityCube Berlin INDOORS – ENTRANCE JAFFÉSTRASSE LEVEL 1/LEVEL 2



Balustrade Brandings at Escalators West Lobby Level 1 and Level 2

Location escalators between the West Lobby Level 1 and the West Lobby Level 2
only visible parts of the balustrades will be branded with adhesive foil
stencils will be provided on demand

Size (w x h) (1) 2 escalators WFT1/WFT2: approx. 32.00 m² each balustrade
(2) 2 escalators WFT3/WFT4: approx. 21.20 m² each balustrade

Hire Charge (1) 20,996.00 EUR for both escalators, each with 2 balustrades
(2) 13,908.00 EUR for both escalators, each with 2 balustrades

Production/ Installation (1) 9,545.00 EUR for both escalators, each with 2 balustrades
(2) 6,320.00 EUR for both escalators, each with 2 balustrades

Status Availability upon request

CubeClub Window-Branding

Location 1-sided foil brandings on the glass walls of the CubeClub in the West Lobby Level 1
(see red mark on the left plan)

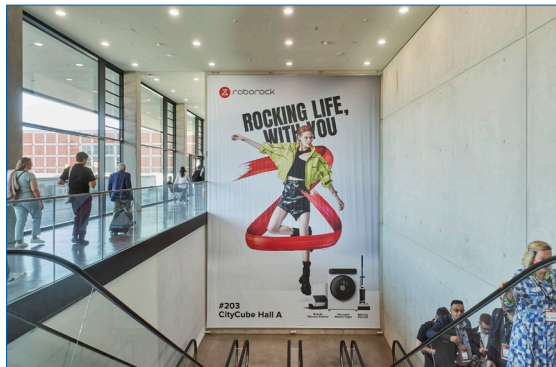
Size (w x h) (1) 2 windows top left: 2.20 m x 1.10 m per window (see yellow mark on the left picture)
(2) 2 doors: 0.935 m x 2.27 m per door (see red mark on the left picture)
(3) 4 windows top right: 2.68 m x 1.10 m per window (see green mark on the left picture)
(4) 4 windows bottom right: 2.67 m x 1.19 m per window (see blue mark on the left picture)

Hire Charge 775.00 EUR for each position

Production/ Installation (1) 225.00 EUR; (2) 180.00 EUR; (3) 495.00 EUR; (4) 545.00 EUR

Status Availability upon request

CityCube Berlin INDOORS – ENTRANCE JAFFÉSTRASSE LEVEL 1/LEVEL 2



Escalator Banner

Location in the West Lobby leading from Level 1 to Level 2

Size (w x h) 6.30 m x 9.25 m
other sizes and formats on demand

Hire Charge 14,902.00 EUR

Production/ Installation 3,300.00 EUR

Status Availability upon request



Step Graphics at the Stairs in the West Lobby Level 1 to Level 2

Location staircase leading from the West Lobby Level 1 to the West Lobby Level 2:
every step will be equipped with an adhesive foil on the full area

Size (w x h) 2.55 m x 0.16 m per step graphic
(13 steps per landing)

Hire Charge 4,010.00 EUR for 13 step graphics (per landing)

Production/ Installation 585.00 EUR for 13 step graphics (per landing)

Status Availability upon request

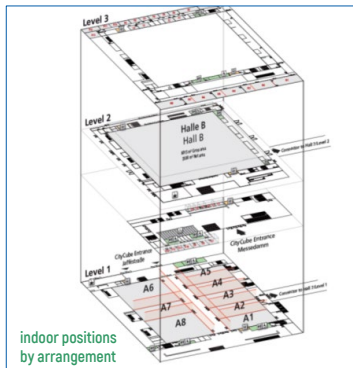
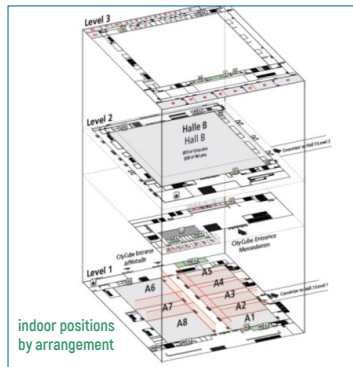
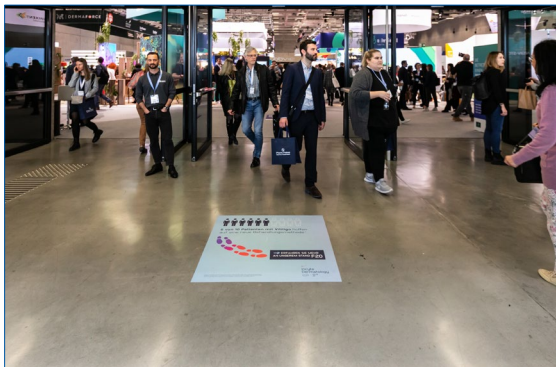
CityCube Berlin INDOORS – ENTRANCE JAFFÉSTRASSE LEVEL 2



Entrance Banner to Hall B

Location	in the West Lobby Level 2 directly above the entrance doors to Hall B
Size (w x h)	12.00 m x 1.44 m other sizes and formats on demand
Hire Charge	5,520.00 EUR
Production/ Installation	2,180.00 EUR
Status	Availability upon request

CityCube Berlin INDOORS – ALL AREAS



Floor Graphics and Carpet Brandings

Location indoor positions by arrangement: e.g. in the foyers and entrance areas

Size (w x h) (1) e.g. 1.00 m x 1.00 m per squared floor graphic
(2) e.g. 2.00 m x 2.00 m per squared floor graphic
other sizes, special formats and carpet brandings on demand

Hire Charge (1) e.g. 360.00 EUR per squared floor graphic
(2) e.g. 1,012.00 EUR per squared floor graphic

Production/ Installation (1) e.g. 105.00 EUR per squared floor graphic
(2) e.g. 335.00 EUR per squared floor graphic

Status Availability upon request

Pillar Brandings, each 4-sided

Location indoor positions by arrangement: e.g. directly in the Entrance Lobby

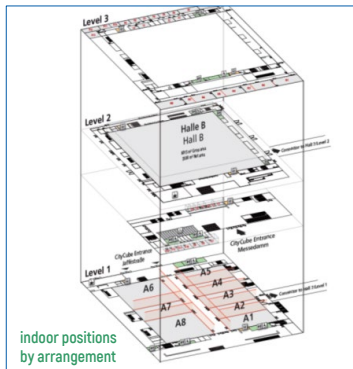
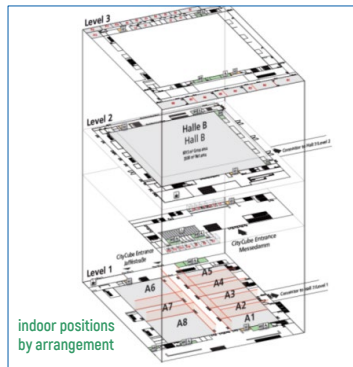
Size (w x h) 0.48 m x 2.70 m per side (4 sides per pillar)

Hire Charge 2,230.00 EUR per 4-sided pillar branding

Production/ Installation 675.00 EUR per 4-sided pillar branding

Status Availability upon request

CityCube Berlin INDOORS – ALL AREAS



Fabric Frames

Location fabric frames in the lobbies on the entrance level: exact positions by arrangement

Size (w x h) e.g. 5.10 m x 2.72 m per frame
other sizes on demand

Hire Charge e.g. 5,202.00 EUR per frame

Production/ Installation e.g. 1,000.00 EUR per frame

Status Availability upon request

Poster Frames

Location poster frames at various locations in the CityCube

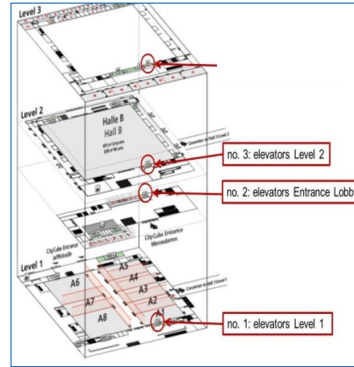
Size (w x h) 0.594 m x 0.84 m (DIN A1) per poster

Hire Charge 210.00 EUR per poster

Production/ Installation 40.00 EUR per poster

Status Availability upon request

CityCube Berlin INDOORS – ALL AREAS



Paneling Branding next to the Elevators

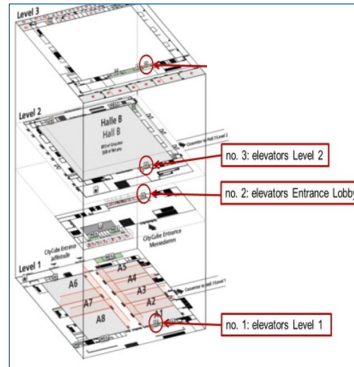
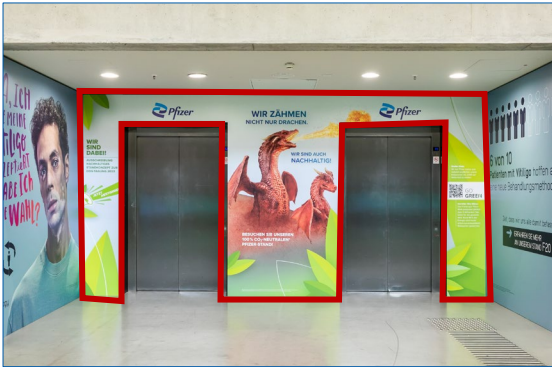
Location adhesive foils on a paneling on the side walls next to the elevators:
3 possible positions in the East Lobby of the CityCube

Size (w x h) 2.95 m x 2.75 m per side wall

Hire Charge 7,130.00 EUR for two side walls

Production/ Installation 3,960.00 EUR for two side walls

Status Availability upon request



Paneling Branding around the Elevator Doors

Location adhesive foil on a paneling around the doors of the elevators:
3 possible positions in the East Lobby of the CityCube

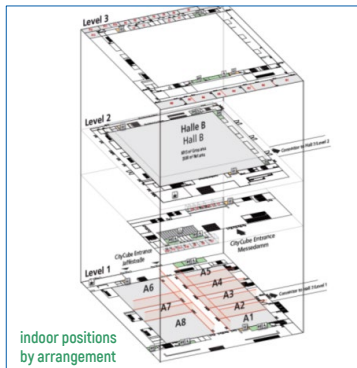
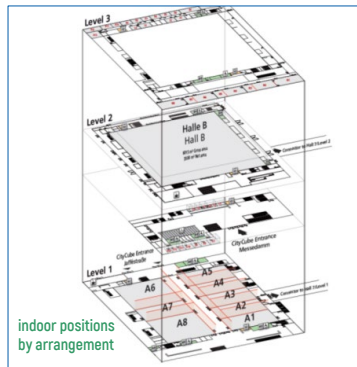
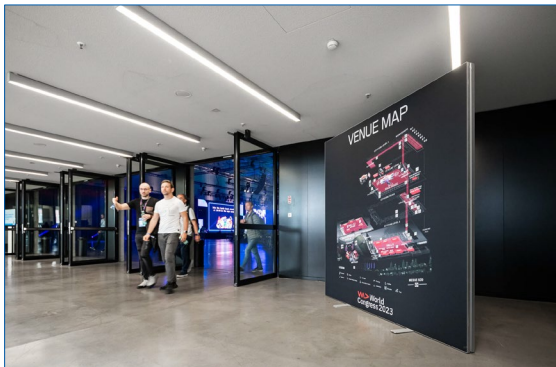
Size (w x h) approx. 8.38 m²

Hire Charge 4,790.00 EUR for one paneling branding

Production/ Installation 2,635.00 EUR for one paneling branding

Status Availability upon request

CityCube Berlin INDOORS – ALL AREAS



PILA Frames, 1-sided

Location framed banners in the lobbies on all levels: exact positions by arrangement

Size (w x h) (1) e.g. 2.28 m x 2.28 m per banner (see picture on the left)
(2) e.g. 6.00 m x 2.00 m per banner
other sizes on demand

Hire Charge (1) e.g. 1,950.00 EUR
(2) e.g. 4,510.00 EUR

Production/Installation (1) e.g. 530.00 EUR
(2) e.g. 695.00 EUR

Status Availability upon request

Banner Frames, 1- or 2-sided

Location 1- or 2-sided banner frames in the lobbies on all levels:
exact positions by arrangement

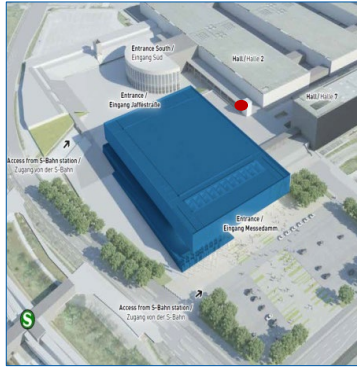
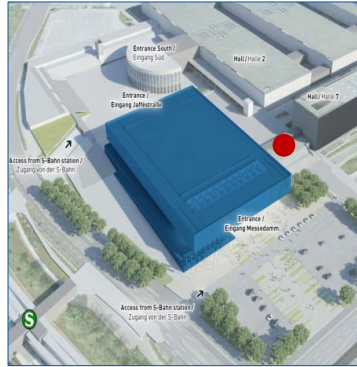
Size (w x h) 1.00 m x 2.00 m per side
other sizes on demand

Hire Charge 1,500.00 EUR per 2-sided banner frame

Production/Installation 365.00 EUR per 2-sided banner frame

Status Availability upon request

CityCube Berlin SPECIALS



Window and Door Brandings in the Passageway to Hall 7

- Location** adhesive foils on the windows and at the doors of the "Connector 2" between CityCube Berlin and Hall 7 on Level 2; exact positions by arrangement
- Size (w x h)** (1) e.g. 3.02 m x 1.35 m per window branding
(2) e.g. 1.185 m x 2.175 m per door branding
other sizes and special formats on demand
- Hire Charge** (1) e.g. 1,530.00 EUR per window branding; (2) e.g. 970.00 EUR per door branding
- Production/ Installation** (1) e.g. 190.00 EUR per window branding; (2) e.g. 130.00 EUR per door branding

Status Availability upon request

Banner at Elevator Tower, South Side

- Location** outside at the elevator tower between CityCube and Hall 2.2 (see red mark on the left picture)
- Size (w x h)** 5.25 m x 4.70 m
other sizes and formats on demand
- Hire Charge** 6,415.00 EUR
- Production/ Installation** 1,880.00 EUR
- Status** Availability upon request

CITYCUBE BERLIN SPECIALS



Banner at Elevator Tower, East Side

Location outside at the elevator tower between CityCube and Hall 2.2

Size (w x h) 5,45 m x 6,00 m
other sizes and formats on demand

Hire Charge 8,505.00 EUR

Production/ Installation 2,000.00 EUR

Status Availability upon request



Branding at Elevator Tower, North Side

Location outside at the elevator tower between CityCube and Hall 2.2
(see red mark on the left picture)

Size (w x h) 5,45 m x 3,20 m
other sizes and formats on demand

Hire Charge 4,535.00 EUR

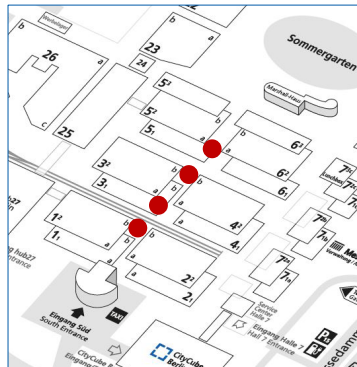
Production/ Installation 1,765.00 EUR

Status Availability upon request

ON-SITE ADVERTISING SPECIFIC HALL AREAS



SPECIFIC HALL AREAS – OUTDOORS



Entrance Banners to the Middle Foyers of Halls 1.2 to 6.2

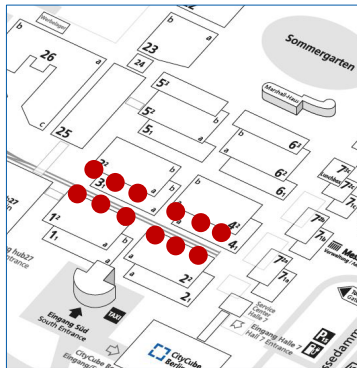
Location up to 4 banners directly above the entrance doors to the middle foyers of Halls 1.2/ 2.2, 3.2/ 4.2 and 5.2/ 6.2

Size (w x h) 11.50 m x 2.20 m per banner
(4 banners in total)

Hire Charge 8,352.00 EUR per banner

Production/ Installation 2,340.00 EUR per banner

Status Availability upon request



Banners at the Facades of Halls 1.2 to 4.2

Location up to 12 banners at the facades of Halls 1.2, 2.2, 3.2 and 4.2

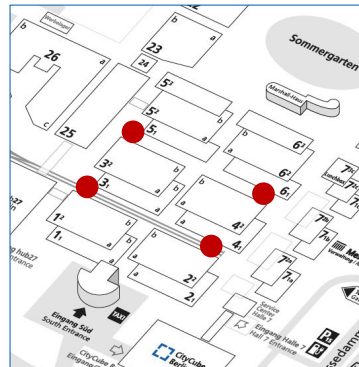
Size (w x h) 11.60 m x 5.20 m per banner

Hire Charge 9,608.00 EUR per banner

Production/ Installation 2,790.00 EUR per banner

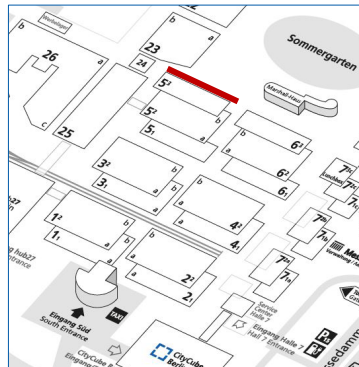
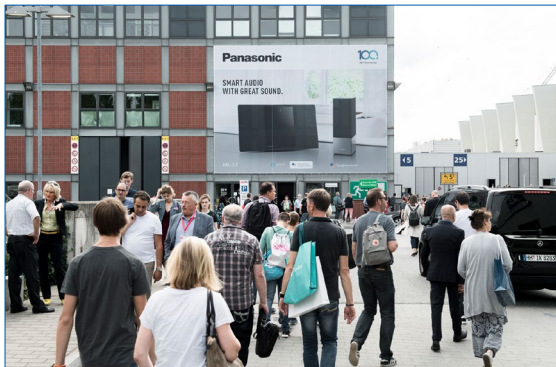
Status Availability upon request

SPECIFIC HALL AREAS – OUTDOORS



Banners at the Bridges

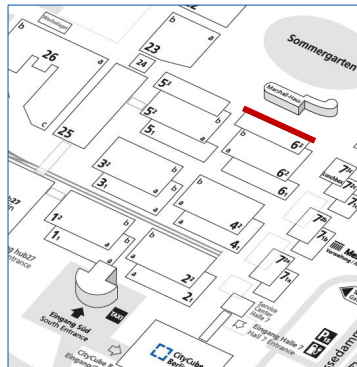
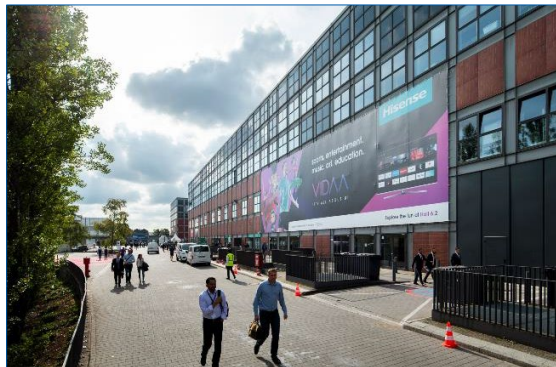
Location	up to 4 banners at the bridges between Halls 2.2/ 4.2, 3.2/ 5.2 and 4.2/ 6.2
Size (w x h)	23.50 m x 2.50 m per bridge other sizes and formats on demand
Hire Charge	13,616.00 EUR per bridge
Production/ Installation	4,610.00 EUR per bridge
Status	Availability upon request



Mega-Banners at the Facade of Hall 5.2

Location	at the facade of Hall 5.2 facing Summer Garden and Hall 25
Size (w x h)	e.g. 11.50 m x 8.50 m per banner other sizes and formats on demand
Hire Charge	e.g. 12,780.00 EUR per banner
Production/ Installation	e.g. 7,305.00 EUR per banner
Status	Availability upon request

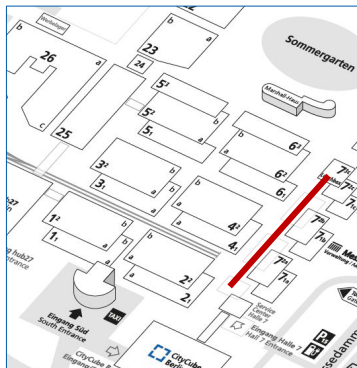
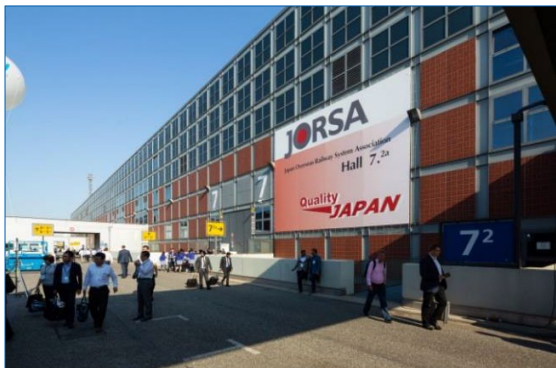
SPECIFIC HALL AREAS – OUTDOORS



Mega-Banners at the Facades of Hall 6.2

Location	at the facades of Hall 6.2 facing the Summer Garden and Hall 7.2
Size (w x h)	(1) e.g. 29.50 m x 8.50 m (2) e.g. 11.50 m x 8.50 m other sizes and formats on demand
Hire Charge	(1) e.g. 31,227.00 EUR per banner (2) e.g. 12,780.00 EUR per banner
Production/ Installation	(1) e.g. 14,895.00 EUR per banner (2) e.g. 7,305.00 EUR per banner

Status Availability upon request



Mega-Banners at the Facades of Hall 7.2

Location	at the facades of Hall 7.2 facing Halls 2.2, 4.2 and 6.2
Size (w x h)	e.g. 11.50 m x 8.50 m per banner other sizes and formats on demand
Hire Charge	e.g. 12,780.00 EUR per banner
Production/ Installation	e.g. 7,305.00 EUR per banner

Status Availability upon request

SPECIFIC HALL AREAS – OUTDOORS



Mega-Banner at the Facade of Hall 8.2

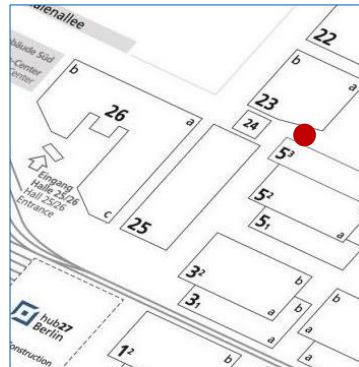
Location	at the facade of Hall 8.2 facing Summer Garden
Size (w x h)	10,20 m x 4,65 m
Hire Charge	11,718.00 EUR
Production/ Installation	2,620.00 EUR
Status	Availability upon request



Entrance Banner to the Middle Foyer of Halls 7.2c / 8.2

Location	directly above the entrance doors to the middle foyer between Halls 7.2c and 8.2 facing Summer Garden and Hall 6.2
Size (w x h)	11.50 m x 1.75 m
Hire Charge	6,790.00 EUR
Production/ Installation	1,725.00 EUR
Status	Availability upon request

SPECIFIC HALL AREAS – OUTDOORS



Mega-Banner at the Facade of Hall 23

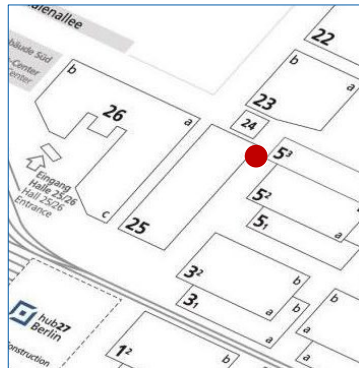
Location at the facade of Hall 23 facing Halls 5.2 and 25

Size (w x h) 26.40 m x 7.30 m

Hire Charge 32,308.00 EUR

**Production/
Installation** 7,695.00 EUR

Status Availability upon request



Mega-Banner at the Facade of Hall 25

Location at the facade of Hall 25 facing Hall 5.2 and the Summer Garden

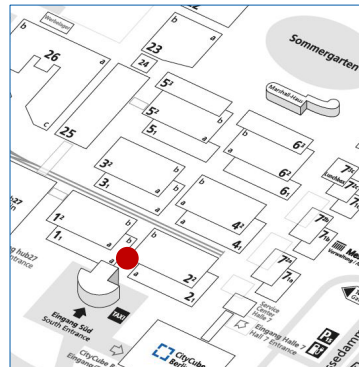
Size (w x h) 11.30 m x 11.30 m

Hire Charge 19,165.00 EUR

**Production/
Installation** 5,180.00 EUR

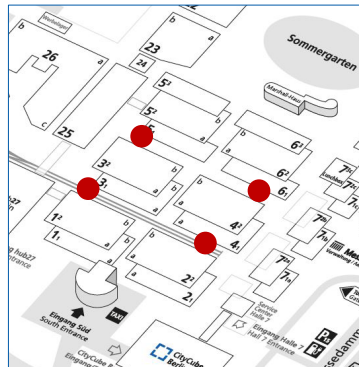
Status Availability upon request

SPECIFIC HALL AREAS – INDOORS



Banner at the Middle Foyer of Halls 1.1a/ 2.1a

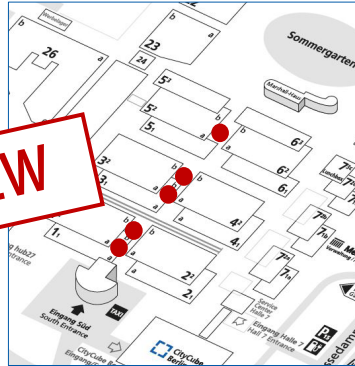
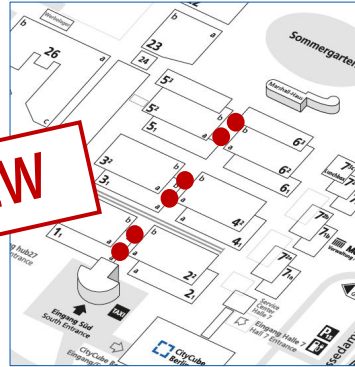
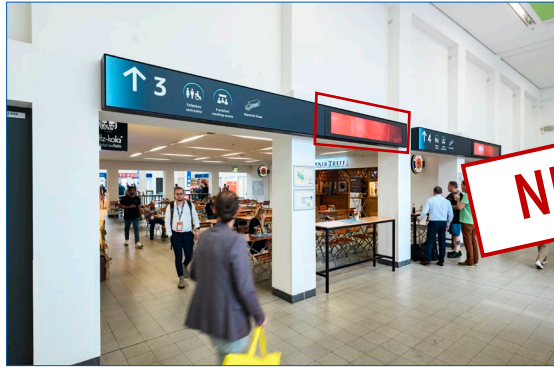
Location	directly in the middle foyer of Halls 1.1a/ 2.1a coming from the Entrance Hall South
Size (w x h)	11.49 m x 1.50 m
Hire Charge	4,448.00 EUR
Production/ Installation	2,345.00 EUR
Status	Currently reserved



Banners in the lateral Passageways of Halls 1.1 to 6.1

Location	in the passageways of Halls 1.1/ 3.1 and 2.1/ 4.1: 8 banners per passageway in the passageways of Halls 3.1/ 5.1 and 4.1/ 6.1: 6 banners per passageway
Size (w x h)	(1) 3.00 m x 3.00 m per banner (small version) (2) 5.00 m x 3.90 m per banner (big version)
Hire Charge	(1) 3,566.00 EUR per banner (small version) (2) 7,722.00 EUR per banner (big version)
Production/ Installation	(1) 610.00 EUR per banner (small version) (2) 1,180.00 EUR per banner (big version)
Status	Availability upon request

SPECIFIC HALL AREAS – INDOORS



UltraStretched Displays GUIDING SYSTEM CENTRAL

Location up to 12 displays in the middle foyers of Halls 1,2, 2,2, 3,2, 4,2 (in each case a and b) as well as 5,2 and 6,2 directly in the GUIDING SYSTEM in the walkway to the next middle foyer

Technical Specs UltraStretched Displays in the GUIDING SYSTEM CENTRAL
size: 2158 x 348mm
display 1 x 3840 x 2160 Pixel or 2 x 1920 x 1080Pixel side by side

Hire Chare on demand

Status Availability upon request

UltraStretched Displays GUIDING SYSTEM HALL ENTRANCES

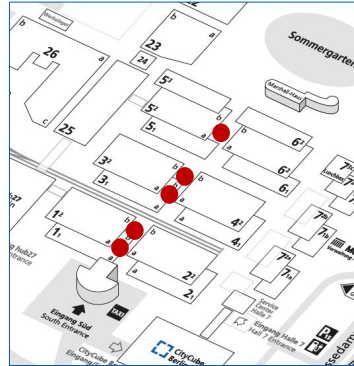
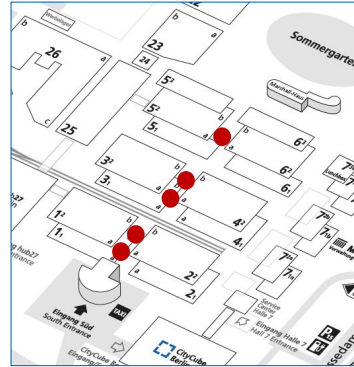
Location up to 18 displays in the middle foyers of Halls 1,2, 2,2, 3,2, 4,2 (in each case a and b) as well as 5,2a and 6,2a directly in the GUIDING SYSTEM above the entrances to the respective Halls

Technical Specs UltraStretched Displays in the GUIDING SYSTEM HALL ENTRANCES
size: 2158 x 348mm
display 1 x 3840 x 2160 Pixel or 2 x 1920 x 1080Pixel side by side

Hire Charge on demand

Status Availability upon request

SPECIFIC HALL AREAS – INDOORS



Option A: Hanging Banners in the Middle Foyers of Halls 1.2 to 6.2, 2-sided

Location in the middle foyers of Halls 1.2, 2.2, 3.2, 4.2 (in each case a and b) as well as 5.2a and 6.2a directly above the escalators and staircases

Size (w x h) 9.00 m x 3.00 m per side (2 sides par banner)

Hire Charge 15,750.00 EUR per double-sided banner

Production/Installation 2,565.00 EUR per double-sided banner

Status Availability upon request

Option B: Hanging Banners in the Middle Foyers of Halls 1.2 to 6.2, 2-sided

Location in the middle foyers of Halls 1.2, 2.2, 3.2, 4.2 (in each case a and b) as well as 5.2a and 6.2a directly above the escalators and staircases

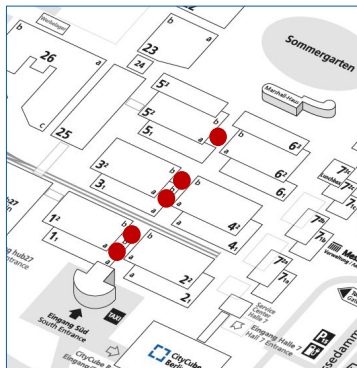
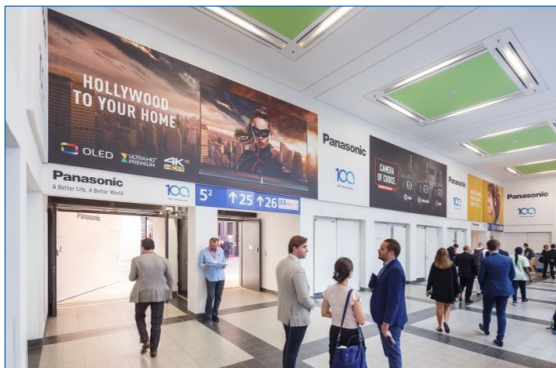
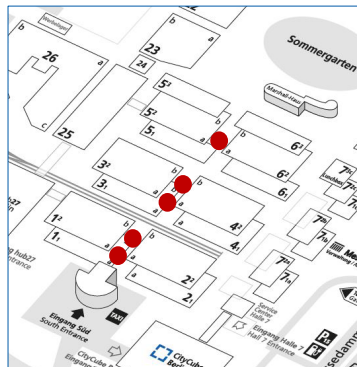
Size (w x h) 2.00 m x 3.00 m per side (2 sides per banner)

Hire Charge 4,265.00 EUR per double-sided banner

Production/Installation 405.00 EUR per double-sided banner

Status Availability upon request

SPECIFIC HALL AREAS – INDOORS



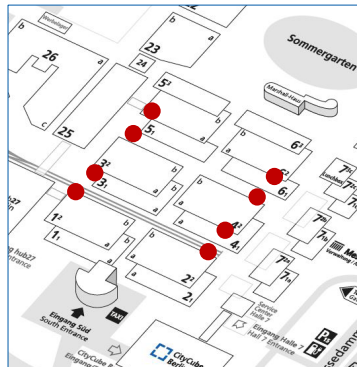
Option A: Entrance Banners in the Middle Foyers of Halls 1.2 to 6.2

Location	in the middle foyers above the entrances and passages of Halls 1.2, 2.2, 3.2, 4.2 (in each case a and b) as well as 5.2a and 6.2a
Size (w x h)	2.00 m x 2.00 m per banner
Hire Charge	1,330.00 EUR per banner
Production/ Installation	335.00 EUR per banner
Status	Availability upon request

Option B: Entrance Brandings in the Middle Foyers of Halls 1.2 to 6.2

Location	in the middle foyers above and next to the entrances of Halls 1.2, 2.2, 3.2, 4.2 (in each case a and b) as well as 5.2a and 6.2a
Size (w x h)	1 entrance branding consists of: 1 horizontal banner with 23.40 m x 2.52 m 2 lateral banners on the left and right with 2.50 m x 2.52 m each
Hire Charge	17,682.00 EUR per entrance branding
Production/ Installation	7,870.00 EUR per entrance branding
Status	Availability upon request

SPECIFIC HALL AREAS – INDOORS



Entrance Banners in the Lateral Passageways of Halls 1.2 to 6.2

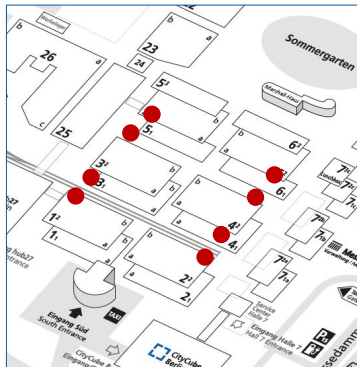
Location at the outer sides of the entrances to Halls 1.2, 2.2, 3.2, 4.2, 5.2 and 6.2 coming from the lateral passageways (see red marks on the left picture)

Size (w x h) 2.92 m x 5.00 m per banner
(4 banners per entrance)

Hire Charge 10,150.00 EUR for 4 banners (i.e. per entrance)

Production/ Installation 4,770.00 EUR for 4 banners (i.e. per entrance)

Status Availability upon request



Entrance Banners in the Lateral Passageways of Halls 1.2 to 6.2

Location on the left and right side next to the entrances to Halls 1.2, 2.2, 3.2, 4.2, 5.2 and 6.2 coming from the lateral passageways (see red marks on the left picture)

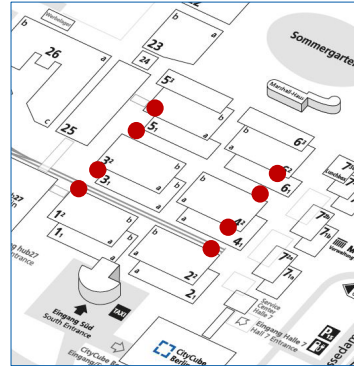
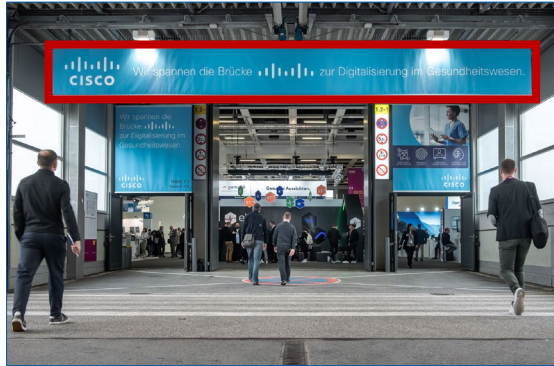
Size (w x h) 2.50 m x 2.80 m per banner
(2 banners per entrance)

Hire Charge 3,470.00 EUR for 2 banners (i.e. per entrance)

Production/ Installation 1,315.00 EUR for 2 banners (i.e. per entrance)

Status Availability upon request

SPECIFIC HALL AREAS – INDOORS



Entrance Banners in the lateral Passageways of Halls 1.2 to 6.2, 2-sided

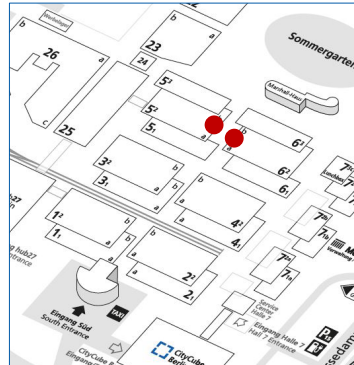
Location in front of the entrances to Halls 1.2, 2.2, 3.2, 4.2, 5.2 and 6.2 coming from the lateral passageways (see red mark on the left picture)

Size (w x h) 10.00 m x 1.00 m per side (2 sides per banner)
(1 double-sided banner per entrance)

Hire Charge 5,686.00 EUR per double-sided banner (i.e. per entrance)

Production/ Installation 2,085.00 EUR per double-sided banner (i.e. per entrance)

Status Availability upon request



Wall Brandings in the Middle Foyer of Halls 5.2b/ 6.2b

Location up to 2 wall brandings:

- 1 branding in the middle foyer between the entrance doors of Hall 5.2b
- 1 branding in the middle foyer between the entrance doors of Hall 6.2b

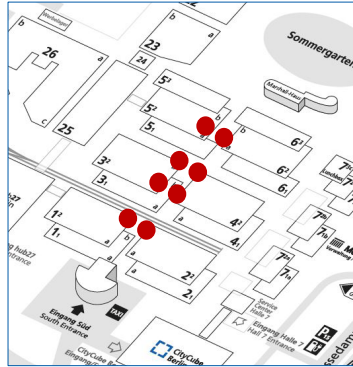
Size (w x h) 14.60 m x 2.50 m per branding

Hire Charge 9,542.00 EUR per branding

Production/ Installation 3,480.00 EUR per branding

Status Availability upon request

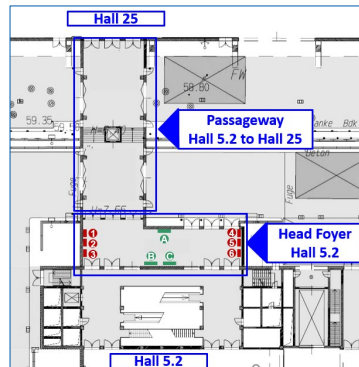
SPECIFIC HALL AREAS – INDOORS



Poster Showcases between Halls 1.2 to 6.2, unlighted

Location	Up to 8 showcases in the middle foyers of Halls 1.2 to 6.2: <ul style="list-style-type: none">• exit area middle foyer Halls 1.2/ 2.2: 2 showcases• entrance area middle foyer Halls 3.2/ 4.2: 2 showcases• exit area middle foyer Halls 3.2/ 4.2: 2 showcases• entrance area middle foyer Halls 5.2/ 6.2: 2 showcases
Size (w x h)	1.18 m x 1.75 m per poster
Hire Charge	510.00 EUR per poster
Production/ Installation	150.00 EUR per poster
Status	Availability upon request

SPECIFIC HALL AREAS – INDOORS



Lateral Banners in the Head Foyer of Hall 5.2

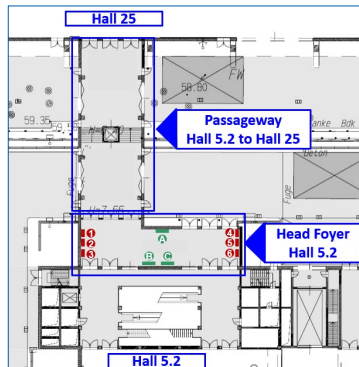
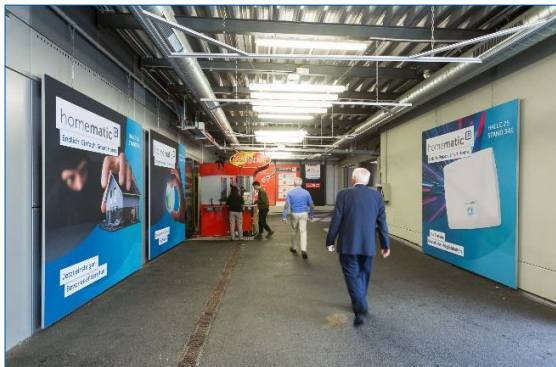
Location up to 6 banners in the head foyer of Hall 5.2 as connection to Hall 25:
3 banners at the north side and 3 banners at the south side
(see red mark on the left picture)

Size (w x h) 1.30 m x 2.30 m per banner

Hire Charge 7,075.00 EUR for all 6 banners

Production/ Installation 720.00 EUR for all 6 banners

Status Availability upon request



Lateral Banners in the Head Foyer of Hall 5.2

Location up to 3 banners in the head foyer of Hall 5.2 as connection to Hall 25:
2 banners at the east side and 1 banner at the west side

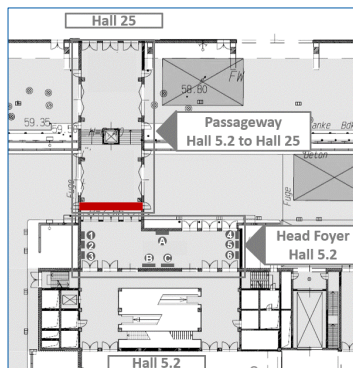
Size (w x h) 2.50 m x 2.50 m per banner

Hire Charge 5,280.00 EUR for all 3 banners

Production/ Installation 560.00 EUR for all 3 banners

Status Availability upon request

SPECIFIC HALL AREAS – INDOORS



Entrance Banner leading to Hall 5.2a

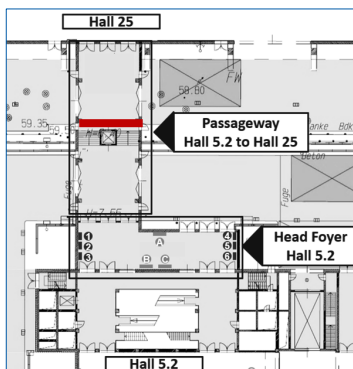
Location at the end of the passageway leading to Hall 5.2a coming from Hall 25 above the entrance to the head foyer of Hall 5.2a (see red mark on the left map)

Size (w x h) 7.80 m x 3.00 m

Hire Charge 7,430.00 EUR

Production/ Installation 1,265.00 EUR

Status Availability upon request



Passageway Banner leading to Hall 5.2a

Location in the middle of the passageway leading to Hall 5.2a coming from Hall 25

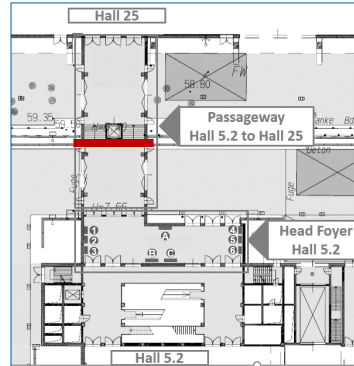
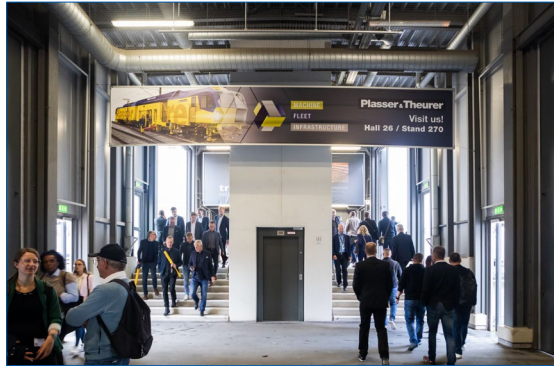
Size (w x h) 7.80 m x 2.50 m

Hire Charge 5,808.00 EUR

Production/ Installation 1,180.00 EUR

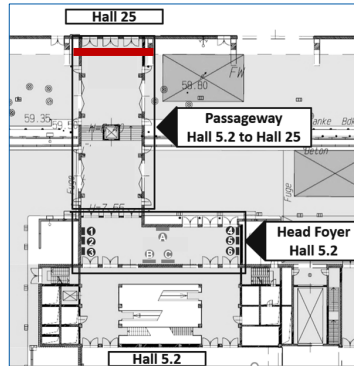
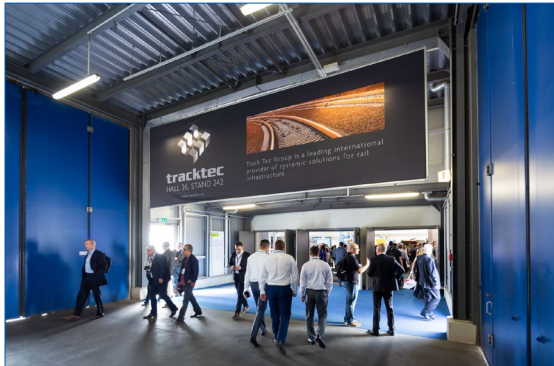
Status Availability upon request

SPECIFIC HALL AREAS – INDOORS



Passageway Banner leading to Hall 25

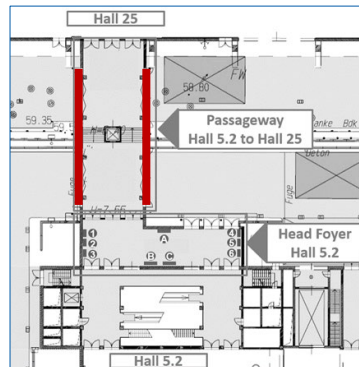
Location	in the middle of the passageway leading to Hall 25 coming from Hall 5.2a
Size (w x h)	7.80 m x 1.30 m
Hire Charge	3,026.00 EUR
Production/ Installation	925.00 EUR
Status	Currently reserved



Entrance Banner to Hall 25

Location	directly above the entrance doors to Hall 25 coming from Hall 5.2a
Size (w x h)	7.80 m x 2.50 m
Hire Charge	6,690.00 EUR
Production/ Installation	1,075.00 EUR
Status	Currently reserved

SPECIFIC HALL AREAS – INDOORS



Lateral Banners in the Passageway between Halls 5.2a and 25

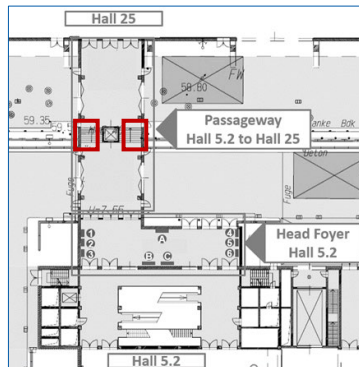
Location up to 8 banners in the passageway between Halls 5.2a and 25: north side and south side (see red marks on the left map)

Size (w x h) 4 banners: 1.30 m x 3.00 m each (2 on the right and 2 on the left)
4 banners: 1.30 m x 1.70 m each (2 on the right and 2 on the left)

Hire Charge 6,320.00 EUR for all 8 banners

Production/ Installation 955.00 EUR for all 8 banners

Status Availability upon request



Step Graphics at the Stairs in the Passageway leading to Hall 25

Location 2 stairs in the passageway leading to Hall 25 (see red marks on the left map) every step will be equipped with an adhesive foil

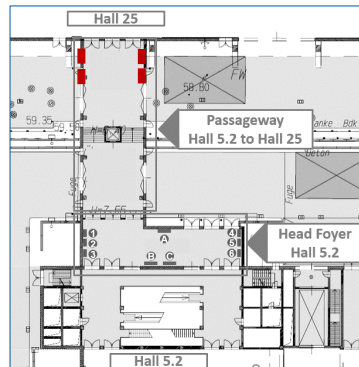
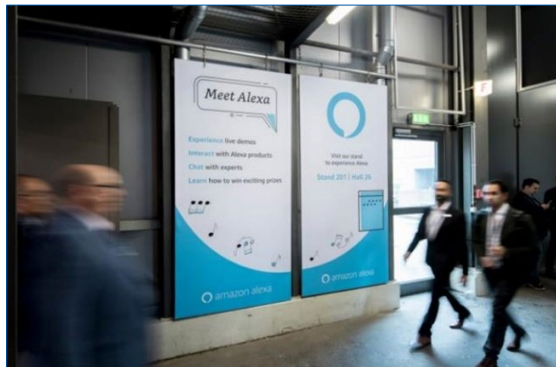
Size (w x h) 2 stairs with 8 step graphics each:
lowest steps: 3.04 m x 0.10 m each
step graphics no. 2 to 8: 3.04 m x 0.14 m each

Hire Charge 3,740.00 EUR for both stairs (i.e. 16 steps in total)

Production/ Installation 1,495.00 EUR for both stairs (i.e. 16 steps in total)

Status Availability upon request

SPECIFIC HALL AREAS – INDOORS



Entrance Banners to Hall 25

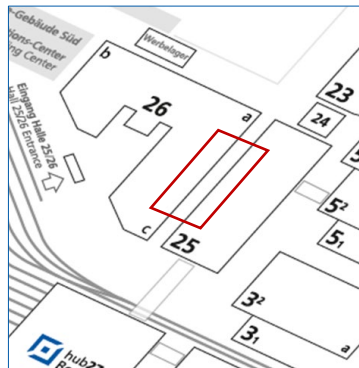
Location up to 4 banners at the entrance to Hall 25 coming from Hall 5.2a: 2 banners at the north side and 2 banners at the south side (see red marks on the left map)

Size (w x h) 1.30 m x 2.60 m per banner

Hire Charge 4,436.00 EUR for all 4 banners

Production/ Installation 505.00 EUR for all 4 banners

Status Availability upon request



Passageway and Catering Area Branding between Halls 25 and 26

Location various banners in the passageway connecting Halls 25 and 26 as well as in the catering area in this passageway (see red mark on the left map)

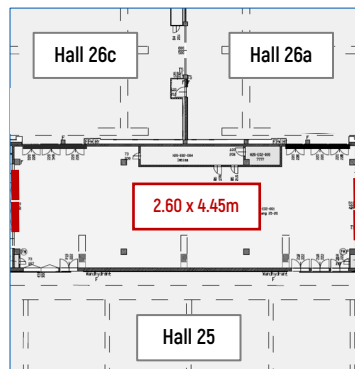
Size (w x h) 4 banners à 2.60 m x 4.45 m,
2 banners à 4.00 m x 3.50 m and
4 banners à 3.00 m x 2.00 m

Hire Charge 36,610.00 EUR for all 10 banners

Production/ Installation 5,745.00 EUR for all 10 banners

Status Availability upon request

SPECIFIC HALL AREAS – INDOORS



Passageway Banners between Halls 25 and 26

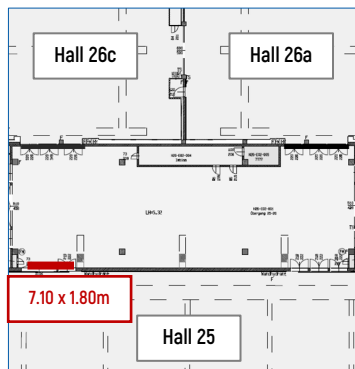
Location up to 4 banners at the sides of both passageways connecting Halls 25 and 26:
2 banners in the left passageway and 2 banners in the right passageway

Size (w x h) 2.60 m x 4.45 m per banner

Hire Charge 4,004.00 EUR per banner

Production/ Installation 675.00 EUR per banner

Status Availability upon request



Banner above the right Entrance to Hall 25

Location directly above the entrance doors to Hall 25 coming from Hall 26c
(see red mark on the left picture)

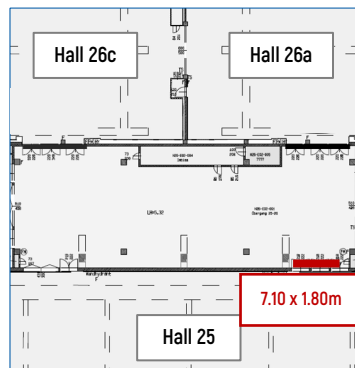
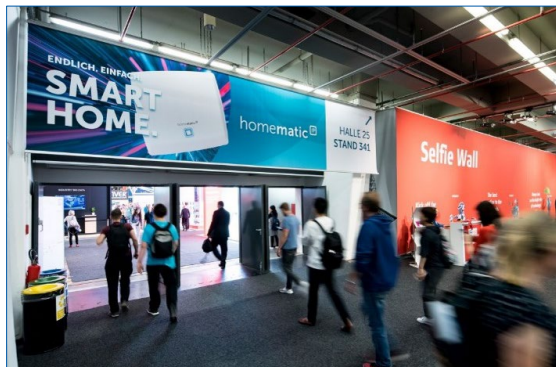
Size (w x h) 7.10 m x 1.80 m

Hire Charge 4,428.00 EUR

Production/ Installation 785.00 EUR

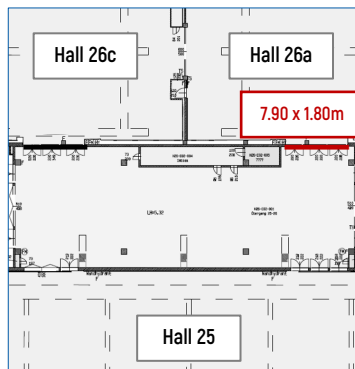
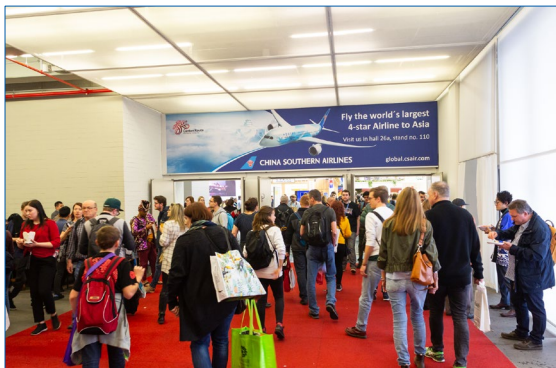
Status Availability upon request

SPECIFIC HALL AREAS – INDOORS



Banner above the left Entrance to Hall 25

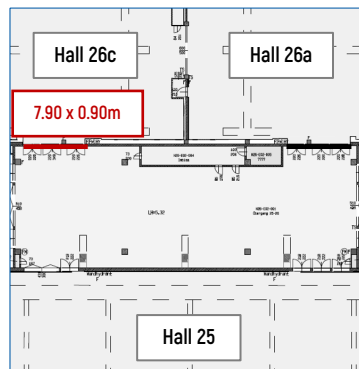
Location	directly above the entrance doors to Hall 25 coming from Hall 26a
Size (w x h)	7.10 m x 1.80 m
Hire Charge	4,428.00 EUR
Production/Installation	785.00 EUR
Status	Availability upon request



Entrance Banner to Hall 26a

Location	directly above the entrance doors to Hall 26a coming from Hall 25
Size (w x h)	7.90 m x 1.80 m
Hire Charge	4,242.00 EUR
Production/Installation	855.00 EUR
Status	Availability upon request

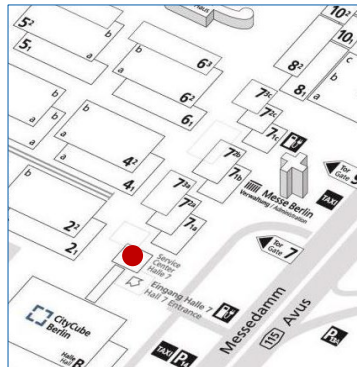
SPECIFIC HALL AREAS – INDOORS



Entrance Banner to Hall 26c

Location	directly above the entrance doors to Hall 26c coming from Hall 25
Size (w x h)	7.90 m x 0.90 m
Hire Charge	2,805.00 EUR
Production/ Installation	710.00 EUR
Status	Availability upon request

SPECIFIC HALL AREAS – INDOORS



Banner in Hall 7

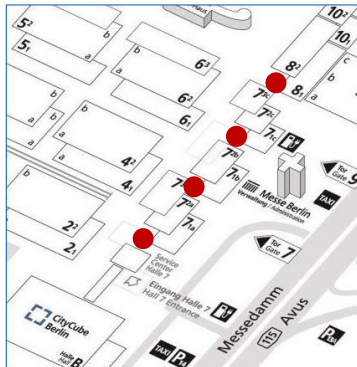
Location suspended banner directly in the entrance area of Hall 7

Size (w x h) 3.50 m x 2.50 m

Hire Charge 2,916.00 EUR

Production/ Installation 590.00 EUR

Status Currently reserved



Poster Showcases between Halls 7.2 and 8, unlighted

Location up to 15 showcases in the entrance areas and passages of Hall 7.2 and Hall 8

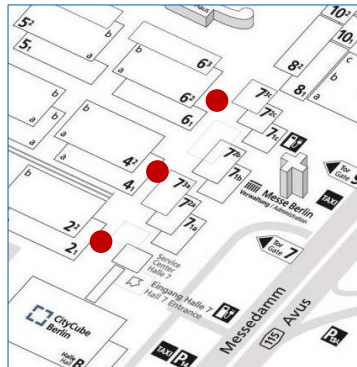
Size (w x h) 1.18 m x 1.75 m per poster

Hire Charge 510.00 EUR per poster

Production/ Installation 150.00 EUR per poster

Status Availability upon request. 3 poster showcases are currently reserved

SPECIFIC HALL AREAS – INDOORS



Passageway Banners between Halls 2.2, 4.2, 6.2 and 7.2

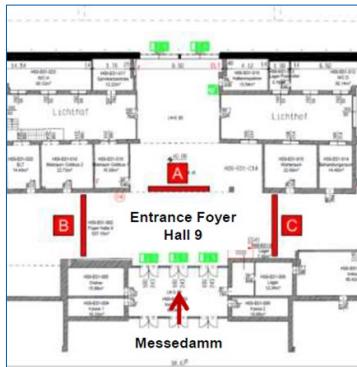
- Location**
- 4 banners in the passageway between Halls 2.2 and 7.2a
 - 4 banners in the passageway between Halls 4.2 and 7.2b
 - 4 banners in the passageway between Halls 6.2 and 7.2c

Size (w x h) 5.50 m x 1.50 m per banner (4 banners per passageway)
(2 one-sided and 2 double-sided banners)

Hire Charge 16,722.00 EUR for 4 banners, i.e. per passageway

Production/ Installation 3,312.00 EUR for 4 banners, i.e. per passageway

Status Availability upon request



Banner Frames in the Entrance Foyer of Hall 9, 2-sided

Location up to 3 banner frames in the entrance foyer of Hall 9 coming from Messedamm

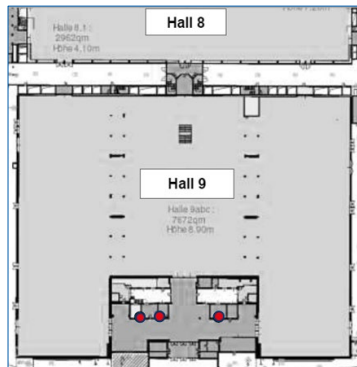
Size (w x h) 6.00 m x 1.35 m per side (2 sides per banner frame)

Hire Charge 6,274.00 EUR per doubled-sided banner frame

Production/ Installation 1,680.00 EUR per doubled-sided banner frame

Status Availability upon request

SPECIFIC HALL AREAS – INDOORS



Poster Showcases in Hall 9, illuminated

Location up to 3 showcases in the entrance area of Hall 9

Size (w x h) 1.18 m x 1.75 m per poster

Hire Charge 740.00 EUR per poster

Production/ Installation 150.00 EUR per poster

Status Availability upon request



Banner Frames between Halls 8 and 9

Location up to 9 banner frames in the entrance areas and passages of Hall 8 and Hall 9

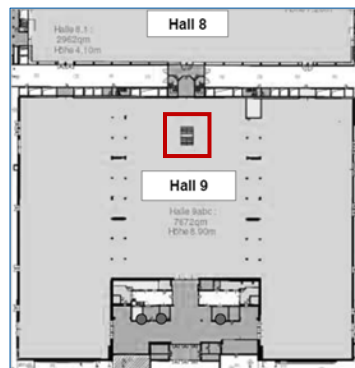
Size (w x h) 1.02 m x 2.02 m per banner frame

Hire Charge 950.00 EUR per banner frame

Production/ Installation 85.00 EUR per banner frame

Status Availability upon request

SPECIFIC HALL AREAS – INDOORS



Option A: Balustrade Branding in Hall 9, 3-sided

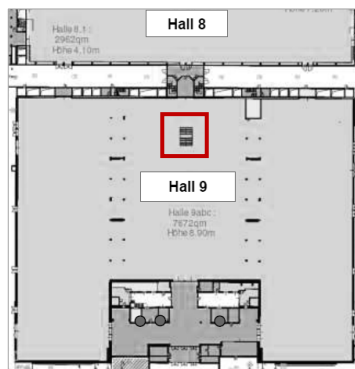
Location in Hall 9 coming from Hall 8: branding of the balustrade around the emergency exit (facing outwards - 3 sides in total)

Size (w x h) 2 spaces à approx. 6.00 m x 1.12 m
1 space approx. 4.16 m x 1.12 m

Hire Charge 6,170.00 EUR for the complete branding (i.e. for all 3 spaces)

Production/ Installation 4,010.00 EUR for the complete branding (i.e. for all 3 spaces)

Status Availability upon request



Option B: Balustrade Branding in Hall 9, 6-sided

Location in Hall 9 coming from Hall 8: branding of the balustrade around the emergency exit (facing inwards and outwards - 6 sides in total)

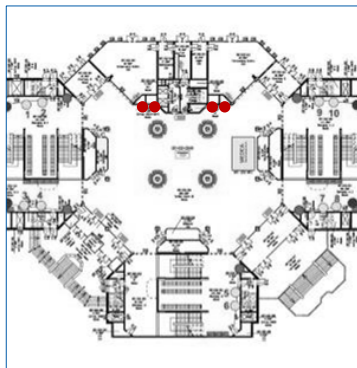
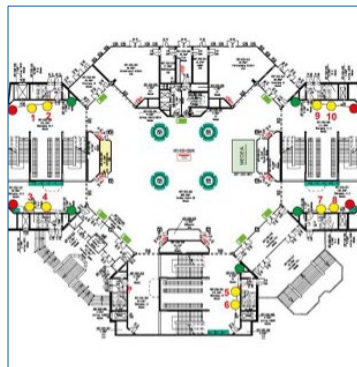
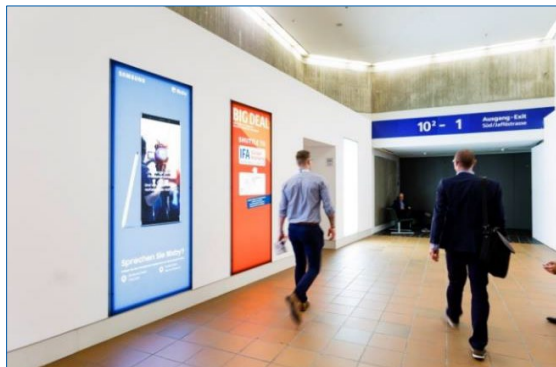
Size (w x h) 2 spaces à approx. 6.00 m x 1.12 m
2 spaces à approx. 5.90 m x 1.12 m
1 space approx. 4.16 m x 1.12 m
1 space approx. 3.96 m x 1.12 m

Hire Charge 10,115.00 EUR for the complete branding (i.e. for all 6 spaces)

Production/ Installation 6,355.00 EUR for the complete branding (i.e. for all 6 spaces)

Status Availability upon request

SPECIFIC HALL AREAS – INDOORS



Poster Frames in the Passageway Großer Stern

Location up to 10 poster frames in the passageway Großer Stern on Level 2 between Halls 10.2, 11.2 and 12
[see yellow points on the left map]

Size (w x h) 0.99 m x 2.31 m per poster

Hire Charge 825.00 EUR per poster

**Production/
Installation** 170.00 EUR per poster

Status [Availability upon request](#)

Digital Displays in the Passageway Großer Stern

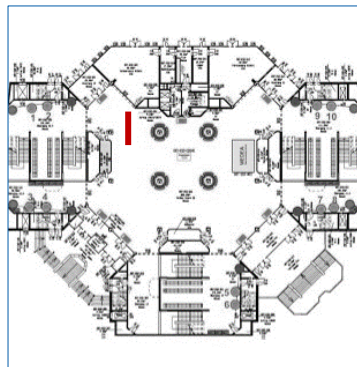
Location up to 4 digital displays in the passageway Großer Stern on Level 2 with 4 screens in total, whereof 2 screens are installed side by side

**Technical
Specs** 75" displays
picture format (w x h): 2160 pixel x 3840 pixel or 1080 pixel x 1920 pixel
file format: PNG
video format (w x h): 2160 pixel x 3840 pixel or 1080 pixel x 1920 pixel

Hire Charge 4,375.00 EUR per screen for a 30 sec spot in loop with organizer content

Status [Availability upon request](#)

SPECIFIC HALL AREAS – INDOORS



Suspended Banners in the Passageway Großer Stern, 2-sided

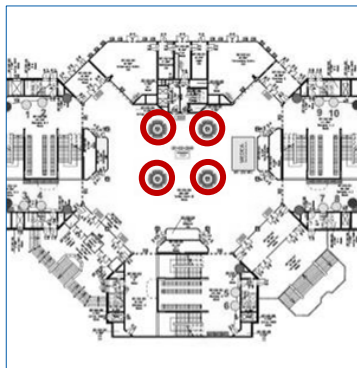
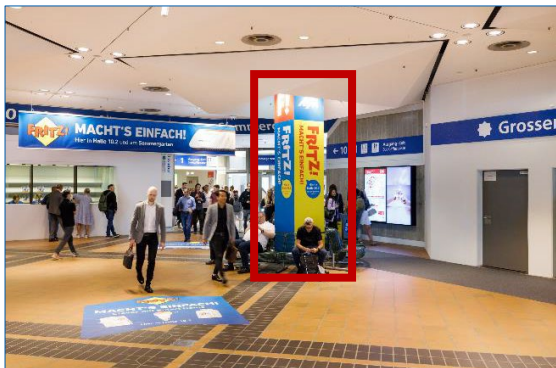
Location in the passageway Großer Stern on level 2 at the exit to Summer Garden (see red mark on the left map)

Size (w x h) 6.00 m x 0.90 m per side (2 sides per banner)

Hire Charge 4,525.00 EUR

Production/ Installation 1,090.00 EUR

Status Availability upon request



Pillar Brandings in the Passageway Großer Stern

Location Up to 4 pillar brandings in the passageway Großer Stern on Level 2 (see red marks on the left map)

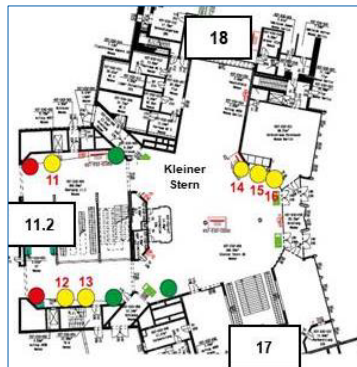
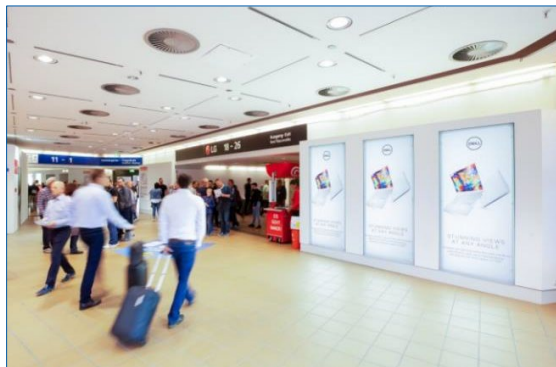
Size (w x h) 0.80 m x 4.08 m per side (4 sides per pillar)

Hire Charge 5,470.00 EUR per 4-sided pillar branding

Production/ Installation 1,935.00 EUR per 4-sided pillar branding

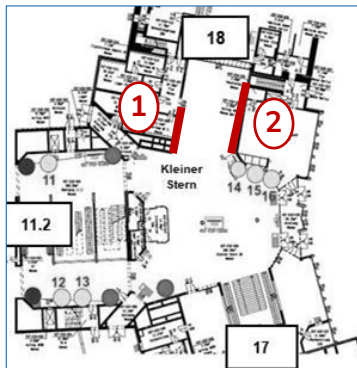
Status Availability upon request

SPECIFIC HALL AREAS – INDOORS



Poster Frames in the Passageway Kleiner Stern

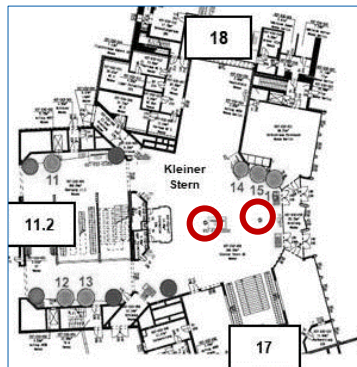
Location	up to 6 poster frames in the passageway Kleiner Stern on Level 2 between Halls 11.2, 17 and 18 [see yellow points on the left map]
Size (w x h)	0.99 m x 2.31 m per poster
Hire Charge	825.00 EUR per poster
Production/Installation	170.00 EUR per poster
Status	Availability upon request



Wall Brandings in the Passageway Kleiner Stern

Location	in the passageway Kleiner Stern on level 2 at the access to Hall 18
Size (w x h)	position 1: 6.00 m x 2.20 m position 2: 8.10 m x 2.20 m
Hire Charge	position 1: 5,570.00 EUR position 2: 7,718.00 EUR
Production/Installation	position 1: 790.00 EUR position 2: 1,065.00 EUR
Status	Availability upon request. Position 2 currently reserved

SPECIFIC HALL AREAS – INDOORS



2 Pillar Brandings in the Passageway "Kleiner Stern", each 4-sided

Location in the passageway "Kleiner Stern" on Level 2 in the passageway "Kleiner Stern" on level 2 between Halls 11.2, 17 and 18

Size (w x h) 0.65 m x 3.30 m per side
(4 sides per pillar)

Hire Charge 5,538.00 EUR for both 4-sided pillar brandings

Production/ Installation 3,220.00 EUR for both 4-sided pillar brandings

Status Availability upon request.



1 Suspended Banner in the Passageway "Kleiner Stern" and Hall 17

Location directly above the stairs and between the escalators connecting Hall 17 and the passageway "Kleiner Stern" on level 2 (see red mark in the left photo)

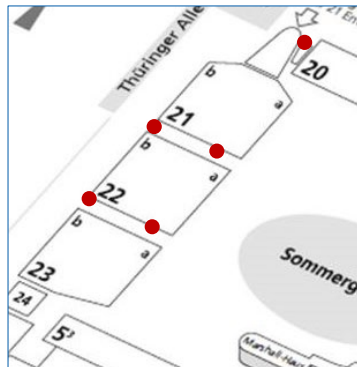
Size (w x h) 4.20 m x 1.50 m

Hire Charge 3,398.00 EUR

Production/ Installation 1,090.00 EUR

Status Availability upon request.

SPECIFIC HALL AREAS – INDOORS



Poster Galleries between Halls 20, 21, 22 and 23

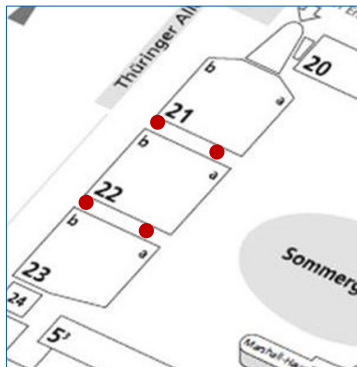
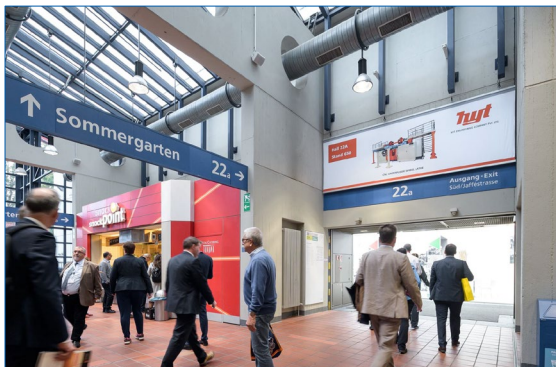
Location directly within the catering areas and passageways between Halls 20, 21, 22 and 23

Size (w x h) DIN A0 format, i.e. 0.841 m x 1.189 m per poster (up to 10 or 16 posters per area)

Hire Charge 370.00 EUR per poster

Production/ Installation 95.00 EUR per poster

Status Availability upon request.



Framed Entrance Banners Halls 21, 22 & 23

Location directly above various entrance doors to Hall 21, 22 and 23

Size (w x h) e.g. 4.75 m x 1.50 m per framed banner

Hire Charge 3,350.00 EUR per framed banner

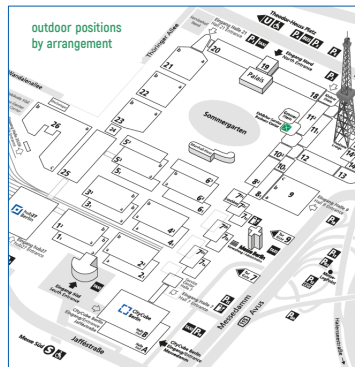
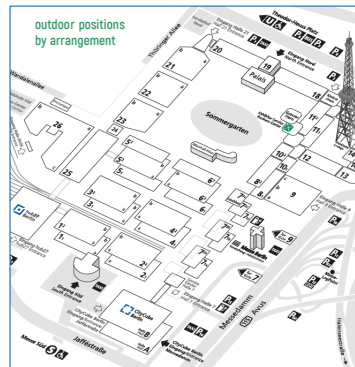
Production/ Installation 1,410.00 EUR per framed banner

Status Availability upon request. One position already reserved

ON-SITE ADVERTISING SPECIALS



SPECIALS – OUTDOORS



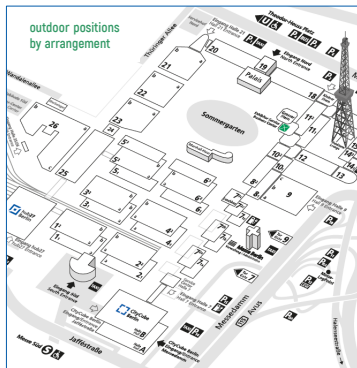
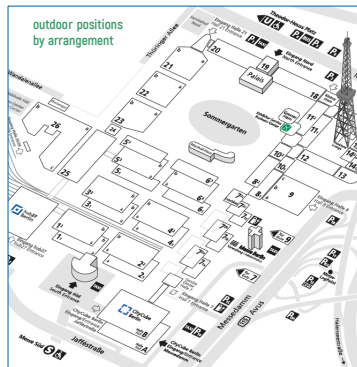
Advertising Inflatables: Balloons etc.

Location	outdoor positions by arrangement: e.g. on roofs of the halls or in the Summer Garden
Size (w x h)	e.g. 3.00 m diameter per balloon other formats, sizes and special shapes on demand
Hire Charge	e.g. 19,200.00 EUR for 1 balloon with 3.00 m diameter
Production/ Installation	on demand (depending on shape, feasibility and location)
Status	Availability upon request

Floor Graphics

Location	outdoor positions by arrangement
Size (w x h)	e.g. 2.40 m x 2.40 m per squared floor graphic other formats and shapes on demand
Hire Charge	e.g. 2,220.00 EUR per squared floor graphic
Production/ Installation	e.g. 670.00 EUR per squared floor graphic
Status	Availability upon request

SPECIALS – OUTDOORS



Full-Video AdScreen Posters, 2-sided

Location digital AdScreen posters at various outdoor locations:
outdoor positions by arrangement

Size (w x h) 3.20 m x 4.90 m per side (2 sides per screen)

Hire Charge on demand
(depending on medium and location)

Production/ Installation on demand
(depending on medium and location)

Status Availability upon request

Digital Advertising Media

Location digital advertising media such as electronic displays, LED walls etc.:
positions by arrangement

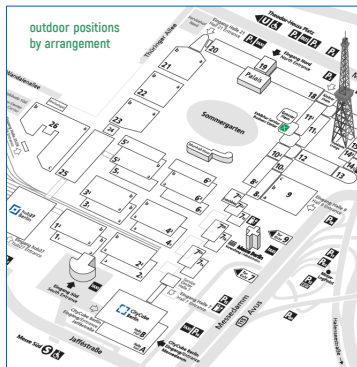
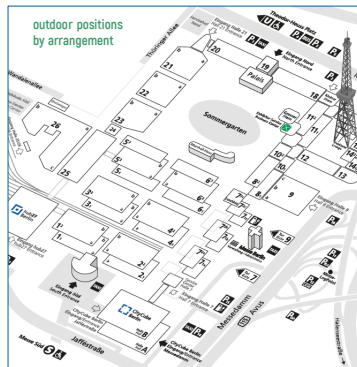
Size (w x h) to be defined

Hire Charge on demand
(depending on medium and location)

Production/ Installation on demand
(depending on medium and location)

Status Availability upon request

SPECIALS – OUTDOORS



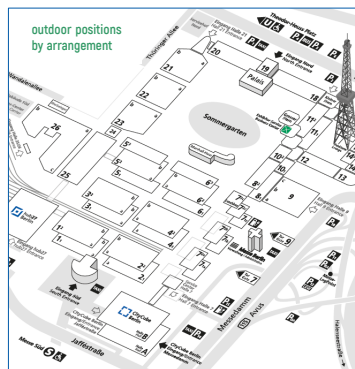
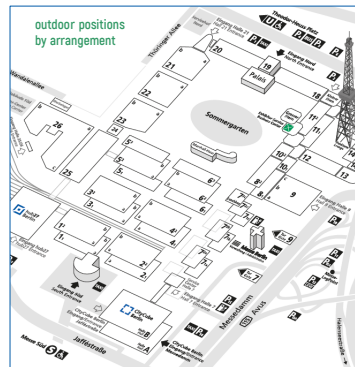
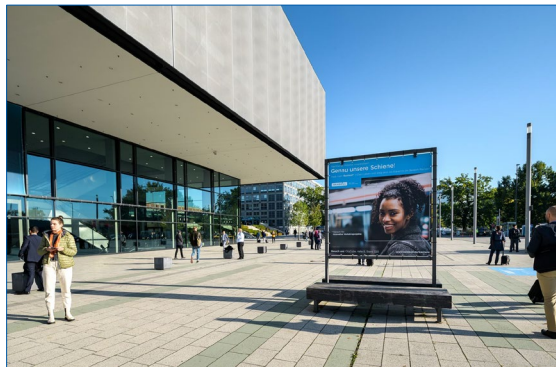
Mobile Advertising Towers, 4-sided

Location	outdoor positions by arrangement
Size (w x h)	small version: 2.302 m x 4.15 m per side (4 sides per tower) large version: 3.302 m x 6.15 m per side (4 sides per tower)
Hire Charge	small version: 11,472.00 EUR per 4-sided tower large version: 24,440.00 EUR per 4-sided tower
Production/Installation	small version: 2,970.00 EUR per 4-sided tower large version: 4,995.00 EUR per 4-sided tower
Status	Availability upon request

L-Cubes, 3-sided

Location	outdoor positions by arrangement
Size (w x h)	2 sides à 5.00 m x 7.00 m and 1 side à 7.00 m x 7.00 m
Hire Charge	50,585.00 EUR per L-Cube
Production/Installation	8,040.00 EUR per L-Cube
Status	Availability upon request

SPECIALS – OUTDOORS



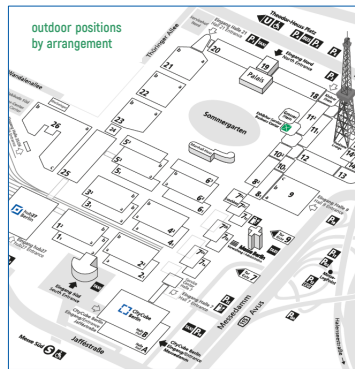
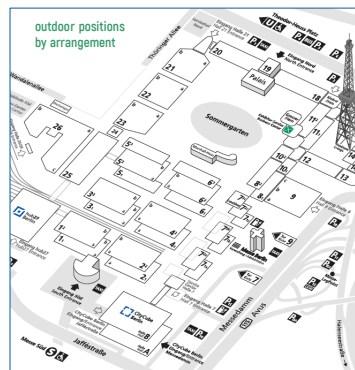
Bench Displays, 2-sided

Location	outdoor positions by arrangement
Size (w x h)	2.05 m x 2.05 m per side (2 sides per display)
Hire Charge	1,950.00 EUR per 2-sided display
Production/Installation	405.00 EUR per 2-sided display
Status	Availability upon request

Vidibox

Details	top box feature a 16m2 digital screen, bottom box can be used in various different ways such as a pop-up store or display box. The sides of both boxes can be branded
Location	outdoor position by arrangement
Size (w x h)	Vidibox size, 6.10 m x 2.50 m x 6.30 m Screen size 5.12 m x 3.04 m
Package Price	From 78,000.00 EUR per Vidibox – depending on location and branding (consisting of one bottom and one top box)
Status	Availability upon request

SPECIALS – OUTDOORS



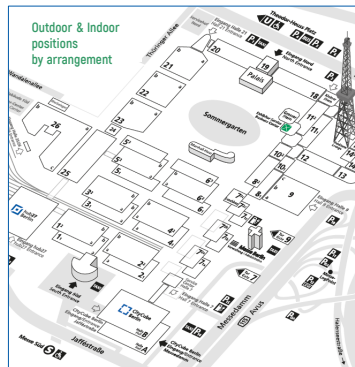
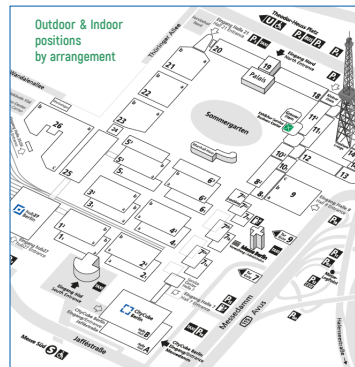
LED Sprinter

Details	sprinter van with digital screens on three sides
Location	outdoor position by arrangement
Size (w x h)	different sized screens on three sides roughly 21 square meters screen size Truck size 7,1 x 2,1 x 3,2m
Package Price	from 32,000.00 EUR depending on location
Status	Availability upon request

LED Trailer

Details	trailer with LED screen on top, the bottom trailer can be branded with adhesive foil for an additional charge
Location	outdoor position by arrangement
Size (w x h)	from 6.00 x 3.50 m screen size
Package Price	from 34,000.00 EUR depending on location and branding
Status	Availability upon request

SPECIALS – OUTDOORS & INDOORS



CityBreeze

Details

75" digital screen, 1-sided, backside is covered in a layer of moss; the screen actively cleans and cools ambient air while storing CO₂,

Location

outdoor & indoor position by arrangement

Size (w x h)

total size depending on base and individual installation choices

Package Price

from 19,000.00 EUR per CityBreeze

Status

Availability upon request

LED Cube

Details

LED Cube, 4-sided

Location

outdoor & indoor position by arrangement

Size (w x h)

3.00 m x 2.50 m per side - indoor version
5.00 m x 3.50 m per side - outdoor version

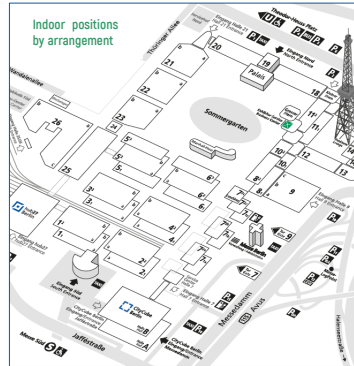
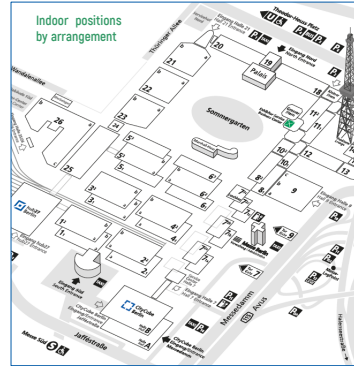
Package Price

from 58,000.00 EUR indoor version
from 68,000.00 EUR outdoor version

Status

Availability upon request

SPECIALS – INDOORS



Floor Graphics and Carpet Brandings

Location	indoor positions by arrangement: e.g. in entrance areas, at passageways and within middle foyers
Size (w x h)	(1) e.g. 1.00 m x 1.00 m per squared floor graphic (2) e.g. 2.00 m x 2.00 m per squared floor graphic other sizes, special formats and carpet brandings on demand
Hire Charge	(1) e.g. 398.00 EUR per squared floor graphic (2) e.g. 1,030.00 EUR per squared floor graphic
Production/ Installation	(1) e.g. 105.00 EUR per squared floor graphic (2) e.g. 335.00 EUR per squared floor graphic

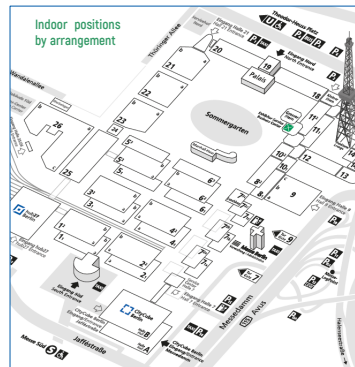
Status Availability upon request

Step Graphics at Stairs

Location	indoor positions by arrangement: e.g. in the middle foyers
Size (w x h)	to be defined
Hire Charge	on demand (depending on location, quantity and format)
Production/ Installation	on demand (depending on location, quantity and format)

Status Availability upon request

SPECIALS – INDOORS



Branding of Pillars, 4-sided

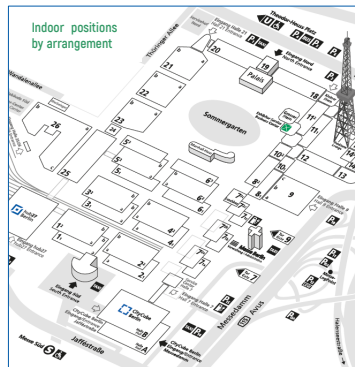
Location in middle foyers and catering areas of Halls 1.1 to 6.1 and Halls 1.2 to 6.2 as well as in the entrance areas

Size (w x h) approx. 0.60 m x 2.50 m per side (4 sides per pillar)

Hire Charge 1,976.00 EUR per 4-sided pillar branding

Production/ Installation 1,140.00 EUR per 4-sided pillar branding

Status Availability upon request



Banner Frames, 1- or 2-sided

Location indoor positions by arrangement: e.g. in the middle foyers as well as in the entrance areas

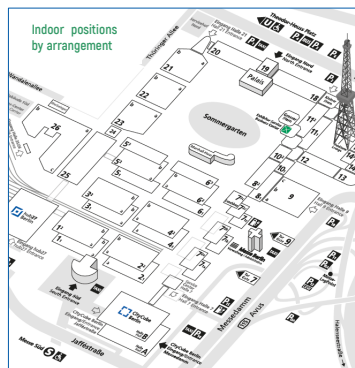
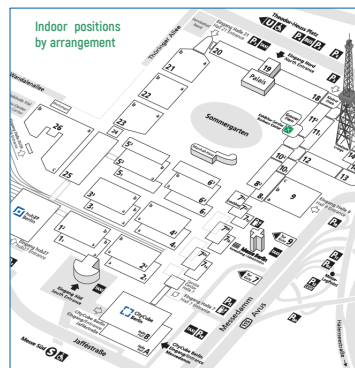
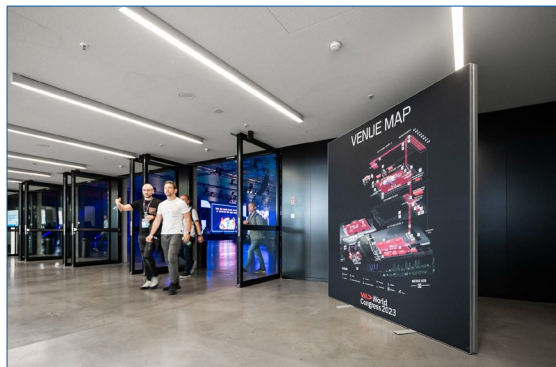
Size (w x h) e.g. 1.00 m x 2.00 m per side
other sizes on demand

Hire Charge e.g. 1,500.00 EUR per 2-sided display

Production/ Installation e.g. 365.00 EUR per 2-sided display

Status Availability upon request

SPECIALS – INDOORS



PILA Frames, 1-sided

Location	indoor positions by arrangement: e.g. in the middle foyers as well as in the entrance areas
Size (w x h)	(1) e.g. 2.28 m x 2.28 m per banner (see picture on the left) (2) e.g. 6.00 m x 2.00 m per banner other sizes on demand
Hire Charge	(1) e.g. 1,950.00 EUR (2) e.g. 4,510.00 EUR
Production/Installation	(1) e.g. 530.00 EUR (2) e.g. 695.00 EUR

Status Availability upon request

Advertising Banner Frames in the Middle Foyers

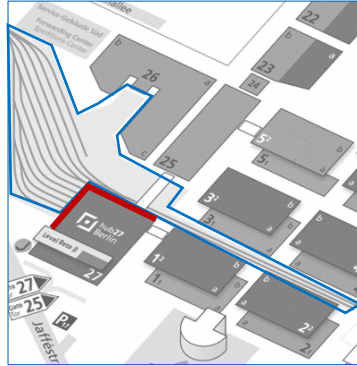
Location	indoor positions by arrangement: e.g. in the middle foyers of Halls 1.1 to 6.1 as well as in the middle foyers of Halls 1.2 to 6.2
Size (w x h)	2.485 m x 2.485 m per banner frame
Hire Charge	1,775.00 EUR per banner frame
Production/Installation	530.00 EUR per banner frame

Status Availability upon request

ON-SITE ADVERTISING OUTDOOR DISPLAY



OUTDOOR DISPLAYS



Mega-Banners on the Facade of hub27 facing the Outdoor Display

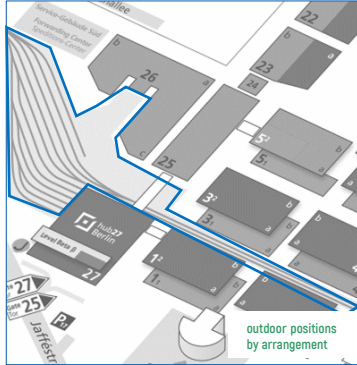
Location on the north facade in the direction of Hall 25 and on the east facade in the direction of the track area (see red marks on the left map)

Size (w x h) e.g. 14.60 m x 6.70 m banner
other sizes, positions and formats on demand

Hire Charge e.g. 19,610.00 EUR per banner

Production/Installation e.g. 5,320.00 EUR per banner

Status Currently reserved



Mobile Flagpoles next to the Exhibits

Location mobile flagpoles: outdoor positions by arrangement

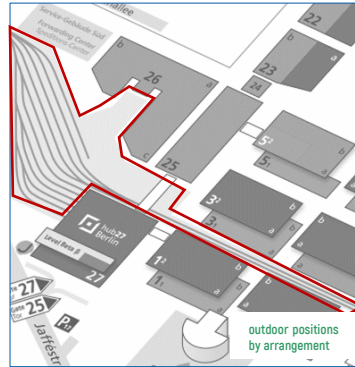
Size (w x h) 1.50 m x 4.00 m per flag
approx. 6.50 m height per pole

Hire Charge 1,290.00 EUR per flagpole

Production/Installation on demand
[depending on layout, position, quantity and finishing]

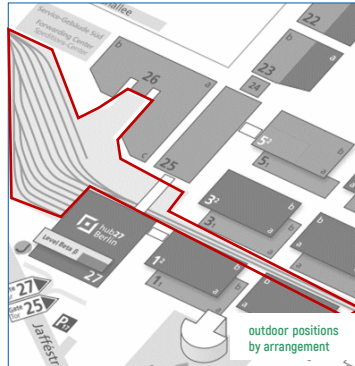
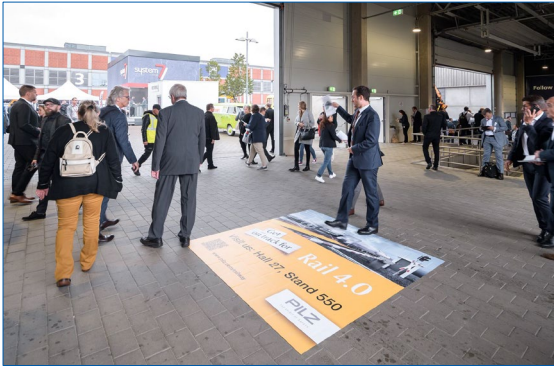
Status Availability upon request

OUTDOOR DISPLAYS



Balloons on/at the Trains

Location	exact outdoor positions by arrangement
Size (w x h)	e.g. 3.00 m diameter per balloon other formats, sizes and special shapes on demand
Hire Charge	e.g. 19,200.00 EUR for 1 balloon with 3.00 m diameter
Production/ Installation	on demand (depending on shape, feasibility and location)
Status	Availability upon request



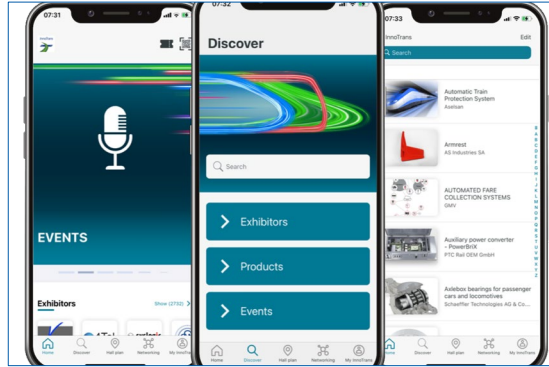
Floor Graphics

Location	outdoor positions by arrangement
Size (w x h)	e.g. 2.40 m x 2.40 m per squared floor graphic other formats and shapes on demand
Hire Charge	e.g. 2,220.00 EUR per squared floor graphic
Production/ Installation	e.g. 670.00 EUR per squared floor graphic
Status	Availability upon request

ONLINE ADVERTISING



ONLINE ADVERTISING



InnoTrans Online

Description

For many years now, InnoTrans has been offering its exhibitors the opportunity to digitally extend their on-site trade fair participation beyond the duration of the exhibition with the Media Package.

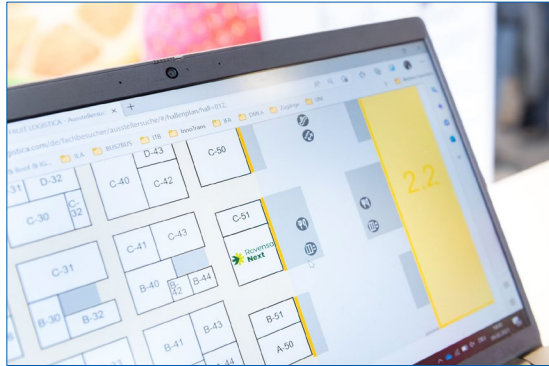
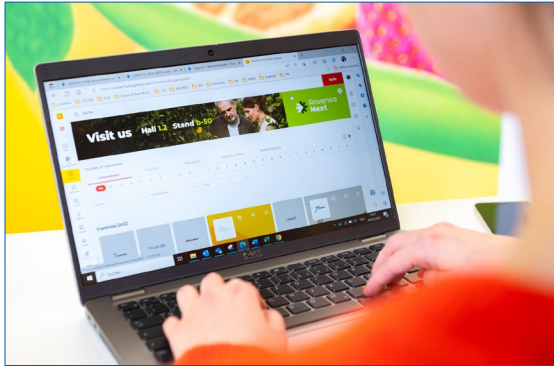
This digital presence is strengthened with the **InnoTrans Online Platform** with interactivity and networking.

In addition to exhibitor and product presentations with a modern look and feel, both exhibitors and trade visitors now have extensive opportunities to select potential business partners in preparation for their visit to the trade fair, arrange appointments with them in advance or conduct an initial meeting via chat or video calls.

Boost your visibility before, during and after the trade show and put your company in the spotlight by placing eye-catching online advertising in 3 channels:

- on the **InnoTrans Website**
- on the new digital industry platform **InnoTrans Online**
- in the **InnoTrans App**

A detailed overview of all opportunities and benefits will be gladly provided anytime.



OUT-OF-HOME ADVERTISING



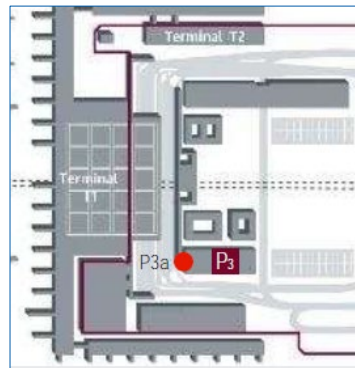
BERLIN CITY/TRAFFIC



Taxi Brandings all over Berlin

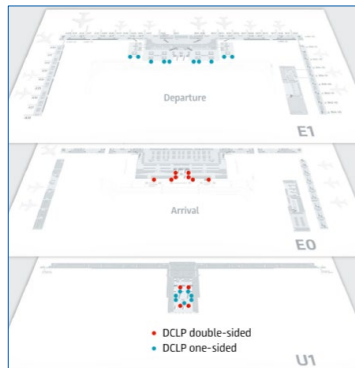
Description	Branding of between 5 - 300 taxis which will be used all over the city, can be booked for 14 days or 1 month time period
Package Price	e.g. (1) 12,650.00 EUR for 50 taxi brandings over 2 weeks e.g. (2) 17,600.00 EUR for 50 taxi branding over 4 weeks e.g. (3) 23,650.00 EUR for 100 taxi brandings over 2 weeks e.g. (4) 31,350.00 EUR for 100 taxi brandings over 4 weeks other amounts and booking periods on demand
Status	Availability upon request

AIRPORT "BER" – OUTDOORS & INDOORS



Giant Poster at the Access and Exit Road

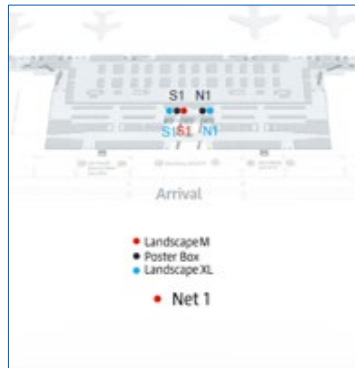
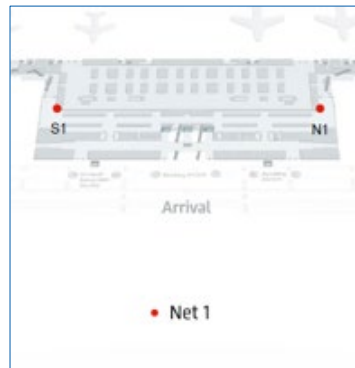
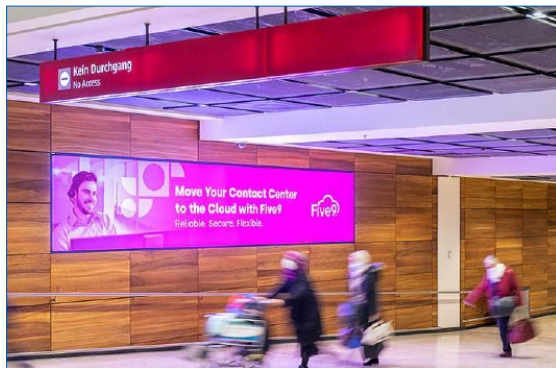
Location	successful meeting. With this giant poster on car park P3 you'll be visible from the drop-off/pick-up zone and check-in and will address both departing and arriving passengers and their meeters and greeters >> Terminal 1 access and exit road , parking garage P3, outdoor area
Target Group	arriving and departing passengers, Meeters & Greeters
Size (w x h)	visible size: approx. 18.80 m x 10.95 m
Hire Charge	on demand
Production/Installation	on demand
Status	Availability upon request



Digital City Light Posters

Location	up tp 29 Digital City Light Posters in the net, single and double-sided, indoors and outdoors. Terminal 1, Level 1, O & U1, Arrival / Departure, outdoor area
Target Group	arriving and departing passengers, Meeters & Greeters
Dimensions and baseline data	75 / 85-Zoll, 9:16, number of spaces / screens: 29 / 41 thereof 17 single-sided (see blue marks on the map) and 12 double-sided screens (see red marks on the map) number of slots: 6 slots à 10 sec. / min. 1 week minimum booking period: 1 slot à 10 sec. / min. 1 week
Hire Charge	on demand
Status	Availability upon request

AIRPORT "BER" – INDOORS



Landscapes "L" at Arrival Gangway North and South

Location land customers with attention grabbers. You want maximum attention for your products? We'll get you there! Using the L landscapes in the north and south gangways to baggage reclaim readily get noticed by arriving Schengen and non Schengen passengers >> Terminal 1, arrival gangway, security area

Target Group arriving passengers in Terminal 1
Size (w x h) production size / visible size: 6.21 m x 1.255 m / 6.19 m x 1.235 m
 maximum available spaces: 2 (1 net)

Hire Charge on demand

Production/ Installation on demand

Status Availability upon request

Landscapes "M & XL" and 2 Poster Boxes Lost & Found

Location an intelligent luggage net. Get your offer deftly across on five sites in the passageway between the baggage reclaim areas. Catch their attention as they make their way to their bags >> Terminal 1, arrival gangway, baggage claim, security area

Target Group arriving passengers in Terminal 1

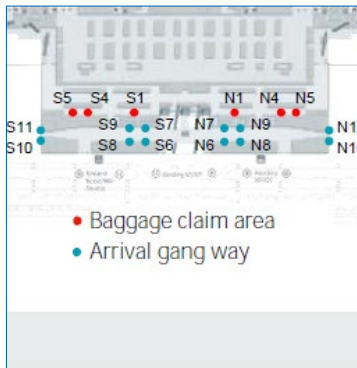
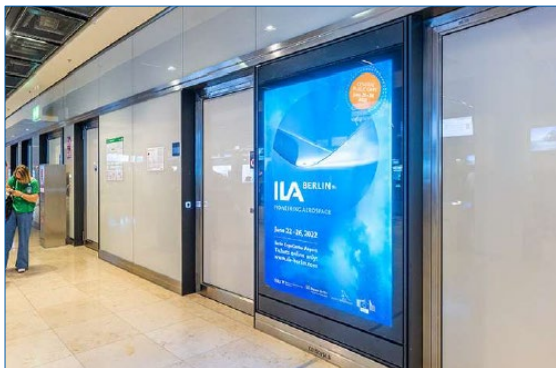
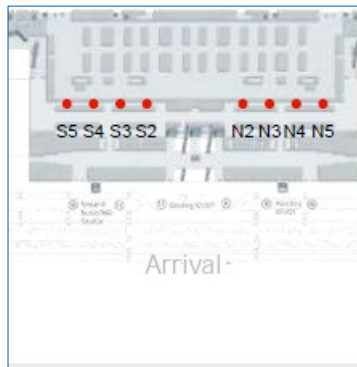
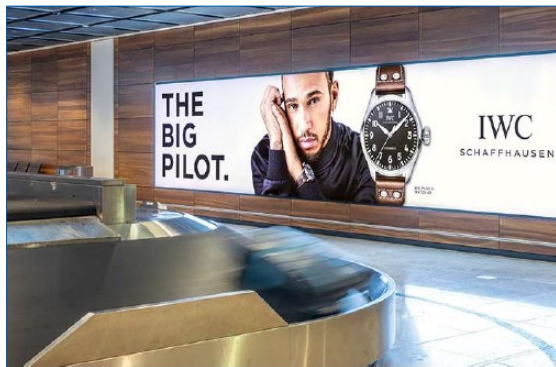
Size (w x h) production size / visible size:
 3.71 m x 1.91 m / 3.69 m x 1.89 m per Landscape M
 8.71 m x 1.91 m / 8.69 m x 1.89 m per Landscape XL
 1.21 m x 1.91 m / 1.19 m x 1.89 m per Poster Box
 maximum available spaces: 5 (1 net)

Hire Charge on demand

Production/ Installation on demand

Status Availability upon request

AIRPORT "BER" – INDOORS



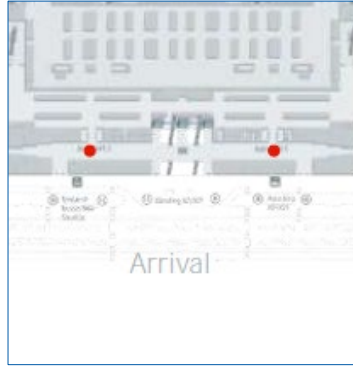
Landscape XL Baggage Claim Area

Location	your bag of tricks in Berlin. Always have a good idea with you in your luggage? Make the most of yourself on eight landscapes along the baggage carousels XL effects guaranteed! >> Terminal 1, arrival gangway, baggage claim, security area
Target Group	arriving passengers in Terminal 1
Size (w x h)	production size / visible size: 8.71 m x 1.91 m / 8.69 m x 1.89 m maximum available spaces: 8
Hire Charge	on demand
Production/ Installation	on demand
Status	Availability upon request

Poster Display Case Arrival

Location	a net of posters. Arriving passengers will be unable to ignore them; 18 poster display cases in the baggage reclaim area or pick-up area are single or in a net bookable. With backlighting for greater appeal >> Terminal 1, arrival, baggage claim & arrival gang way, security area & public area
Target Group	arriving passengers in Terminal
Size (w x h)	production size / visible size: 1.18 m x 1.745 m / 1.15 m x 1.71 m maximum available spaces: 18
Hire Charge	on demand
Production/ Installation	on demand
Status	Availability upon request

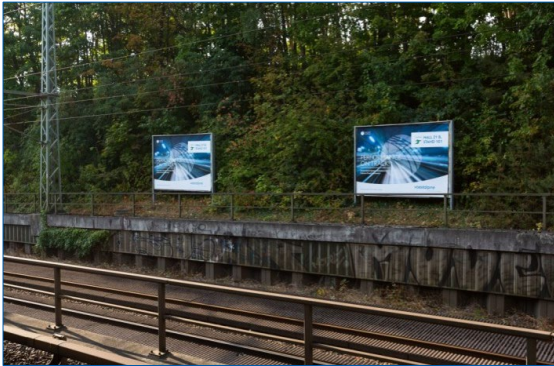
AIRPORT "BER"– INDOORS



Monitor Bridges

Location	hello in Berlin! These backlit areas are located directly opposite the two exits from the baggage claim area. As stand-alone areas they are a real eye-catcher and the first advertising media in the public area >> Terminal 1, arrivals, pick-up area, public area
Target Group	arriving passengers in Terminal 1
Size (w x h)	production size / visible size: 2.530 m x 1.435 m/ 2.520 m x 1.425 m (incl. edges) maximum available spaces: 2
Hire Charge	on demand
Production/ Installation Status	on demand Availability upon request

PUBLIC TRANSPORT “MESSE SÜD”



Ground Posters / Floor Graphics

Description positions by arrangement directly on the platform and in the entrance / exit areas of the station, minimum booking period: 1 week

Size (w x h) 1.20 m x 1.80 m per graphic

Hire Charge on demand

Production/Installation on demand

Status **Availability upon request**

Billboards at the Station, unlighted

Description up to 2 billboards directly at the station, minimum booking period: 10 days

Size (w x h) approx. 3.56 m x 2.52 m per billboard (18/1)

Hire Charge on demand

Production/Installation on demand

Status **Availability upon request**

GET IN TOUCH WITH OUR EXPERIENCED MARKETING TEAM...

Emily Frieden

Junior Marketing Manager

Luis Humpert

Junior Marketing Manager

Tuba Ipek

Senior Marketing Manager

Lilith Strebl-Schneider

Marketing Director

Gudrun Mehlhase

Senior Marketing Manager

Kristina Bendler

Senior Marketing Manager

Leopold Benecke

Junior Marketing Manager

GIVE US A CALL OR WRITE US AN E-MAIL:

PHONE: +49(0)30 3038-2525

E-MAIL: ADVERTISING@MESSE-BERLIN.DE

LET'S BOOST YOUR VISIBILITY BEYOND YOUR BOOTH AND EXPLORE THE FUTURE OF MOBILITY!

Important note on prices:

All indicated prices plus Value Added Tax. Subject to change. Subject to confirmation. The indicated prices apply to the period of the exhibition. Prices for production and installation are subject to fluctuations due to the dynamic price development of some materials used and can thus only be offered without obligation. Agency commissions will not be accorded. Prices do not include graphic design/layout.